

WMC Corp

# PARCEL MAP NO. 3621

EDEN TOWNSHIP, ALAMEDA COUNTY, CALIFORNIA

JUNE 1981

SCALE 1" = 100'

KIRKPATRICK ASSOCIATES  
EL SOBRANTE, CALIFORNIA

**★ USE WITH CAUTION ★**  
THIS IS A PUBLIC WORKS DEPARTMENT  
WORKING COPY OF AN OFFICIAL MAP  
ON FILE IN THE OFFICE OF THE COUNTY  
RECORDER, COUNTY OF ALAMEDA. OF-  
FICE INFORMATION OR CALCULATIONS  
MAY HAVE BEEN ADDED HEREON.

NOTE: PURSUANT TO SECTION 66499.20 1/2 OF THE  
SUBDIVISION MAP ACT, THE PURPOSE OF THIS MAP IS TO  
MERGE THE LANDS AND ABANDON THE PUBLIC EASEMENTS  
SHOWN ON TRACT 2396 WITH THE EXCEPTION OF THE  
STORM DRAIN EASEMENT SHOWN HEREON.

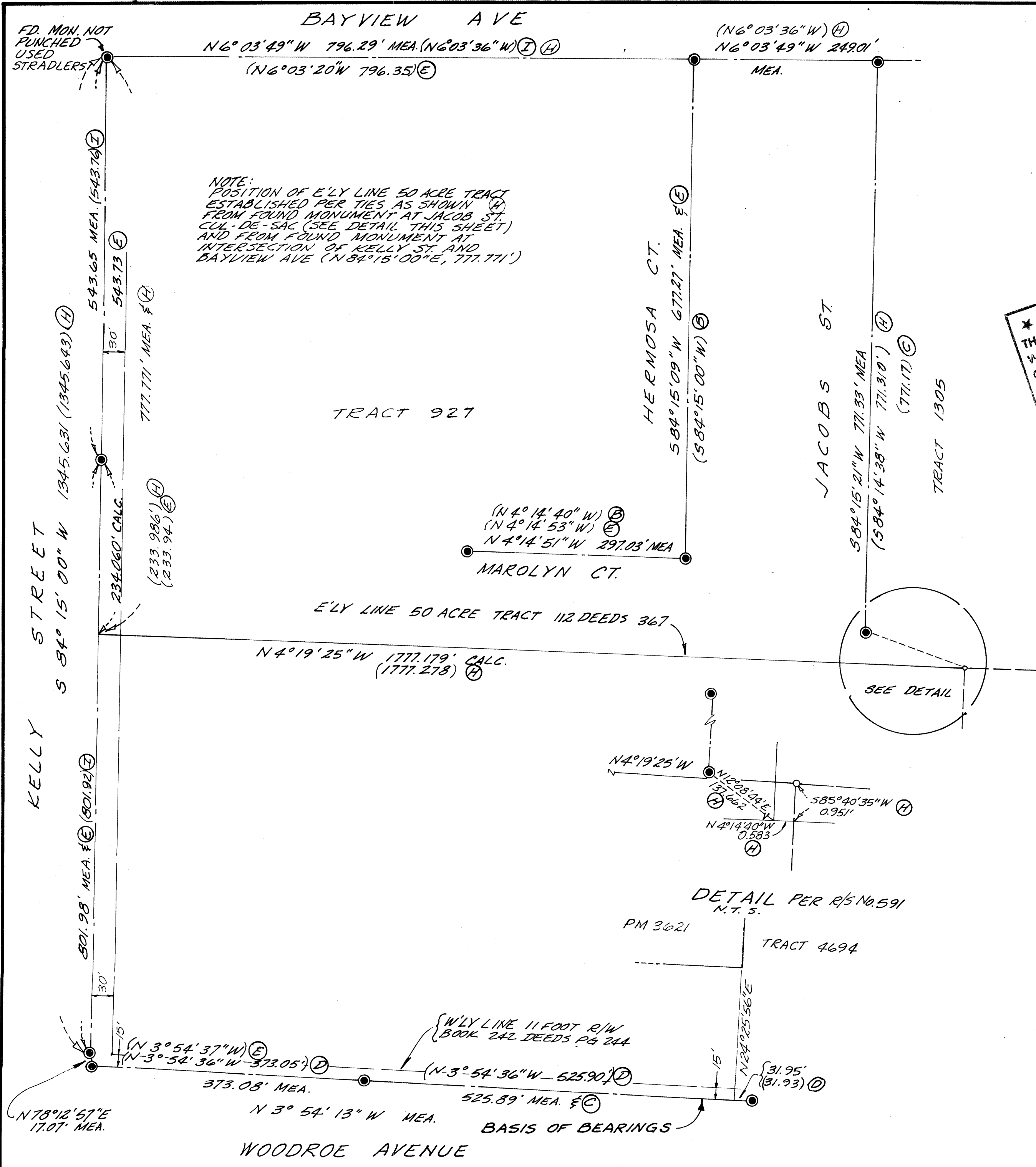
BASIS OF BEARING: MONUMENT LINE ON WOODROE  
AVENUE TAKEN AS N 3° 54' 13" W

## LEGEND

- FOUND, ALA. CO. STD. CONC. MON.
- TO BE SET, ALA. CO. STD. CONC. MON.
- FOUND IRON PIPE AS NOTED
- SET, 3/4" IRON PIPE, RCE 18500
- SET, NAIL & TAG RCE 18500
- RECORD DISCREPANCY WITH FIELD
- EXTERIOR BOUNDARY LINE

## REFERENCE DATA

- (A) TRACT 2396, 46 M17
- (B) AMENDED MAP TRACT 927, 21 M4
- (C) PM 1056, 84 PM 56
- (D) TRACT 4694, 134 M 21
- (E) PM 1141, 79 PM 96
- (F) PM 854, 76 PM 33
- (G) RE 198 IM 338, AR 129122, RE 280 IM 290, AS 28872
- (H) RECORD OF SURVEY NO. 591, 11 RS 17
- (I) PM 3266, 121 PM 66



83-099778

SHEET 3 OF 3

filed 6-9-83

130/51

138/5