

This tutorial is written by Denise D. on 14th January, 2020
from my own ideas.

Any resemblance to other tutorials is co-incidental and unintentional.
If you wish to share my Tutorials, you **MUST** obtain my permission first.
All I ask is that you advise me and credit for the tutorial is given to me and
linked to

<http://escapingtosp2.altervista.org/Home/homeb.html>

Please do not upload any of my completed Tutorial images onto sites
such as Fotki, Pinterest, Photobucket or similar

PEACOCK FEATHERS





Thank you Inge-Lore for this German Translation



Thank you Marion for this French Translation



Click on the Box to download Supplies

Supplies

Images:

Thank you Lori Rhae for your peacock image

<https://groups.google.com/forum/#!forum/treschicboutique>

017_(FloralVase).png

Feather Swirls.jpg

PeacockScroll.png

Some of these image were obtained from the Internet

If you are the owner of this image, please contact me
so that credit can be given to you

Textures:

texture.117.jpg

Selections:

D.D.PeacockFeathers

D.D.PeacockFeathers1

D.D.PeacockFeathers2

D.D.PeacockFeathers3

D.D.PeacockFeathers4

Signature

Plugins:

AAA Frames

Simple
Alien Skin Eye Candy 5.0/Impact
AP Innovations 01
LOtis Filters

You can download this filter from here:

<https://app.box.com/s/kmfz4is4p0gzovzwng7navmi3dovfeiq>

Found here:



Notes:

This Tutorial was created in Corel 2020.... **other versions may need adjustment**

Some of the graphics may be from Free to Use sites or Share Groups.

If you are the creator of one of these please let me know so that appropriate credit can be given.

No infringement of copyright is intended or intentional.

Before opening PSP, download plugins and install

**Please Note: Offset settings provided in this tutorial may vary according to size of your image.
Please adjust to suit.**

The settings remain the same throughout this Tutorial unless otherwise stated.

Set your Foreground colour to #7f7cc1

Set your Background colour to #153565

Step One:

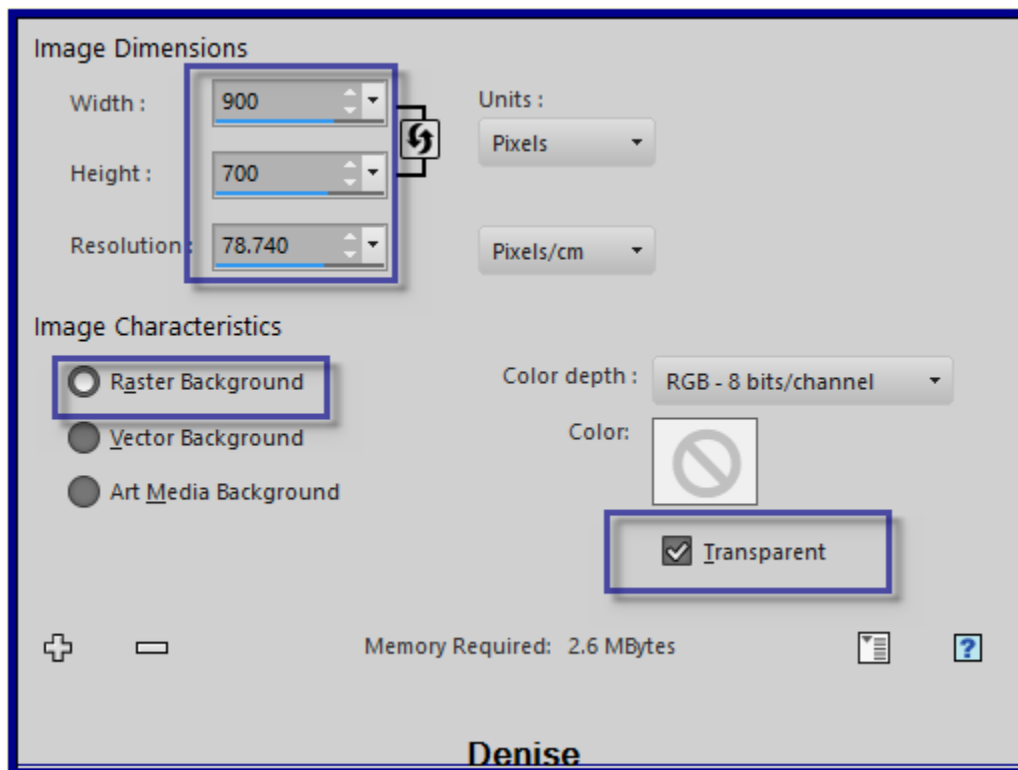
Place Texture in PSP Texture Folder

Place Selections in PSP Selection Folder

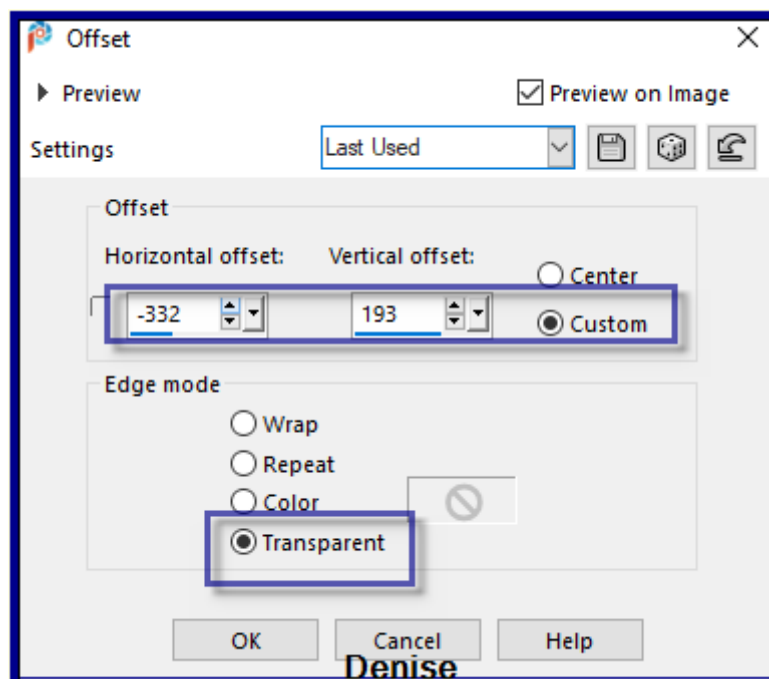
Open graphics in PSP, duplicate (Shift D) and close the original.

You need to supply your own Peacock image for this Tutorial

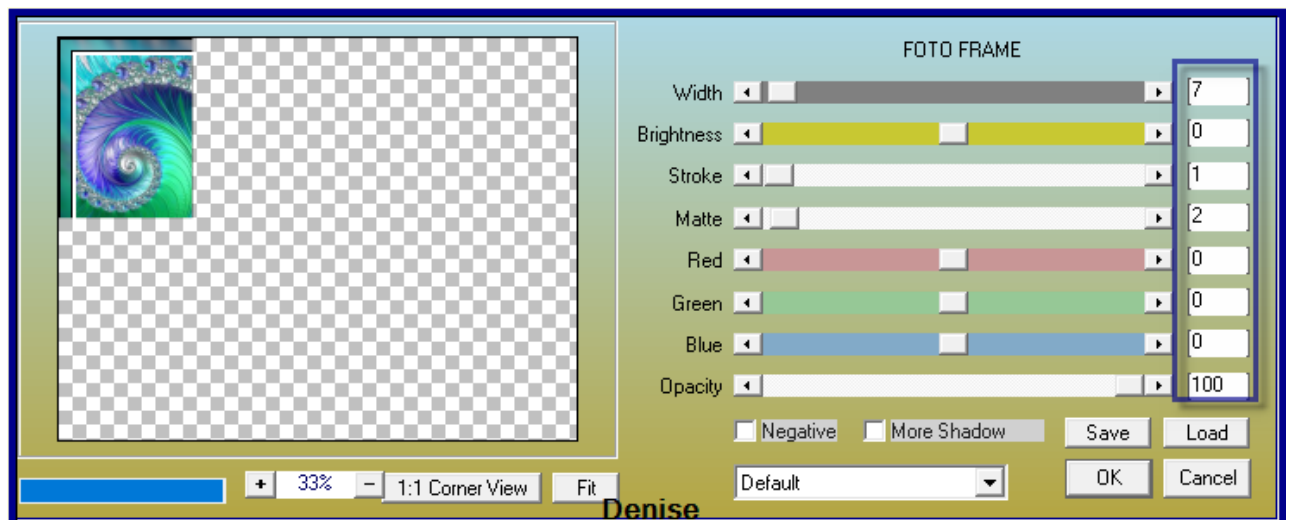
File/New/New Image 900 pixels x 700 pixels as follows:



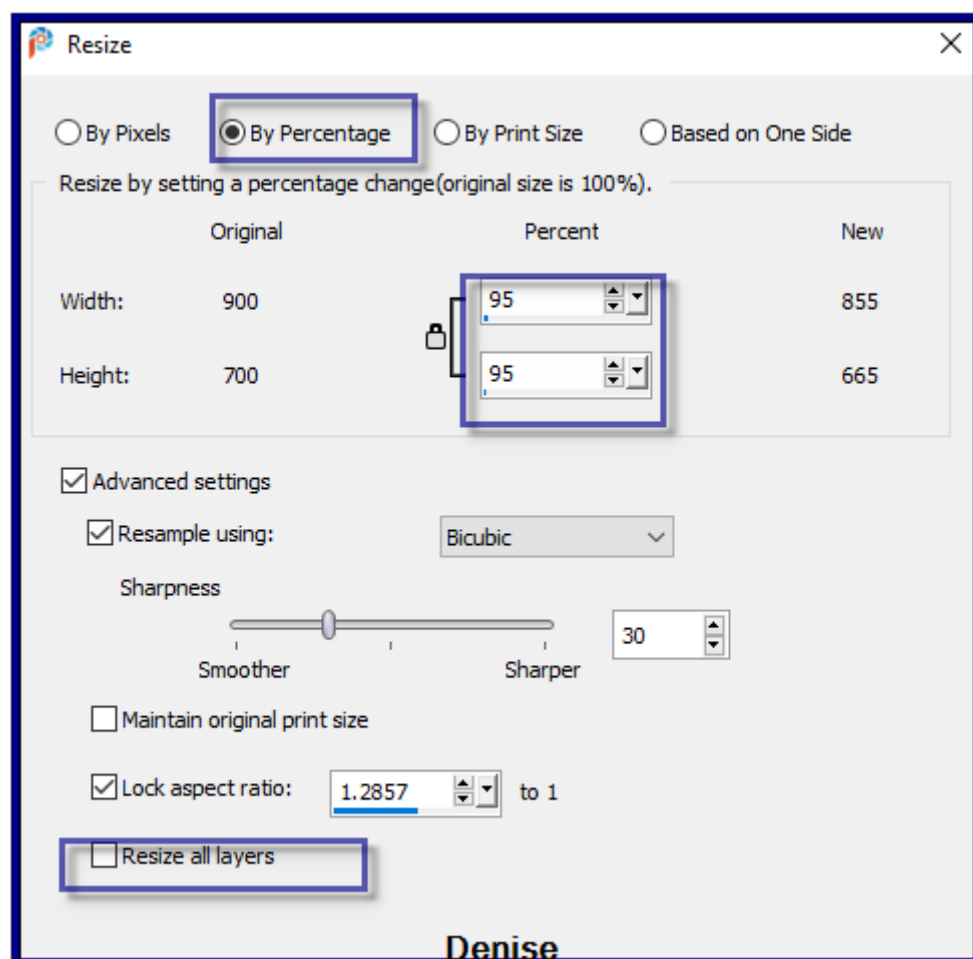
Maximise FeatherSwirls.jpg
 Edit/Copy Edit/Paste as New Layer
 Effects/Image Effects/Offset as follows:



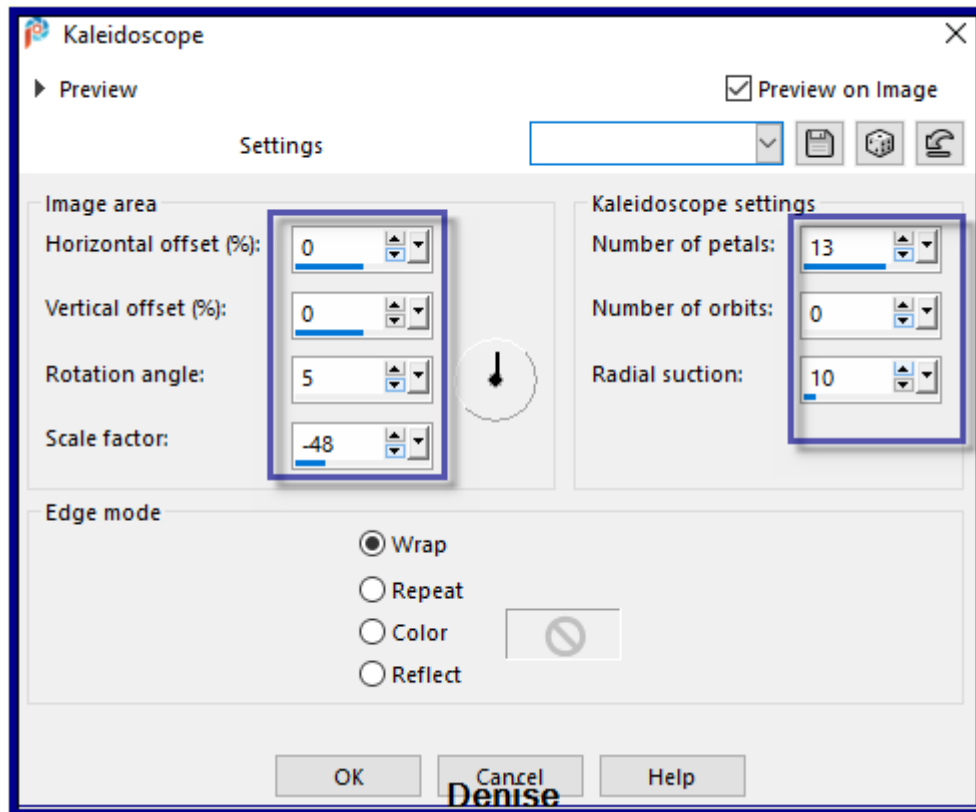
Step Two:
 Effects/Plugins/AAA Frames/Foto Frames as follows:



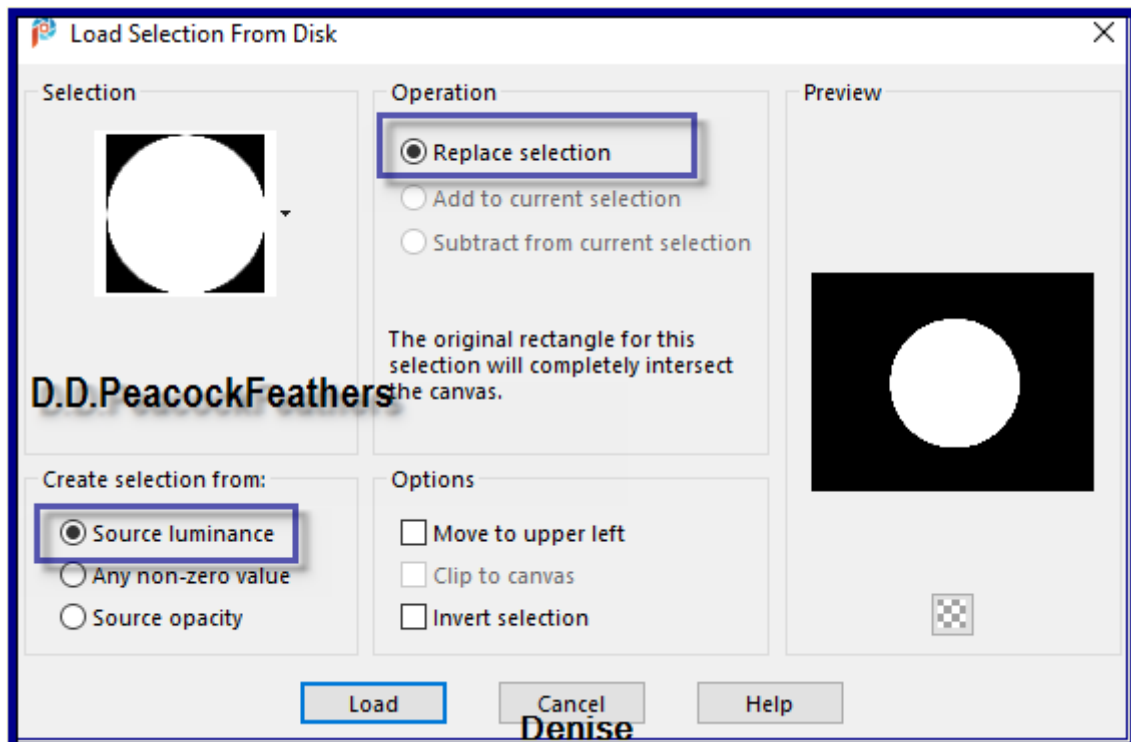
Effects/Plugins/Simple/Top Left Mirror
 Layers/Duplicate
 Image/Resize/95% as follows:



Step Three:
 Layers/Duplicate
 Effects/Reflection Effects/Kaleidoscope as follows:



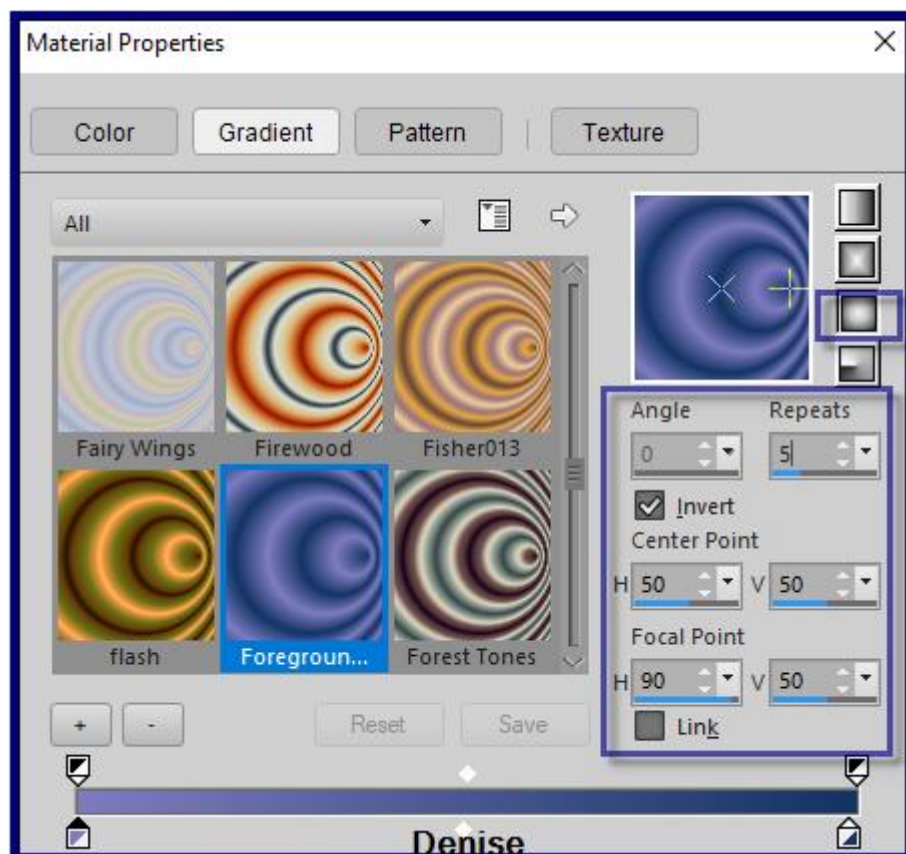
Adjust/Sharpness/Sharpen
 Selections/Load/Save Selection/Load Selection D.D.PeacockFeathers from
 Disk as follows:



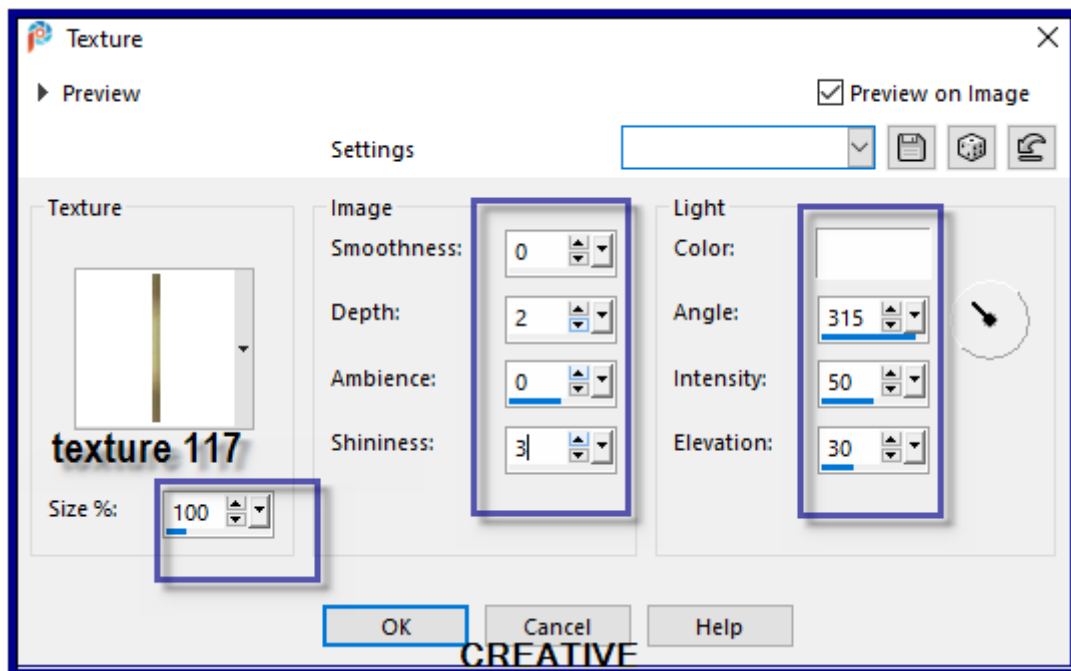
Edit/Cut Edit/Paste as a New Image
Minimise for now
Selection/Select None

Step Four:

Selection/Load/Save Selection/Load Selection D.D.PeacockFeathers1 from Disk
Edit/Clear
Selections/Select None
Select Copy of Raster 2
Selections/Load/Save Selection/Load Selection D.D.PeacockFeathers2 from Disk
Edit/Clear
Selections/Select None
Layers/New Raster Layer
Layers/Arrange/Send to Bottom
Change Foreground Colour to Foreground/Background/Sunburst Gradient as follows:



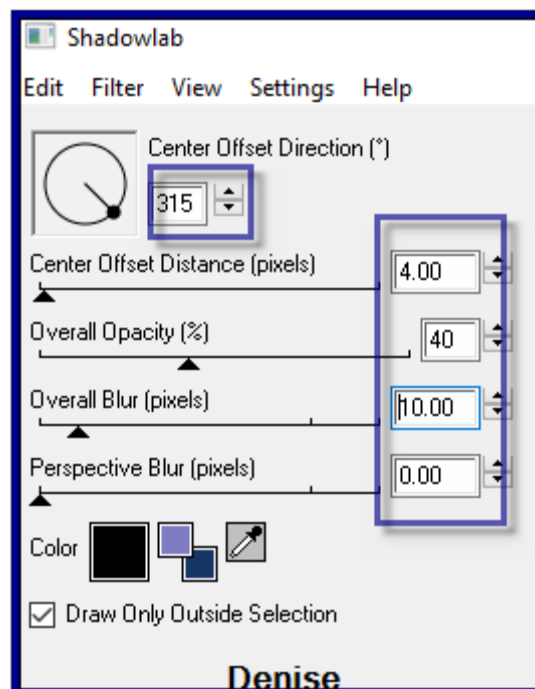
Flood fill with Gradient
Effects/Texture Effects/Texture/texture117.jpg as follows:



Adjust/Sharpness/Sharpen

Step Five:

Select Copy of Raster 2
Effects/Plugins/Eye Candy 4000/Shadowlab as follows:



Repeat Shadowlab/Direction 135
Select Copy (2) of Raster 2 Layer
Effects/Plugins/Eye Candy 5.0/Impact/Glass/Clear

Step Six:

Selections/Load/Save Selection/Load Selection D.D.PeacockFeathers3
from Disk

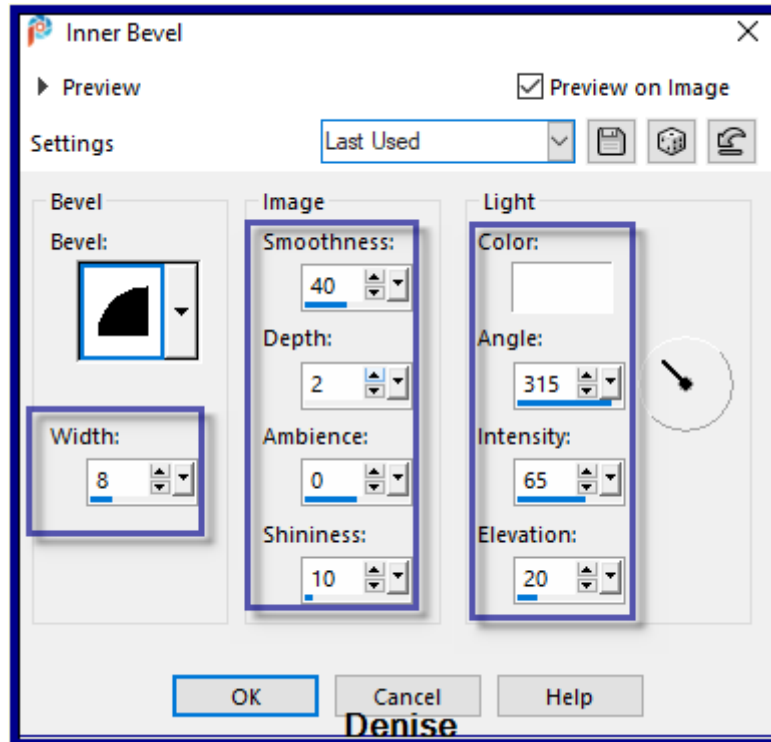
Layers/New Raster Layer

Maximise FeathersSwirl.jpg

Edit/Copy Edit/Paste into Selection

Selections/Select None

Effects/3D Effects/Inner Bevel as follows:



Effects/Plugins/Eye Candy 4000/Shadowlab

Effects/Plugins/Alien Skin Eye Candy 5/Impact/Glass/Clear

Layers/Duplicate

Image/Mirror/Horizontal OR Image/Mirror

Layers/Merge/Merge Down

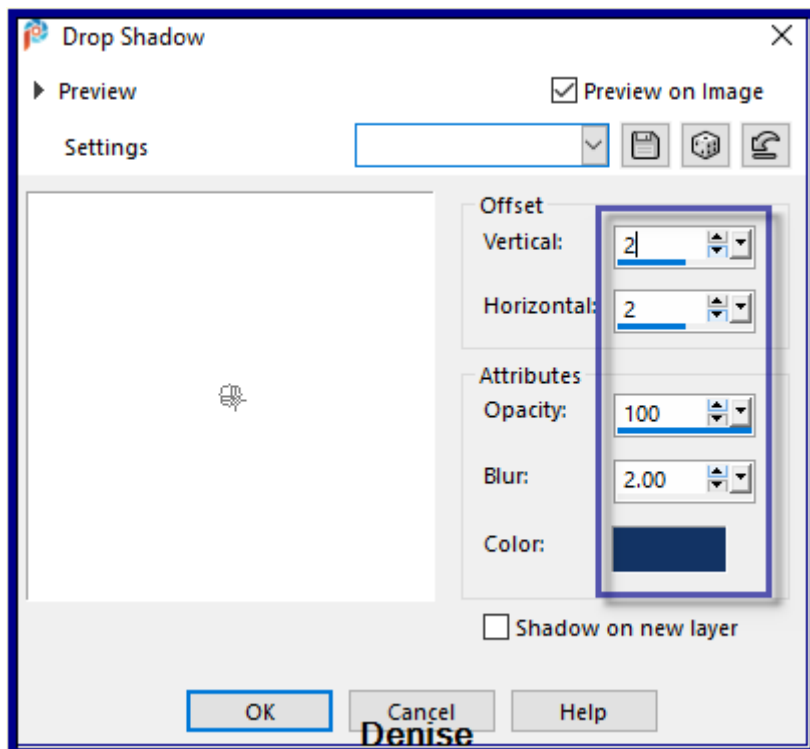
Step Seven:

Maximise 017_(FloralVase).png

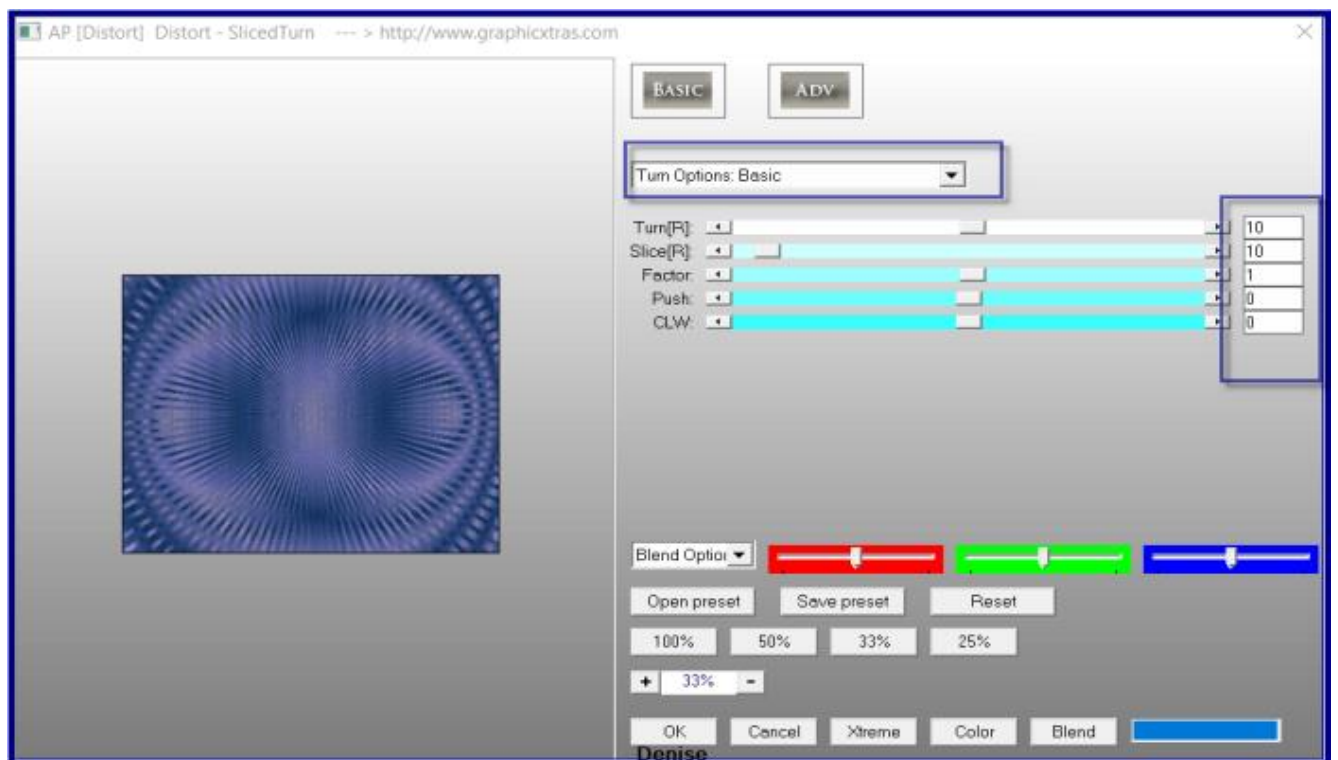
Edit/Copy Edit/Paste as New Layer

Leave where it is

Effects/3D Effects/Drop Shadow as follows:



Select Raster 3 Layer
 Selections/Load/Save Selection/Load Selection D.D.Selection4 from Disk
 Effects/Plugins/AP Innovations 01/Distort/Distort-Sliced Turn as follows:



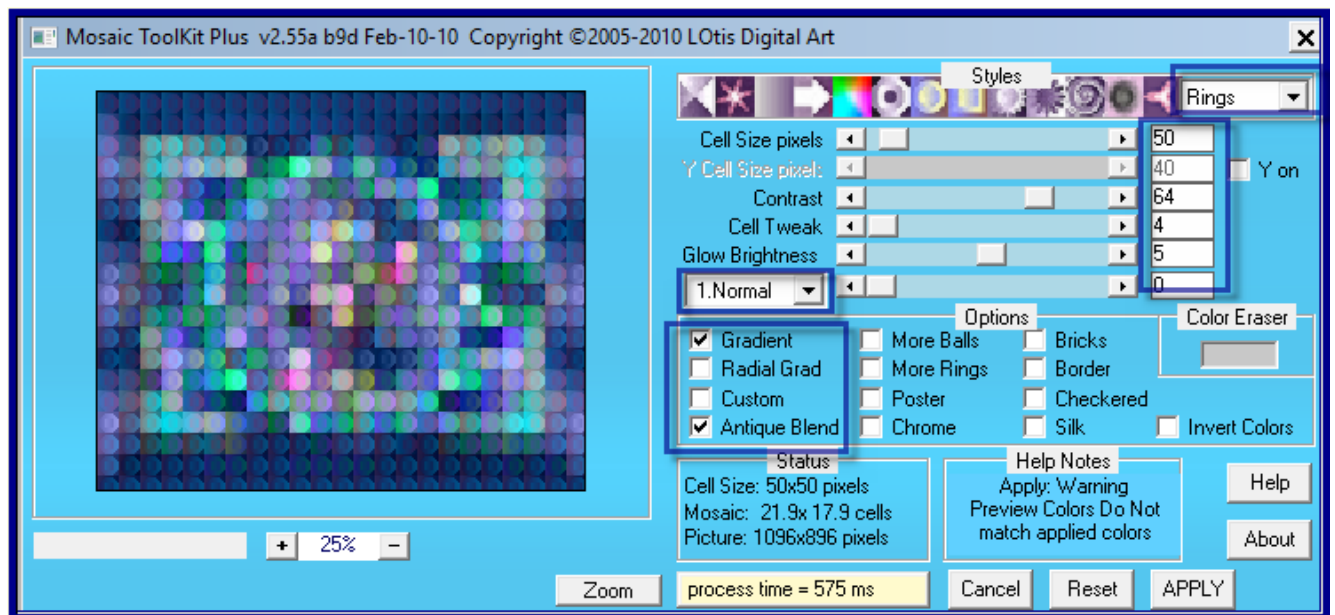
Selections/Select None

Step Nine:

Image/Add Borders/3 pixels/Foreground Colour
Image/Add Borders/3 pixels/Background Colour
Image/Add Borders/3 pixels/Foreground Colour
Selections/Select All
Selections/Modify/Contract 9 pixels
Selections/Invert
Effects/Plugins/Eye Candy 4000/Shadowlab
Repeat Shadowlab/Direction 315
Selections/Select All
Image/Add Borders/40 pixels/Background Colour
Selections/Invert
Layers/New Raster Layer
Change Foreground Gradient to Foreground/Background Linear Gradient
Angle 0/Repeats 5
Flood fill with Foreground Gradient
Effects/Texture Effects/Texture BUT change Depth setting to 5
Selections/Select All
Image/Add Borders/3 pixels/Foreground Colour
Image/Add Borders/3 pixels/Background Colour
Image/Add Borders/3 pixels/Foreground Colour
Selections/Invert
Effects/Plugins/Eye Candy 4000/Shadowlab
Repeat Shadowlab/Direction 135
Selections/Select All

Step Ten:

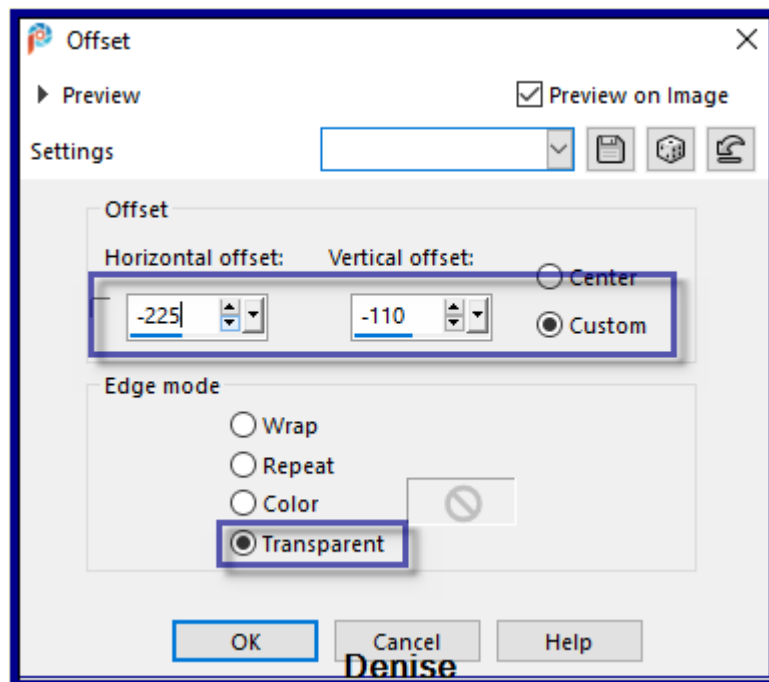
Image/Add Borders/40 pixels/White
Selections/Invert
Flood fill with Foreground Gradient
Effects/Plugins LOtis Mosaic ToolKit Plus v2.55 as follows:



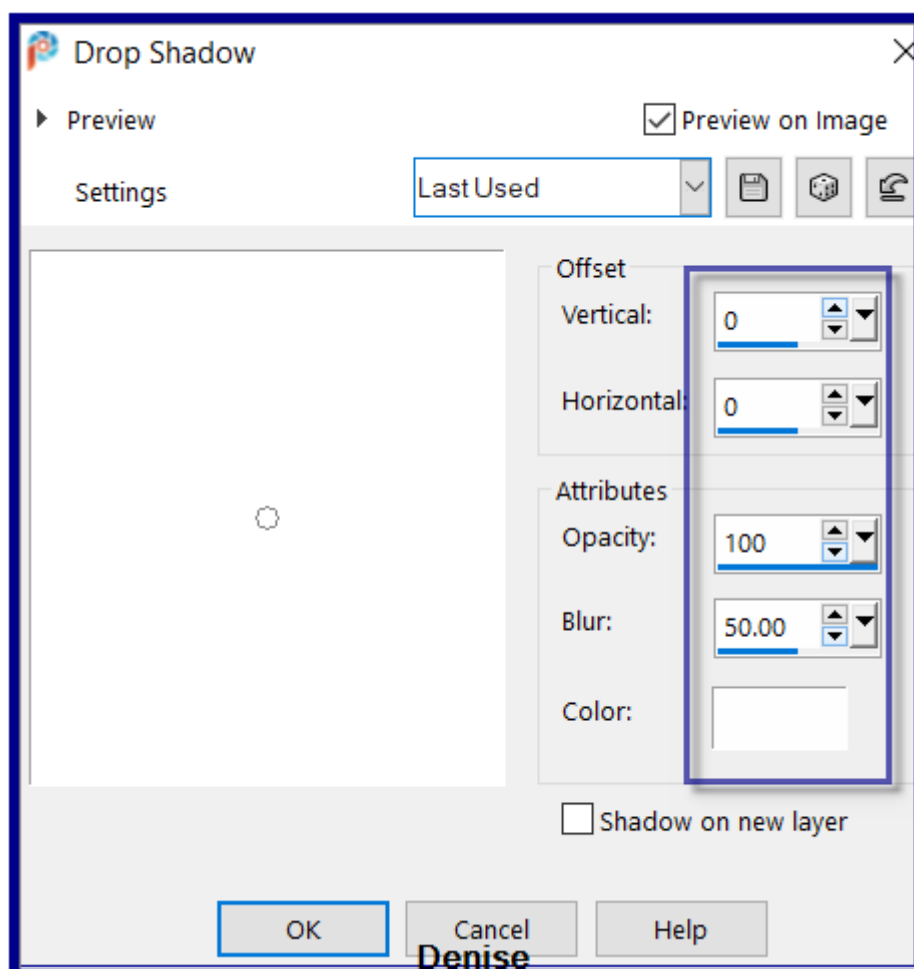
Selections/Select All
 Image/Add Borders/3 pixels/Foreground Colour
 Image/Add Borders/3 pixels/Background Colour
 Image/Add Borders/3 pixels/Foreground Colour
 Selections/Invert
 Effects/Plugins/Eye Candy 4000/Shadowlab
 Repeat Shadowlab/Direction 315
 Selections/Select None

Step Eleven:

Maximise Peacock_LR-4-6-18.png
 Edit/Copy Edit/Paste as New Layer
 Image/Resize/85% (Resize All Layers box unchecked)
 Carefully remove the Tuber's Watermark with Eraser Tool
 Effects/Image Effects/Offset as follows:

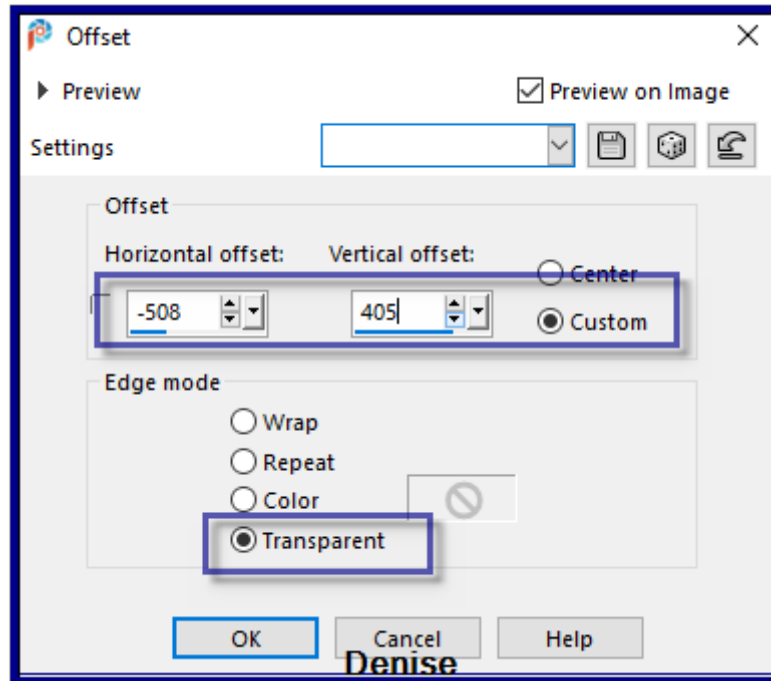


Effects/3D Effects/Drop Shadow as follows:



Step Twelve:

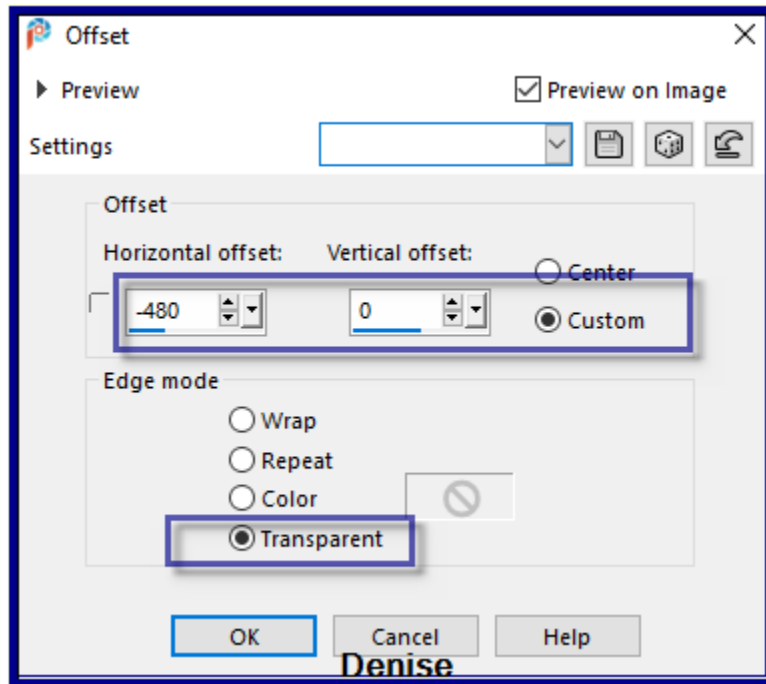
Maximise image made in Step Seven
Image/Resize 20% (Resize All Layers Box ticked)
Adjust/Sharpness/Sharpen
Effects/Plugins/Alien Skin Eye Candy 5.0/Impact/Glass Clear
Edit/Copy Edit/Paste as New Layer
Effects/Image Effects/Offset as follows:



Effects/Plugins/Simple/Top Left Mirror
Adjust/Sharpness/Sharpen

Step Thirteen:

Maximise PeacockScroll.png
Edit/Copy Edit/Paste as New Layer
Image/Resize/90% (Resize All Layers Box unticked)
Adjust/Sharpness/Sharpen
Effects/Image Effects/Offset as follows:



Layers/Duplicate
 Image/Mirror/Horizontal OR Image/Mirror
 Layers/Merge/Merge Down
 Effects/Plugins/Filters Unlimited 2.0/MuRa's Seamless/Emboss at
 Alpha/Default Settings
 Effects/3D Effects/Drop Shadow BUT change colour to Background Colour

Step Fourteen:

Maximise Signature.png
 Edit/Copy Edit/Paste as New Layer
 Place at bottom of Layer
 Layers/New Raster Layer
 Add your Watermark
 Layers/Merge All Flatten
 Image/Resize/1000 pixels wide - height will adjust itself
 File/Export/JPEG Optimiser/Compression Value 20

I hope you have enjoyed this tutorial
 A big thank you to the ladies who test my Tutorials

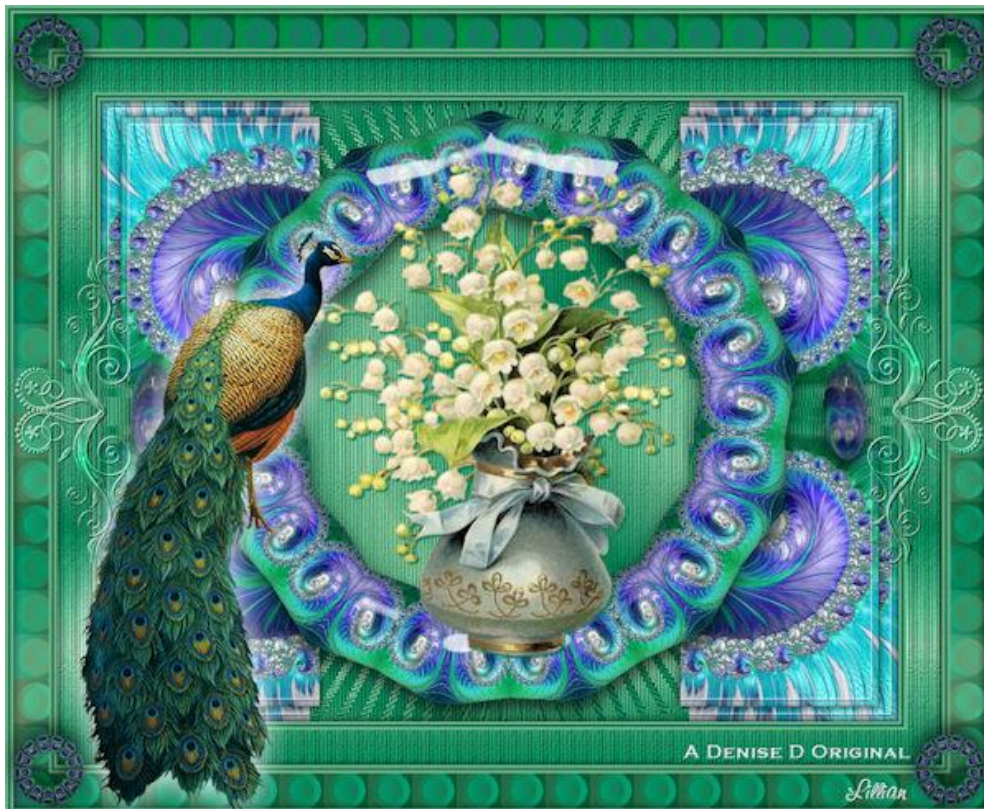
TESTERS' RESULTS



BETTY



FRAN



LILLIAN



<https://escapingtopsp2.blogspot.com/>