

GOLD
KEY®

BORIS KARLOFF

90053-412

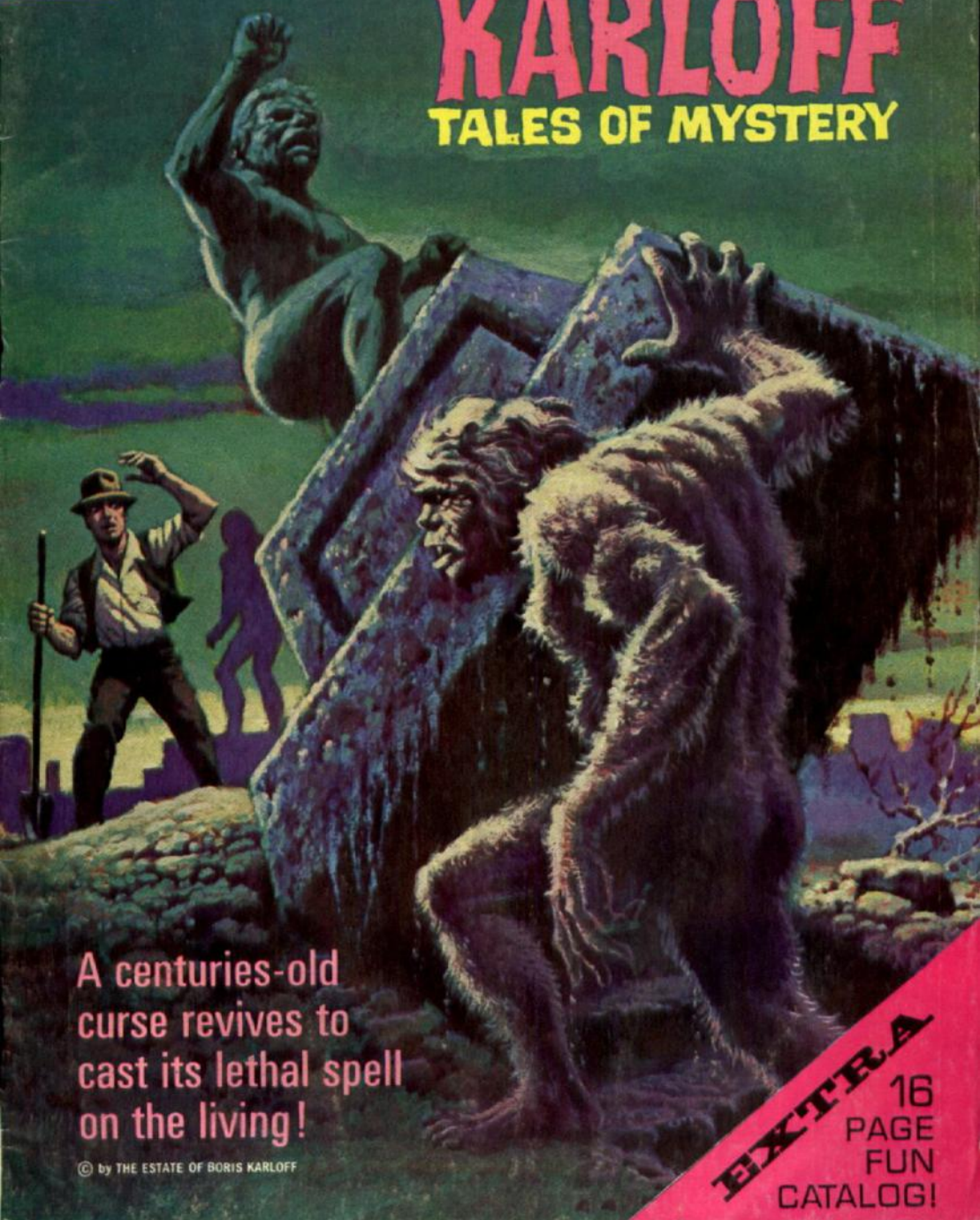
25¢

BORIS



KARLOFF

TALES OF MYSTERY



A centuries-old
curse revives to
cast its lethal spell
on the living!

© by THE ESTATE OF BORIS KARLOFF

EXTRA
16
PAGE
FUN
CATALOG!

BORIS KARLOFF
Tales of Mystery

THE SHIP'S PROW

SAN FRANCISCO, IN THE LATTER
HALF OF THE 19TH CENTURY...

GOODNIGHT, JOE DREW--
AND GOODBYE! I'M RID
OF YOU FOREVER!

OH, MY! THINGS DON'T SEEM VERY SHIP-
SHAPE FOR OUR TWO PARTNERS! BUT WITH
JOE OUT OF THE WAY, AL CARTER WILL
HAVE CLEAR SAILING...TO TERROR!



LOOKING CAREFULLY ABOUT, AL
CARTER DROPS THE WEIGHTED
BODY OFF THE PIER...

IT WAS BAD ENOUGH
SPLITTING PROFITS--BUT
WHEN YOU GOT **REAL**
GREEDY...



IT DOESN'T
MATTER ANY
MORE--NOW
I MAKE THE
DECISIONS!
HA HA!

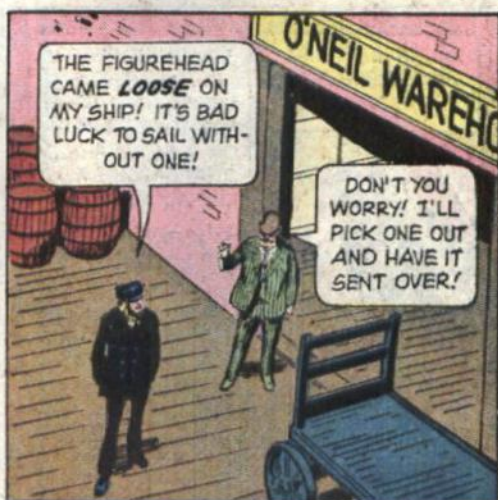


GRRRAHH!

EH...?
WHAT
WAS...









AL CARTER HITS THE SWELLING WATER, THEN BLACKS OUT! ALL ABOUT HIM DANCE NIGHT-MARE IMAGES...



IT IS ONLY A FEW SECONDS LATER THAT CARTER COMES TO AGAIN...

GOT TO GET OUT OF HERE... GET TO THE SURFACE! NEED AIR... WHAT...? I C-CAN'T MOVE...



NOOOOOO!



SOMETIME LATER...

GOOD MORNING! I JUST GOT A NEW SHIP AND I NEED A FIGURE-HEAD FOR THE PROW!



AHH, I BELIEVE I HAVE JUST THE THING!

LIKE IT? IT'S MY MOST SUCCESSFUL DESIGN! WHY, I MUST HAVE SOLD A DOZEN OF THEM JUST THIS MONTH!



A MONSTER ... OR THE DELUSION OF A GUILT-POSSESSED MURDERER? PERHAPS WE SHOULD ASK JOE DREW, HMMMM?





PUMP THE TOWER!

HEAR THE JET-LIKE WHINE AS AIR SPINS THE TURBINE-LIKE POWER WHEEL. FASTER AND FASTER. THE POWER IS IN THE TOWER!



WILD WHEELIES!



CORNERS ON TWO WHEELS LIKE THE PROS!



LEAPS OVER 4 TO 17 CARS!



BIG SET CONTAINS: TTP TURBO TOWER OF POWER, TTP STUNT CYCLE, TTP STUNT CAR, 17 CAR JUMP MAT, JUMP BAR AND ACCESSORIES, MONORAIL, PYLONS, TRAFFIC BARRELS, ETC. NO BATTERIES!

OTHER CAR & CYCLE SETS AVAILABLE

Kenner

&
General Mills

DELUXE THRILL SET

