

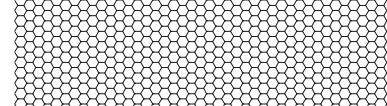
C1 ACCESSIBILITY PLAN-LRG  
1/4" = 1'-0"

### ACCESSIBILITY LEGEND

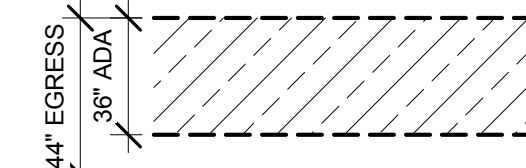
CLEAR FLOOR SPACE AT FIXTURES



MANEUVERING CLEARANCE AT DOORS

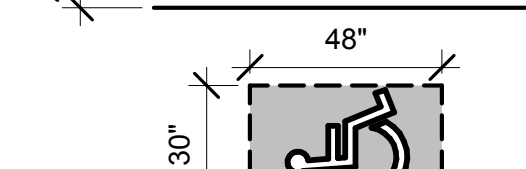


5'-0" CLEAR AND LEVEL SPACE AT DOORS  
(EXTERIOR) 2% SLOPE OR LESS SLOPE/CROSS SLOPE

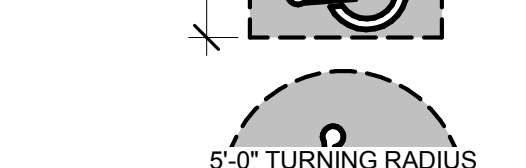


36" MIN. CLEAR ACCESSIBLE ROUTE—

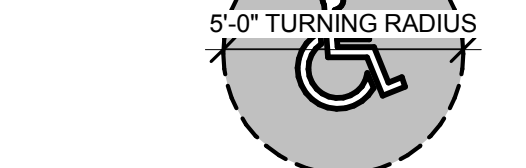
44" REQUIRED EGRESS PATH



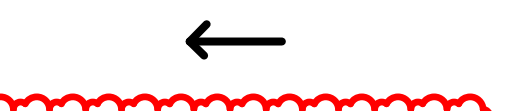
30" X 48" WHEEL CHAIR SPACE



5'-0" TURNING RADIUS



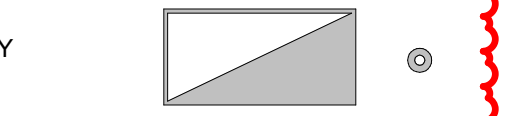
DOOR APPROACH



EXIT LIGHT WITH TWO LAMPHEADS,  
RE: ELECTRICAL



RECESSED LIGHTING  
FIXTURE W/ EMERGENCY  
BATTERY PACK,  
RE: ELECTRICAL



### ACCESSIBILITY NOTES

- All cross slopes that are a portion of the accessible route shall be a maximum of 2%.
- If umbrellas or awnings are used on the site, the bottom flaps shall be a minimum of 6'-8" above the finished grade.
- Accessible tables shall be a minimum of 27" clear knee space A.F.F. and have a clear area of at least 19" deep. Top of table shall be 34" A.F.F.
- Coat hooks in the toilet stalls shall be mounted to the backsides of doors at 48" A.F.F. in accessible stalls and 60" in standard stalls.
- Flush valves on the toilets shall always be located on the wide side of the toilet stall. Utilize 5 lbs. of force or less to operate.
- All panic hardware shall be mounted no higher than 48" A.F.F.
- All floor drains in kitchen shall be located out of path of travel so that the floor does not have a slope greater than 2% along an accessible route.
- All thresholds, floor level changes, and floor transitions shall not exceed 1/2" in height and shall be beveled with a slope no greater than 1:2.
- All light switches, volume controls, and thermostats in public areas shall be mounted no higher than 48" A.F.F. U.N.O.
- For clarification of requirements or questions, call the architect of record.

### 2012 NFPA NOTES

- Provide fire suppression system as shown on mechanical drawings.
- Fire alarm system is required per NFPA 101.
- Provide glass types as shown on A301L and where shown on interior elevations.
- Provide 3 #10 ABC general purpose fire extinguishers suitable for class ABC fires using 20% chemical. Locate as per local authorities.
- Provide 2.6 liter K rated fire extinguisher as required in the kitchen as per IFC 904.11.5.2.
- Provide class "C" minimum finishes on walls as specified in finish schedule on A211L as per IFC Table 803.3.

### 2012 IBC NOTES

- Provide fireblocking in walls so that the vertical distance shall not exceed 10" (IBC 717.2.2).
- Provide fireblocking at ceilings, roof lines and any connection of vertical and horizontal concealed spaces (IBC 717.2.3).
- Fire blocking shall be 2" nominal lumber or 2 layers of 3/4" plywood with joints staggered. (IBC 717.2.1)
- Provide draftstopping in attic as shown on detail. (IBC 717.4.3)
- Provide thermal and sound insulation with flame spread index of not more than 25 and smoke development index of not more than 450 as specified (IBC 719.2).
- Roofing of class C materials as specified in specifications. (IBC 1505.1)
- Class "C" ceiling as specified in finish schedule on A211L. (IBC 803.5)
- Occupant load sign by G.C.; provide 2"x8" black sign with 1/2" white Helvetica letters stating "Maximum Occupants in Dining Area 118 people" Chick-fil-A is requiring special inspections in accordance with chapter 17 of the International Building Code.

### CODE SUMMARY

1. OCCUPANCY	ASSEMBLY A2
2. CONSTRUCTION TYPE	VB
3. ALLOWABLE AREA	6,000 SQ. FT.
4. ACTUAL AREA (FOOTPRINT)	4995 SQ. FT.
5. ALLOWABLE HEIGHT	40'-0"
6. REQUIRED WIDTH OF EGRESS	269 PEOPLE x 2 = 538"
7. WIDTH OF EGRESS PROVIDED	EXIT #1 = 34" EXIT #2 = 68" EXIT #3 = 34" EXIT #4 = 42" (STAFF ONLY) TOTAL: 178" TOTAL
8. OCCUPANT LOAD	
ASSEMBLY UNCONCENTRATED (PER NFPA 101 LSC TABLE 7.3.1.2)	
DINING	1,482 SF NET -240 SF (FIXED SEATING) SUBTOTAL 1,242 SF / 15 SF = 79 PEOPLE
ASSEMBLY FIXED (PER NFPA 101 LSC TABLE 7.3.1.2)	
DINING	30 (LINEAL FT) / 18" = 20 PEOPLE
BOOTH	79.8 (LINEAL FT) / 18" = 53 PEOPLE
SUBTOTAL:	73 PEOPLE
ORDER AREA (PER NFPA 101 LSC TABLE 7.3.1.2)	142 SF / 3 SF = 47 PEOPLE
EXERCISE AREA	
PLAY AREA	323 SF / 50 SF = 6 PEOPLE
KITCHEN COMMERCIAL	2,070 SF / 100 SF = 21 PEOPLE
KITCHEN	(KITCHEN SERVING, DRIVE THRU AND MULTI-PURPOSE)
BUSINESS OFFICE	64 SF / 100 SF = 1 PEOPLE
ACCESSORY UNOCCUPIED SPACES (ENTRY, MEN, WOMEN, RFR VESTIBULE)	632 SF / 15 SF = 42 PEOPLE
TOTAL OCCUPANT LOAD	269 PEOPLE

OUTDOOR SEATING OCCUPANCY		
OUTDOOR SEATING	488 SF / 15 SF	33 PEOPLE



Chick-fil-A  
5200 Buffington Road  
Atlanta, Georgia 30349-2998

### INTERPLAN

ARCHITECTURE  
ENGINEERING  
INTERIOR DESIGN  
PROJECT MANAGEMENT

604 COURTLAND STREET  
SUITE 100  
ORLANDO, FLORIDA 32804  
PH 407.645.5008  
FX 407.629.9124

SEAL:  
THIS DOCUMENT IS NOT FOR CONSTRUCTION  
UNLESS THE ARCHITECT OR ENGINEER'S  
SIGNATURE AND SEAL APPEAR BELOW

CHICK-FIL-A  
Woodlawn Square FSR  
1201 Johnson Ferry Road, Marietta, GA 30068

FSR# 00802

REVISION SCHEDULE	NO.	DATE	DESCRIPTION
1	04/17/18		REFERENCE: FIRE MARSHA COMMENTS
6	05/07/18		OMIT SPRINKLER SYSTEM

CONSULTANT PROJECT #	2016.0430
PRINTED FOR	BID
DATE	2017/06/26
DRAWN BY	AD

Information contained on this drawing and in all digital files produced for above named project may not be reproduced in any manner without express written or verbal consent from Interplan LLC. REUSE OR REPRODUCTION OF THESE DOCUMENTS TO THE ORIGINAL USE OR PURPOSE FOR WHICH THEY WERE PREPARED, REPRODUCTIONS, CHANGES OR ASSIGNMENTS ARE PROHIBITED.

ACCESSIBILITY SHEET  
-LRG

SHEET NO.

G-002L