

**RECORD OF SURVEY NO. 34-103**

OF THE RIGHT OF WAY OF INTERSTATE ROUTE 09-MON-395 THROUGH PORTIONS OF SECTION 5, TOWNSHIP 1 NORTH, RANGE 26 EAST, M.D.B.&M. AND SECTION 32, TOWNSHIP 2 NORTH, RANGE 26 EAST, M.D.B.&M. IN THE UNINCORPORATED TERRITORY OF THE COUNTY OF MONO, STATE OF CALIFORNIA.

MONO 1956 USC&GS BRASS CAP PM 55.99  
N 2,194,788.24  
E 6,949,211.57

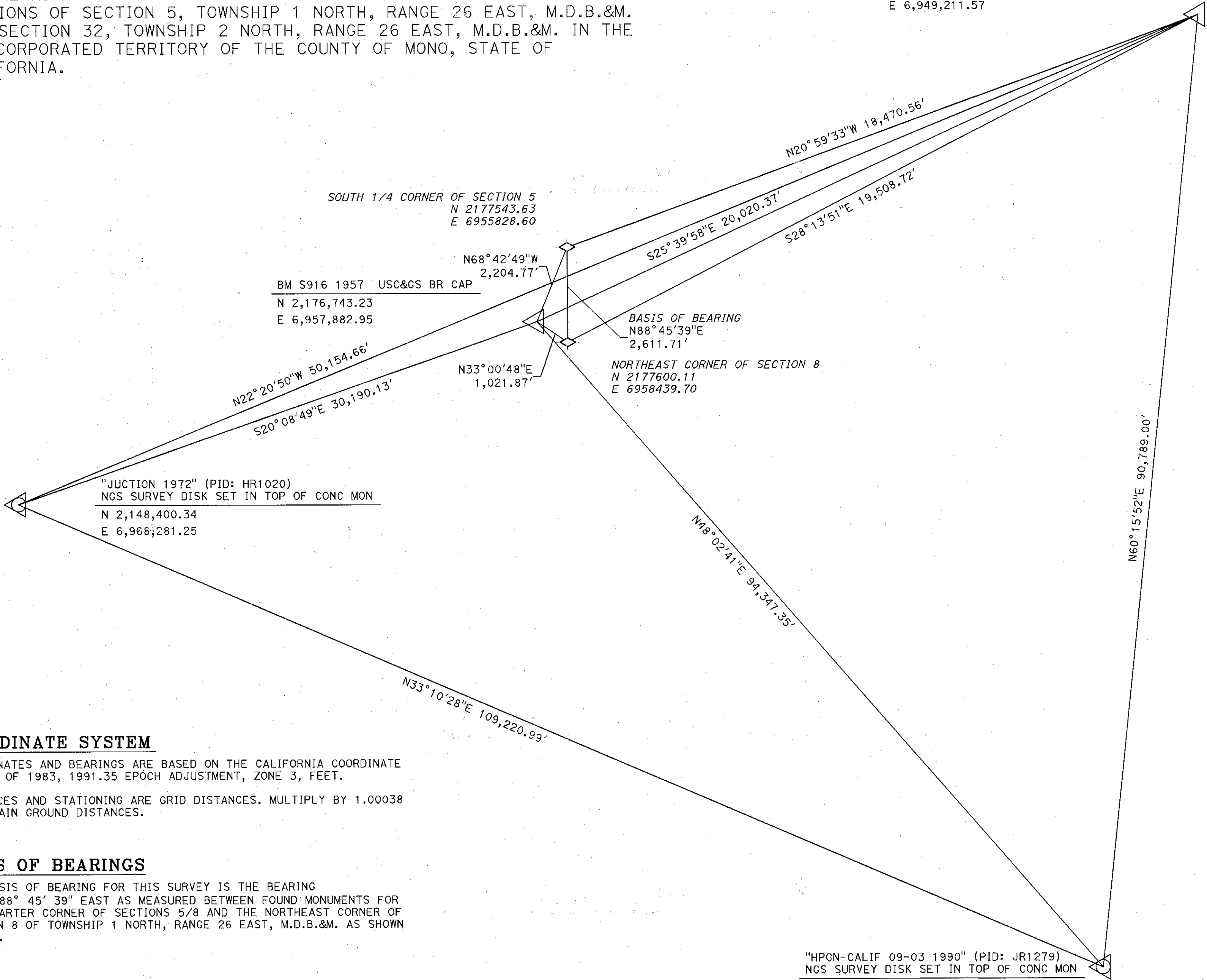
**CONTROL SCHEME**

**LEGEND**

- FOUND HORIZONTAL CONTROL MONUMENT WITH PUBLISHED VALUES
- FOUND HORIZONTAL CONTROL MONUMENT
- FOUND SECTION MONUMENT AS NOTED



NOT TO SCALE



**COORDINATE SYSTEM**

COORDINATES AND BEARINGS ARE BASED ON THE CALIFORNIA COORDINATE SYSTEM OF 1983, 1991.35 EPOCH ADJUSTMENT, ZONE 3, FEET.

DISTANCES AND STATIONING ARE GRID DISTANCES. MULTIPLY BY 1.00038 TO OBTAIN GROUND DISTANCES.

**BASIS OF BEARINGS**

THE BASIS OF BEARING FOR THIS SURVEY IS THE BEARING NORTH 88° 45' 39" EAST AS MEASURED BETWEEN FOUND MONUMENTS FOR THE QUARTER CORNER OF SECTIONS 5/8 AND THE NORTHEAST CORNER OF SECTION 8 OF TOWNSHIP 1 NORTH, RANGE 26 EAST, M.D.B.&M. AS SHOWN HEREON.

"HPGN-CALIF 09-03 1990" (PID: JR1279)  
NGS SURVEY DISK SET IN TOP OF CONC MON  
N 2,239,819.21  
E 7,028,045.92

STATE OF CALIFORNIA  
CALIFORNIA STATE TRANSPORTATION AGENCY  
DEPARTMENT OF TRANSPORTATION

**RECORD OF SURVEY**

NO SCALE

DISTRICT	COUNTY	ROUTE	SHEET PM	SHEET NO.	TOTAL SHEETS
09	MONO	395	52.7-53.9	2	5