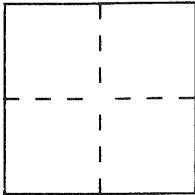


CORNER RECORD

Document Number 1010City of Unincorporated (Hayward)County of Alameda, CaliforniaBrief Legal Description Lot 8 / Lot 9, Tract 4694 filed-Amended-12-19-84 150 Maps
↳ Book 150 Maps Pg. 2 2

CORNER TYPE

COORDINATES
(Optional)

Government Corner ☐ Control ☐
 Meander ☐ Property ☒
 Rancho ☐ Other ☐
 Date of Survey Nov. 20, 1997

N. _____
 E. _____
 Zone _____ Datum _____
 Elev. _____

Corner — Left as found ☐ Found and tagged ☐ Established ☒ Reestablished ☐ Rebuilt ☐

Identification and type of corner found: Evidence used to identify or procedure used to establish or reestablish the corner:

Nail & Tag - "L.S. 4392"
1/2" dia. Iron Bar w/ plastic cap "L.S. 4392"
Found standard Alameda County Concrete Monuments on
Woodroe Court - (see Plat)

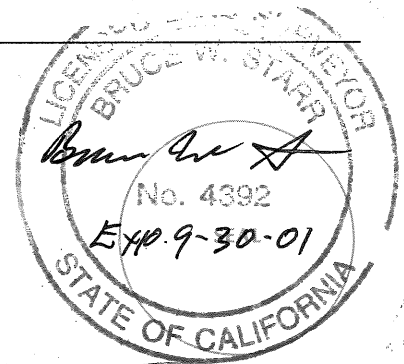
A description of the physical condition of the monument as found and as set or reset: _____

Monuments Found per Tract 4694
1. Nail & Brass Tag - "L.S. 4392" - At Grade level - see Plat
2. 1/2" Dia. Iron Bar with Plastic Cap - "L.S. 4392" - At Grade level - see Plat

SURVEYOR'S STATEMENT

This Corner Record was prepared by me or under my direction in conformance with
 the Land Surveyors' Act on December 19, 1997.

Signed Bruce W. Starr L.S. or R.C.E. Number 4392



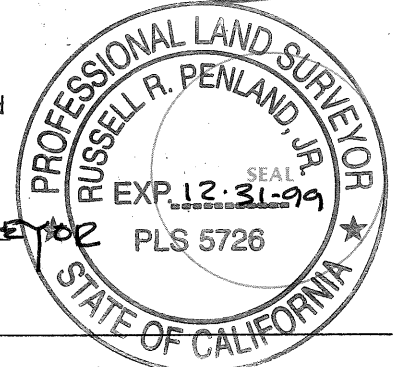
COUNTY SURVEYOR'S STATEMENT

This Corner Record was received 4-8- 1998 and examined

and filed 6-15- 1999

Signed Russell R. Penland, Jr.

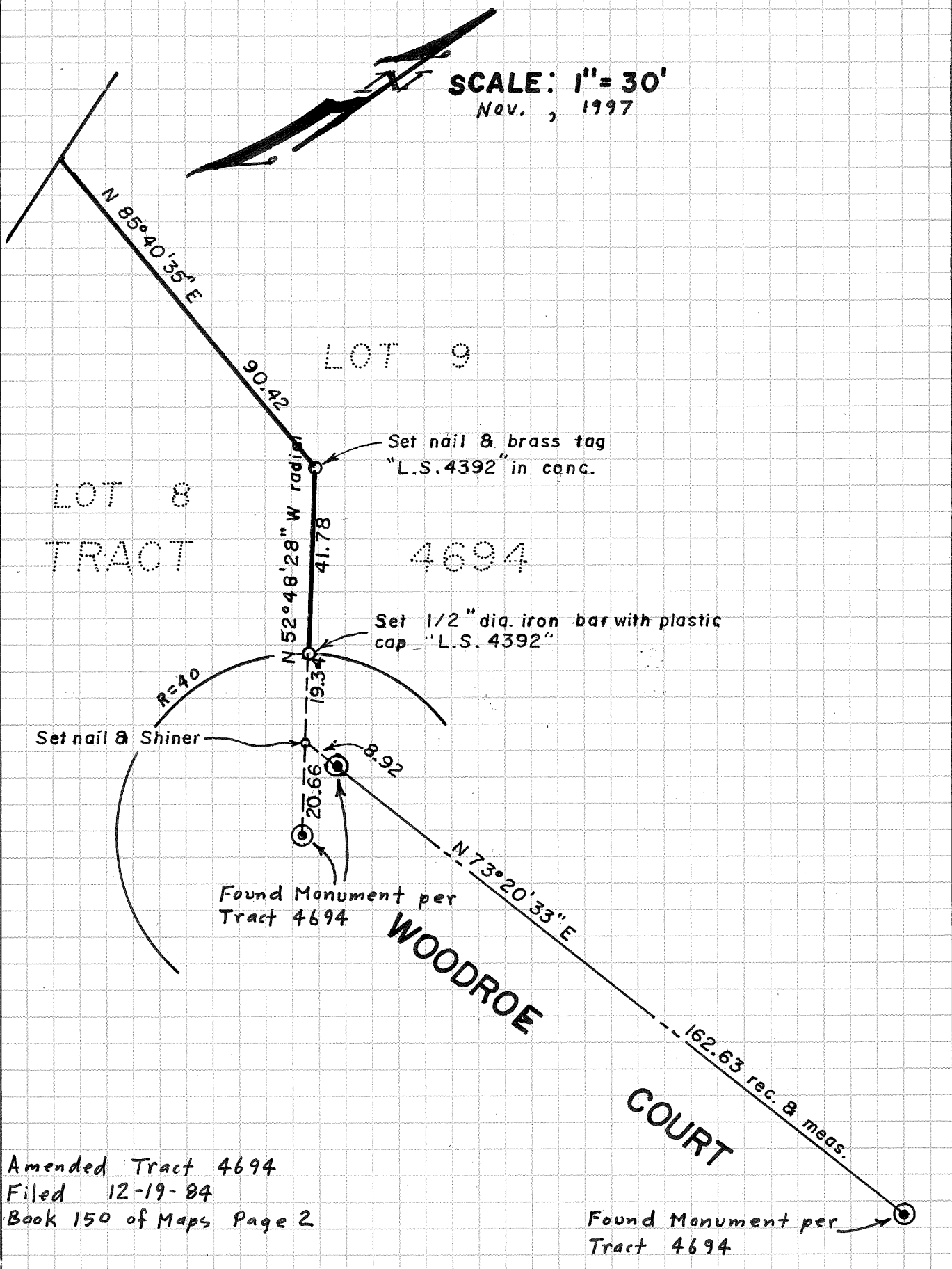
Title DEPUTY
COUNTY SURVEYOR



County Surveyor's Comment _____

SCALE: 1" = 30'

Nov. , 1997



Amended Tract 4694

Filed 12-19-84

Book 150 of Maps Page 2

Found Monument per
Tract 4694