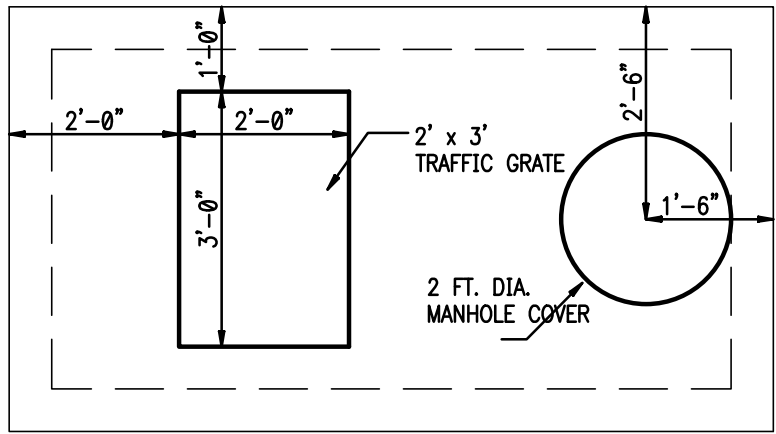
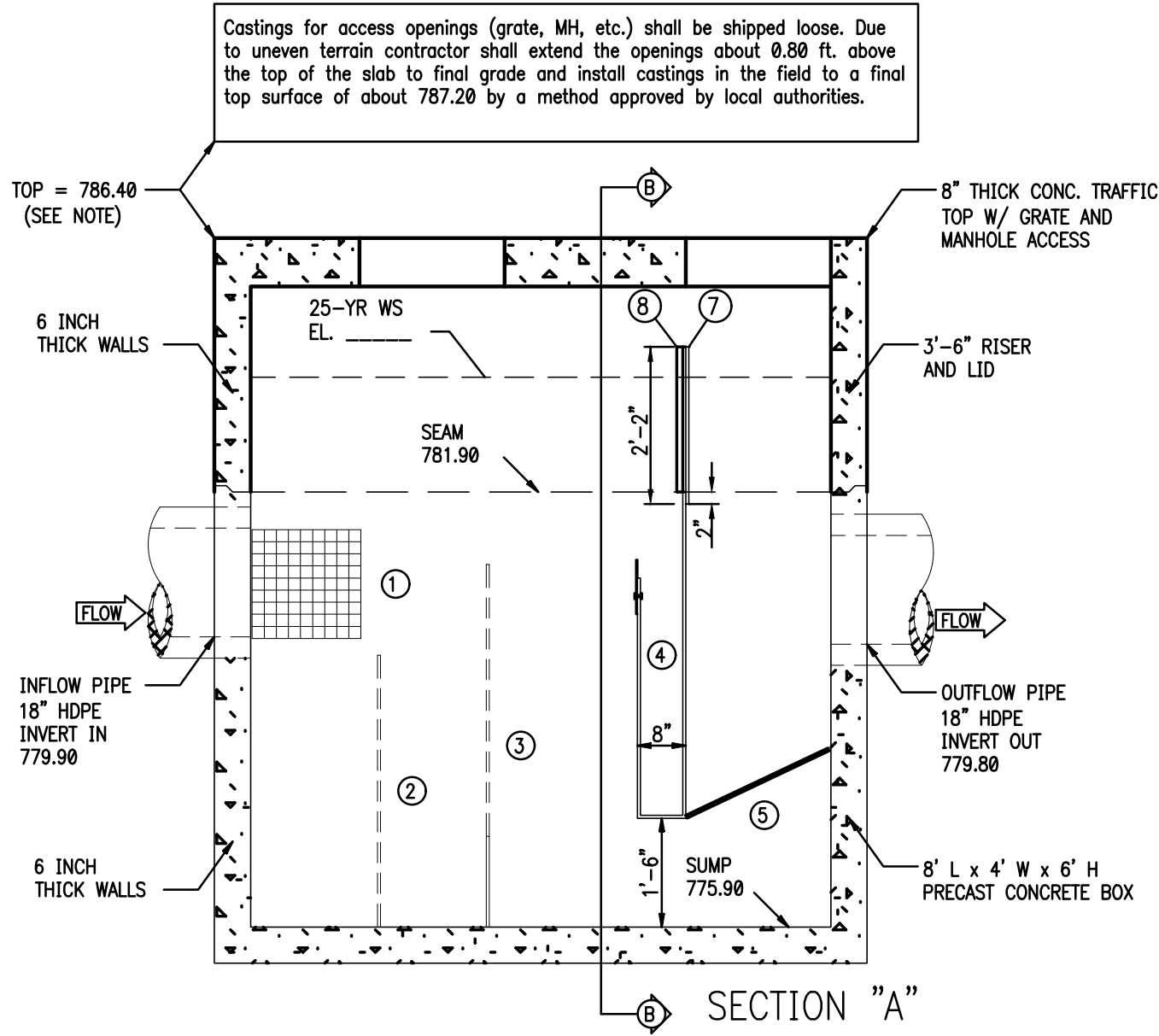


TOP VIEW (INTERNAL)

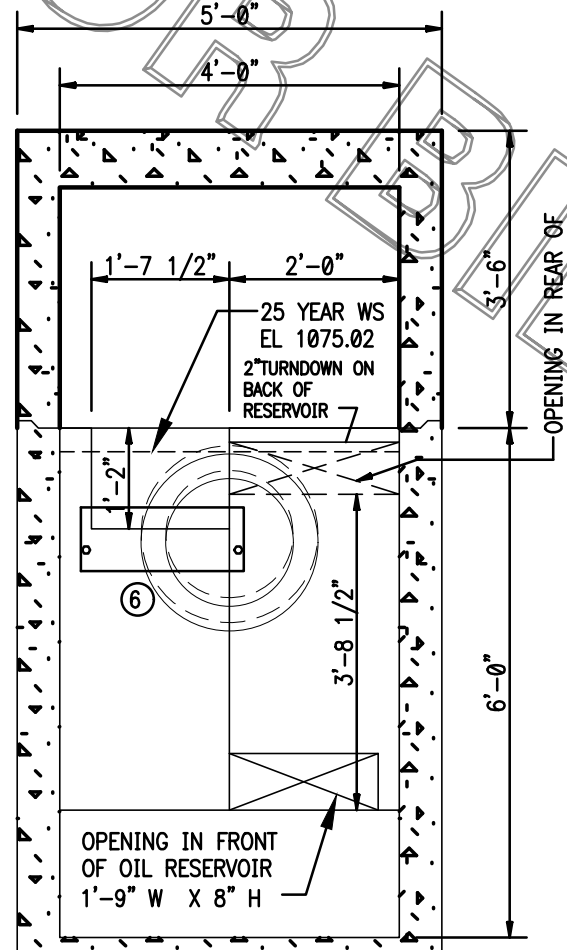


TOP VIEW (SLAB)

1. ALL PIPES SHALL BE CONSTRUCTED TO BE FLUSH WITH THE INSIDE WALLS.
2. CONTRACTOR IS RESPONSIBLE FOR PROVIDING ALL PIPES AND STRUCTURES BETWEEN AND AROUND THE WATER QUALITY VAULTS.
3. ALL VAULT LIFTING CONNECTIONS SHALL BE LOCATED ON THE OUTSIDE OF THE VAULT WALLS.
4. CONCRETE VAULT PRE-CASTER IS RESPONSIBLE FOR THE STRUCTURAL INTEGRITY OF THE CONCRETE VAULTS. WALL AND SLAB THICKNESSES SHALL BE ALTERED ACCORDINGLY.



SECTION "A"



SECTION "B"

- LEGEND
- ① EXPANDED ALUMINUM BASKET W/ 1/4" MESH LINING, 1'-6" H x 1'-6" L x 4'-0" W, Uprtr 4'-0" FROM SUMP
  - ② 1ST INTERNAL BAFFLE W/ 1" HOLES DRILLED AT 1-1/4" O.C., 3'-9" H.
  - ③ 2ND INTERNAL BAFFLE W/ 1" HOLES DRILLED AT 1 1/4" O.C., 5'-0" H.
  - ④ SPILL PROTECTION RESERVOIR 4'-6" H. WITH A 1'-2" FRONT CUT.
  - ⑤ 3/4" COCONUT FIBER FILTER IN ALUMINUM FRAME 2'-2" LONG
  - ⑥ 1/4" ALUMINUM PLATE, 9" H, 1'-11" WIDE.
  - ⑦ 1/8" ALUM PLATE 2'-2" H, 3'-10 1/2" WIDE ATTACHED TO THE OIL RESERVOIR AND THE ANGLES ON EACH WALL. SEAL ALL EDGES WITH OIL RESISTANT SILICONE SEALANT.
  - ⑧ 2 - 3" x 1 1/2" x 1/4" ALUM ANGLES EACH 2'-0" LONG WITH BOLTS AND ANCHORS. ANGLES SHALL HAVE 5/8" DIAMETER HOLES ON THE SHORT LEG 3" FROM EACH END AND AT THE CENTER. PLATE & ANGLES TO BE FIELD INSTALLED.

CRYSTALSTREAM "CRYSTALCLEAN" WATER QUALITY VAULT  
MODEL "846 IB"

JURISDICTION: Douglasville, GA

1 CRYSTALCLEAN SEPARATOR

NTS

Protected by U.S. Patent No's: 6,797,161; 6,936,163; 6,939,461; 6,951,607; 6,994,783; 7,011,743; 7,037,436

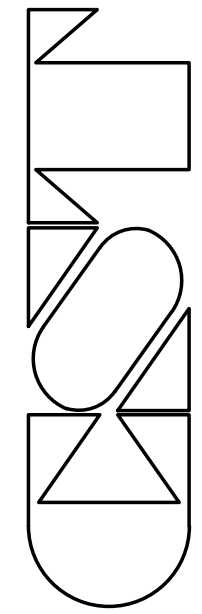
SPECIFICATIONS

1. TOTAL FLOW CAPACITY SHALL BE 10.22 CFS.
2. WATER QUALITY FLOW OF 1.78 CFS MUST BE TREATED WITH A HYDRAULIC LOADING RATE OF 25 GPM/SF OR LESS.
3. SPILL PROTECTION CAPACITY SHALL BE 640 GALLONS BEFORE OVERFLOW.
4. ANY CHANGES OR SUBSTITUTIONS MUST BE APPROVED BY THE ENGINEER AND THE REVIEWING AUTHORITY.

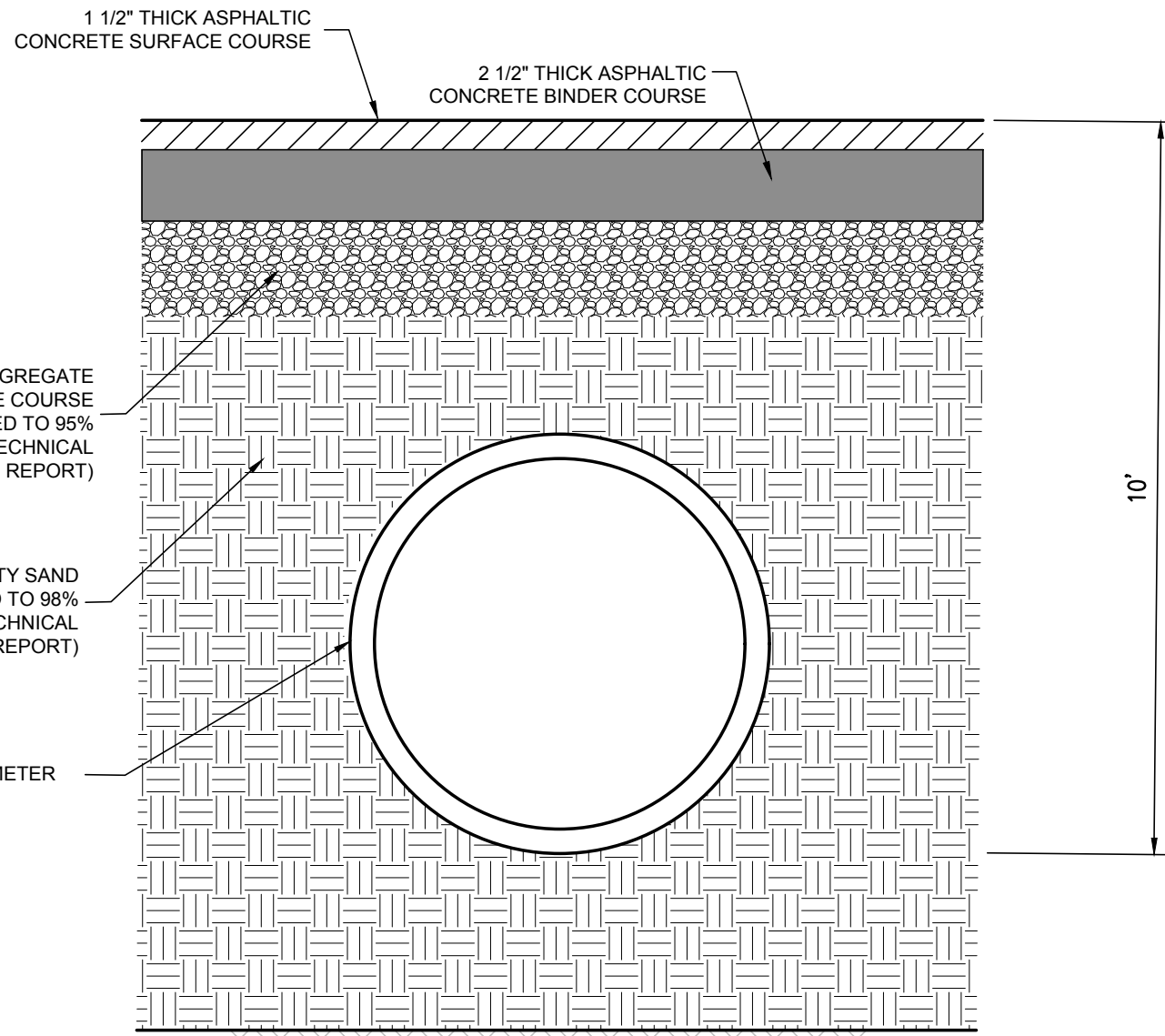
Info-CFLitium 7/26/2017 p.d.s.

JOB NAME:

Chick-Fil-A  
Cherokee Place  
Device No: 05171  
GA0-073-072017  
DESIGN FIRM: Interplan, LLC



CrystalStream Technologies  
THIS DRAWING IS COPYRIGHTED AND IS THE SOLE PROPERTY OF PRACTICAL BEST MANAGEMENT, INC. NO PART OF THIS DRAWING IS TO BE REPRODUCED OR TRANSMITTED IN ANY FORM OR BY ANY MEANS, ELECTRONIC OR MECHANICAL, INCLUDING PHOTOCOPYING, RECORDING, OR BY ANY INFORMATION STORAGE AND RETRIEVAL SYSTEM, WITHOUT THE WRITTEN PERMISSION OF PRACTICAL BEST MANAGEMENT, INC. DESIGN IS BASED ON AND RELIES UPON DATA PROVIDED BY THE ENGINEER NAMED HEREON.



2 SOIL LAYERS AND COMPACTION SPECS

NTS

**CHICK-FIL-A**  
**SAR Cherokee Place FSR**  
115 CHEROKEE PLACE  
CARTERSVILLE, GEORGIA 30121

**FSR# 00534**

| REVISION SCHEDULE |          |               |
|-------------------|----------|---------------|
| NO.               | DATE     | DESCRIPTION   |
| 3                 | 02/20/18 | CITY COMMENTS |

|                      |           |
|----------------------|-----------|
| CONSULTANT PROJECT # | 2017.0149 |
| PRINTED FOR          | Permit    |
| DATE                 | 11/20/17  |
| DRAWN BY             |           |
| CHECKED BY           |           |

Information contained on this drawing and in all digital files produced for above named project may not be reproduced in any manner without express written or verbal consent from authorized project representatives.

SHEET  
STORM WATER QUALITY  
TREATMENT DEVICE DETAIL

SHEET NUMBER

**C-5.2**



**Chick-fil-A**

Chick-fil-A  
5200 Buffington Road  
Atlanta, Georgia 30349-2998

**INTERPLAN**

ARCHITECTURE  
ENGINEERING  
INTERIOR DESIGN  
PROJECT MANAGEMENT

604 COURTLAND STREET  
SUITE 100  
ORLANDO, FLORIDA 32804  
PH 407.645.5008  
FX 407.629.9124

SEAL:  
THIS DOCUMENT IS **NOT FOR CONSTRUCTION**  
UNLESS THE ARCHITECT OR ENGINEER'S  
SIGNATURE AND SEAL APPEAR BELOW.

STUART ANDERSON, P.E.  
GA. REG.# PE038342