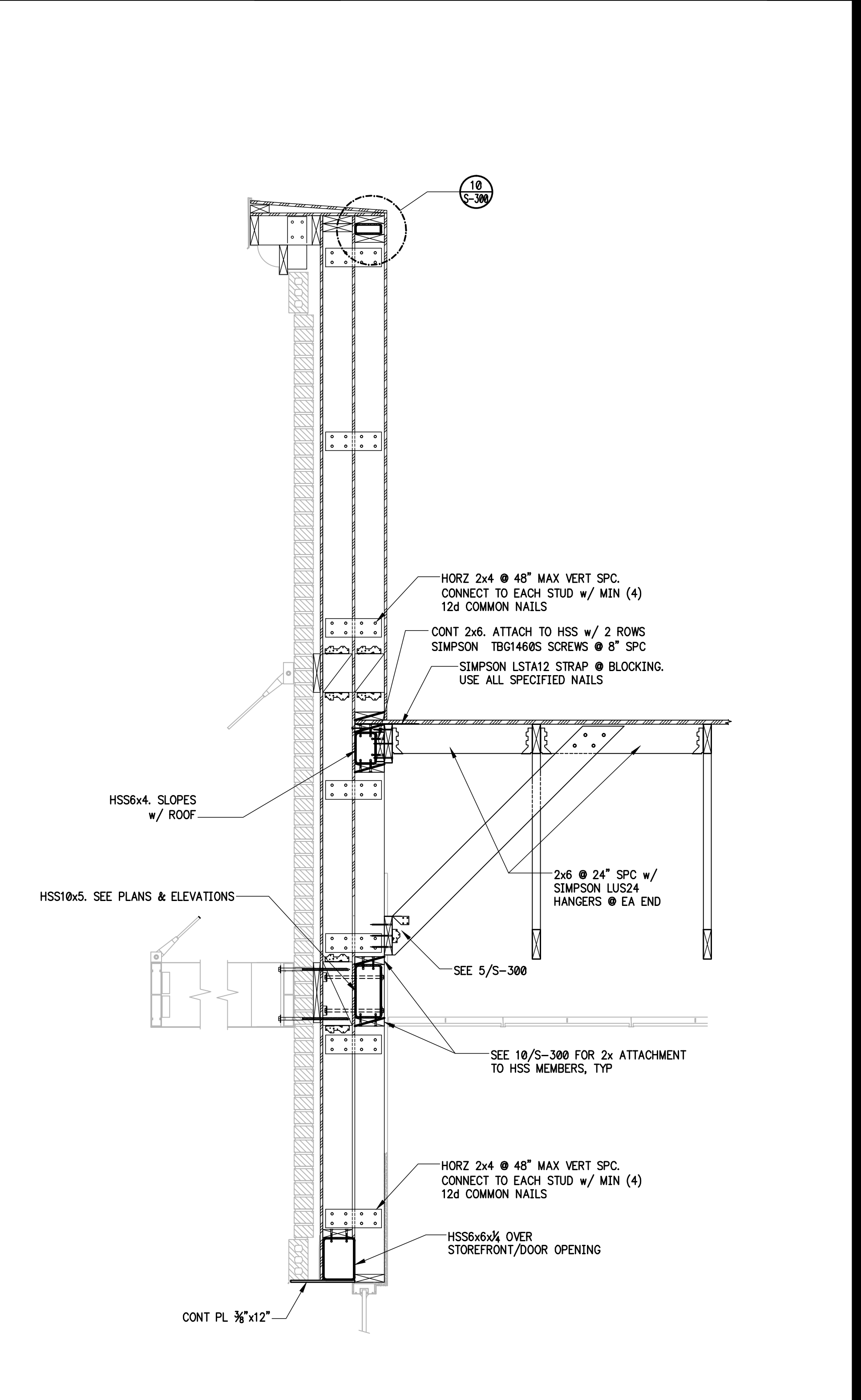
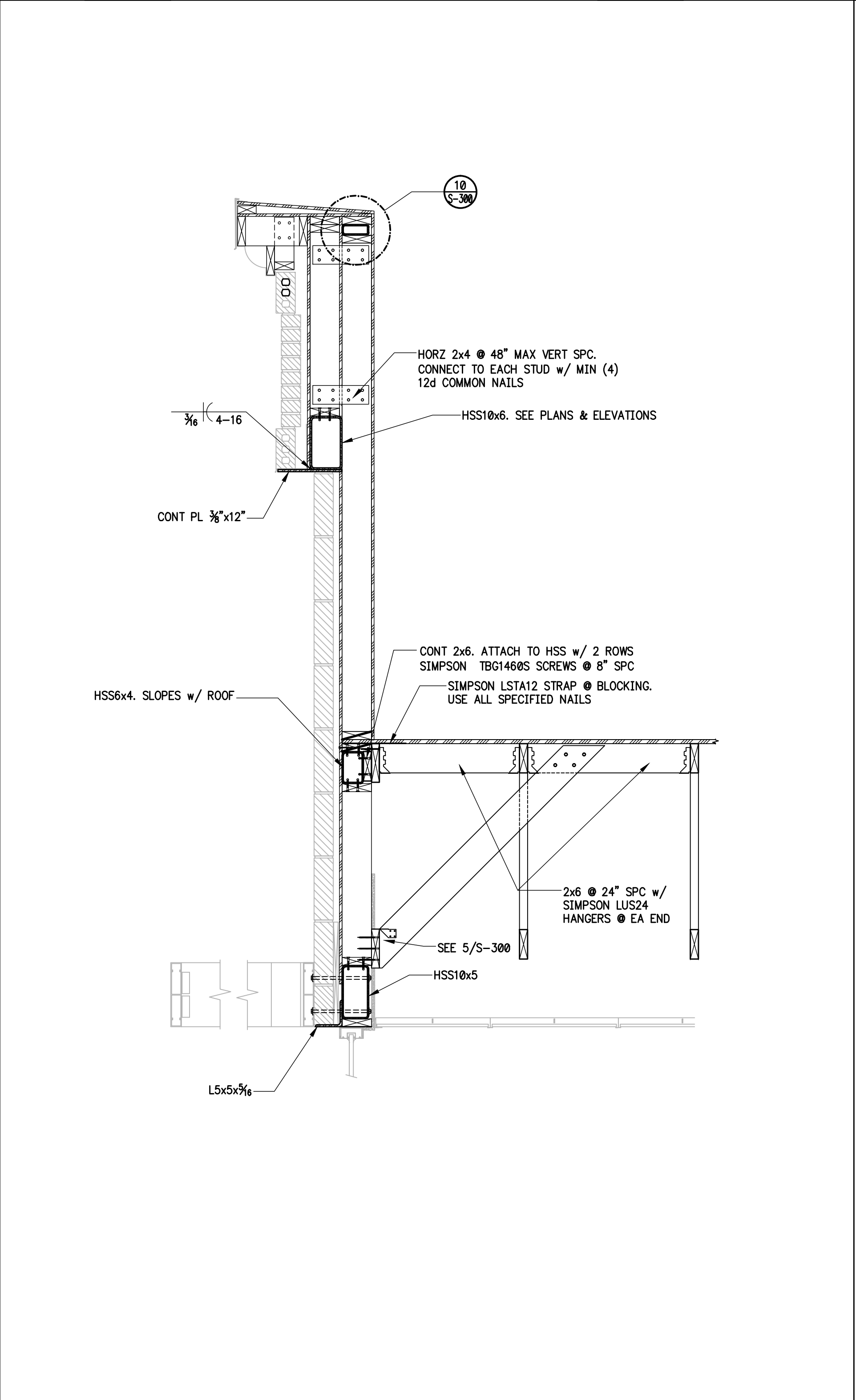
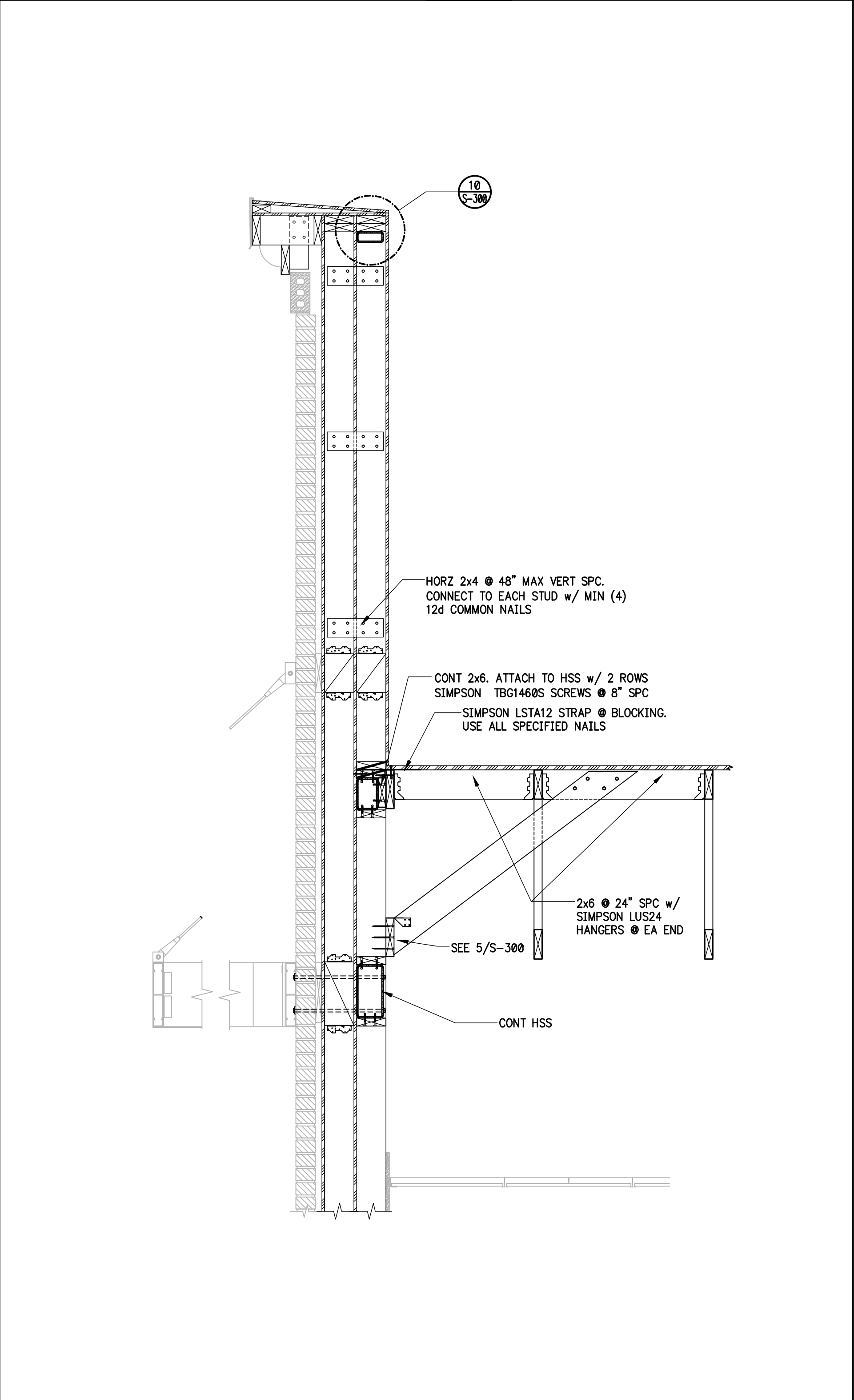
	
DETAIL-TOP OF PARAPET FRAMES		7	TYP HSS TO HSS CONNECTIONS	6	DETAIL-COLUMN B-3 (B-5 OPP HAND)	5	DETAIL COLUMN CONNECTIONS
S-302		SCALE: NONE S-302		SCALE: 3/4"=1'-0" S-302		SCALE: 3/4"=1'-0" S-302	



PANDA RESTAURANT GROUP INC.
1683 Walnut Grove Ave.
Rosemead, California
91770
Telephone: 626.799.9898
Facsimile: 626.372.8288

All ideas, designs, arrangement and plans indicated or represented by this drawing are the property of Panda Express Inc. and were created for use on this specific project. None of these ideas, designs, arrangements or plans may be used by or disclosed to any person, firm, or corporation without the written permission of Panda Express Inc.

REVISIONS:

ISSUE DATE:

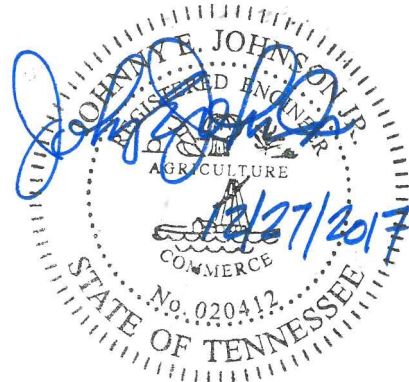
1st	ISSUE FOR PERMIT	08-11-17

DRAWN BY: EMC

PANDA PROJECT #: S8-18-D5306
ARCH PROJECT #: 1706

EMC
STRUCTURAL ENGINEERS, P.C.
4525 Trousdale Drive
Nashville, Tennessee 37204
(615) 781-8199
(615) 781-4088 (fax)

EMC Project No. 17390



PANDA EXPRESS
BERRY FARMS - 2430 Goose Creek Bypass - Lot 194
GOOSECREEK BYPASS at LEWISBURG PIKE
FRANKLIN, TN 37064

2200 TRUE WARM & WELCOME (DD3)

S-302

TYPICAL FRAMING DETAILS & SECTIONS