

TRACT NO. 9622

FOR CONDOMINIUM PURPOSES
CONSISTING OF 2 SHEETS

BEING A SUBDIVISION OF A PORTION OF
THAT PARCEL DESCRIBED IN DEED FROM SAMUEL L. CINA
AND LUCILLE A. CINA TO MANUEL E. RUSSO AND ALVA D. RUSSO
RECORDED MARCH 16, 1946 IN BOOK 1333
OFFICIAL RECORDS OF SANTA CLARA COUNTY, AT PAGE 413
ALSO BEING A PORTION OF A 500 ACRE TRACT, LOT 60 OF THE
PUEBLO LANDS OF THE CITY OF SAN JOSE

CITY OF SAN JOSE
SANTA CLARA COUNTY, CALIFORNIA
DECEMBER, 2004

BASIS OF BEARINGS

MONUMENT LINE OF PRAIRIE VIEW COURT TAKEN AS N37°50'00"W
AS SHOWN ON TRACT NO. 8106 IN BOOK 583 PAGES 5 & 6,
SANTA CLARA COUNTY RECORDS.

NOTES:

1. THE DISTINCTIVE BORDER LINE INDICATES THE BOUNDARY OF
LAND SUBDIVIDED BY THIS MAP AND CONTAINS 0.95 ACRES.
2. DISTANCES GIVEN IN FEET AND DECIMALS THEREOF.

LEGEND

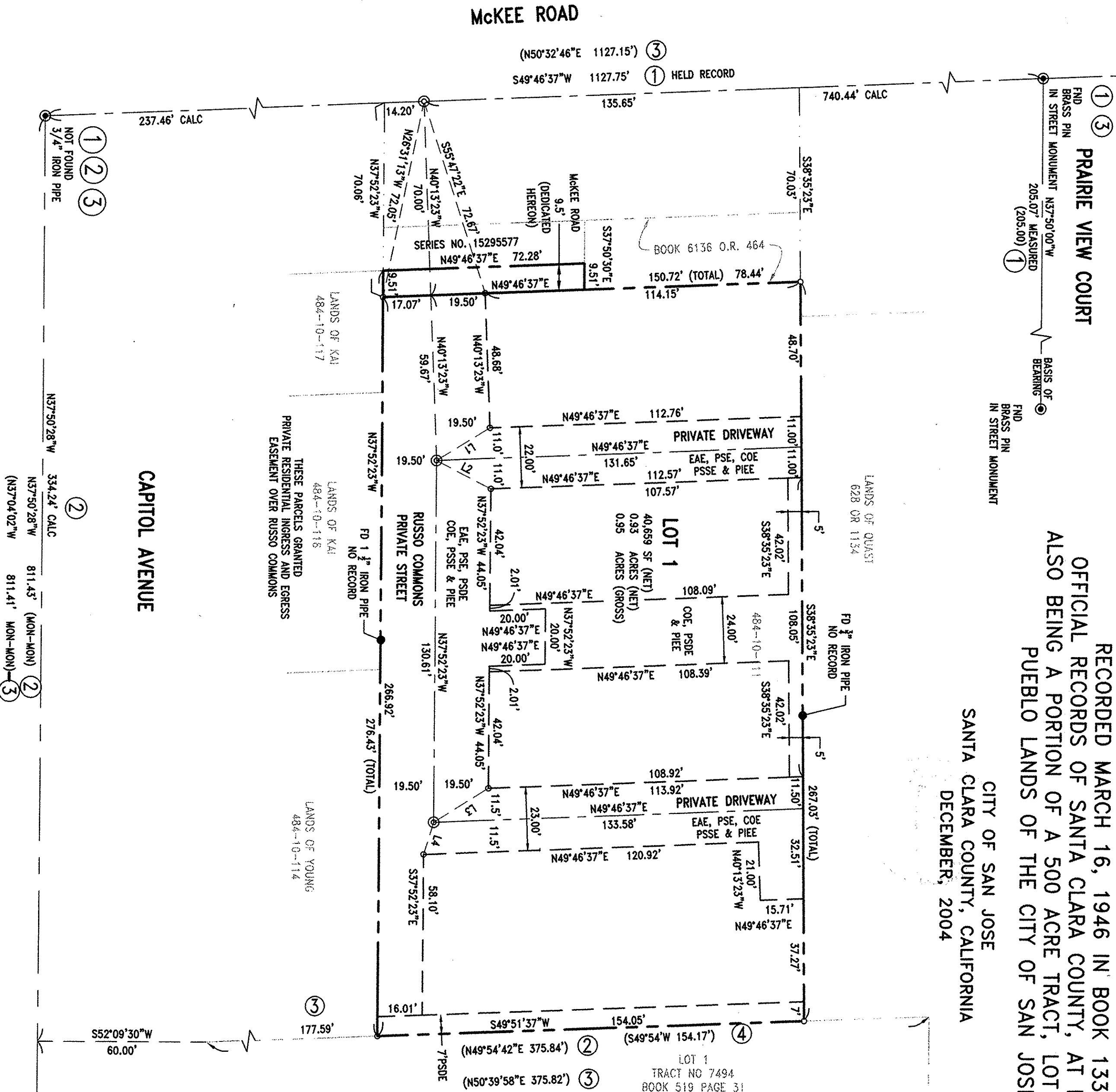
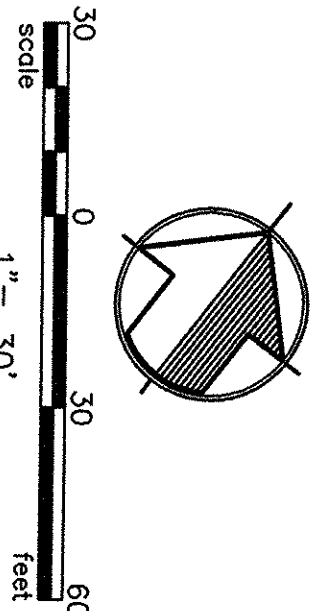
- DISTINCTIVE BORDER
- EXISTING LOT LINE
- EASEMENT
- MONUMENT LINE
- TIE
- FOUND CITY MONUMENT AS NOTED
- SET CITY STANDARD MONUMENT
- A 2 1/2" BRASS DISK
- STAMPED RCE 21755
- SET IN CONCRETE IN WELL
- WITH ROUND FRAME AND COVER
- SET 3/4" IRON PIPE TAGGED
- RCE # 21755
- EAE
- PSSE
- PIEE
- PSDE
- COE
- COVENANT OF EASEMENT

REFERENCE:

- 1 BK 583 M 5-6
- 2 BK 519 M 31-32
- 3 BK 758 M 23-24
- 4 DEED DOCUMENT: 14993141

KETCHUM DRIVE
N37°50'30"W 344.72'
FD BRASS PIN IN MONUMENT
FD BRASS PIN IN MONUMENT
FD BRASS PIN IN MONUMENT

LINE	LENGTH	BEARING
L1	22.38'	S20°22'19"W
L2	22.01'	N79°45'39"E
L3	23.06'	S19°51'48"W
L4	12.17'	S21°09'21"E



CREEGAN+D'ANGELO
Consulting Civil and Structural Engineers
1075 N. TERRY STREET, SUITE 100
SAN JOSE, CA 95128-2823
PHONE: 408-988-1234 FAX: 408-988-0844
SAN JOSE, FAIRFIELD, MONTEREY, PLEASANTON, SAN FRANCISCO, CALIFORNIA