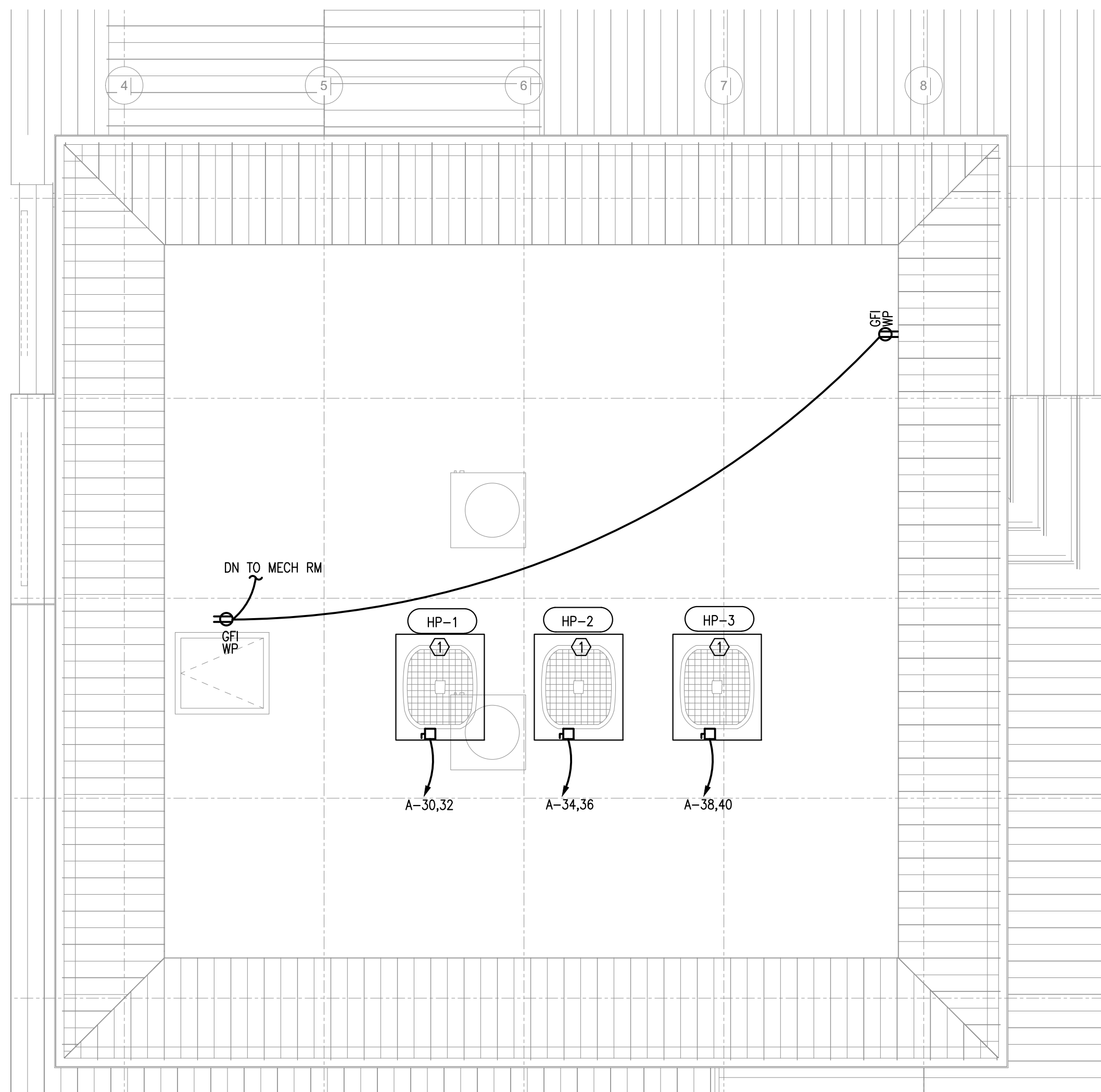
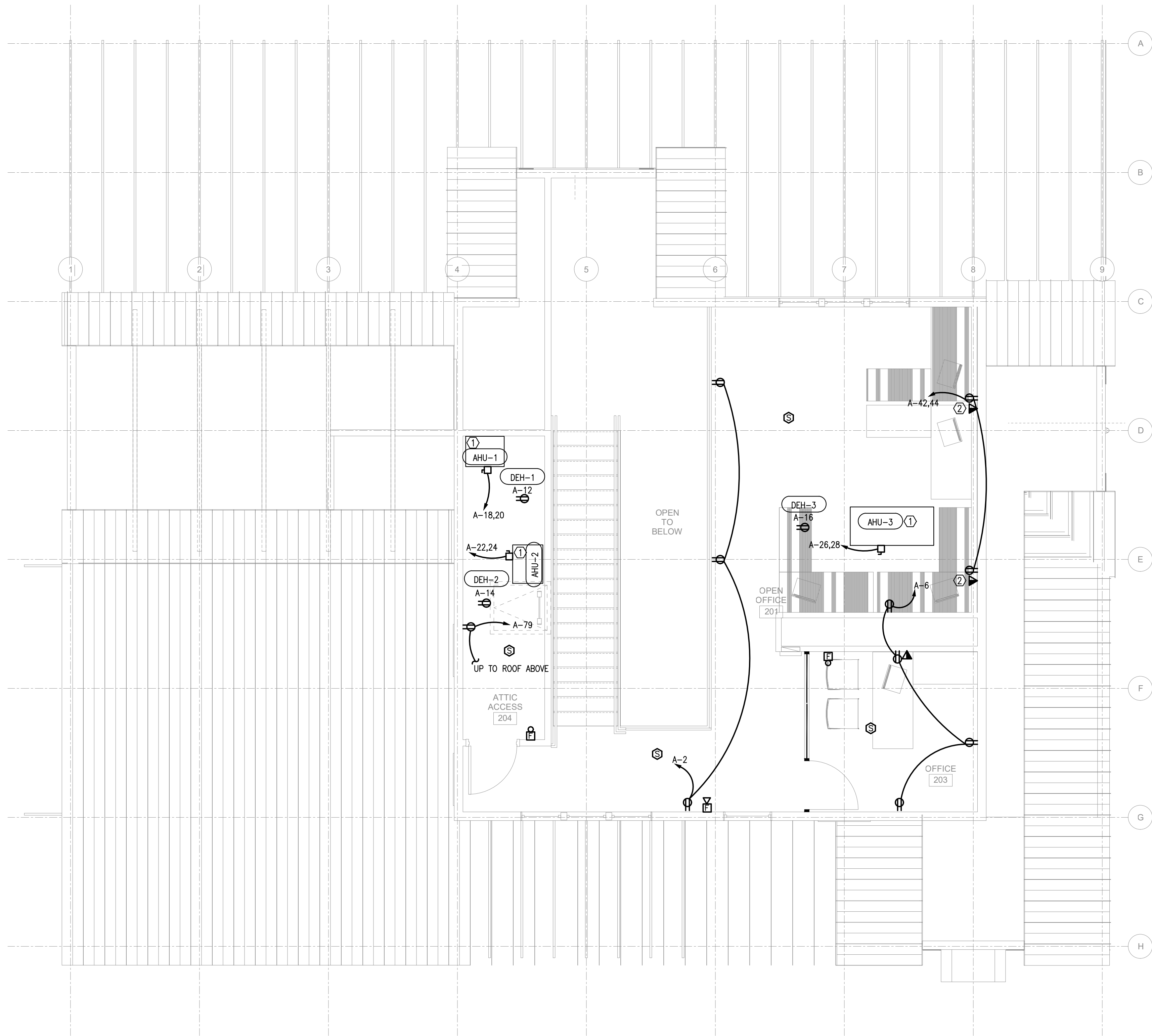


PLOT DATE: Aug 16, 2018 DIRECTOR: E:\2018-058 Elm St Cultural Arts Renovation\ELC\

FILE NAME: E1.2.dwg



2 POWER PLAN- ROOF  
SCALE: 1/4"=1'-0"



1 POWER PLAN- MEZZANINE  
SCALE: 1/4"=1'-0"

KEYNOTES: ①

1. REFER TO "MECHANICAL-ELECTRICAL EQUIPMENT CONNECTION SCHEDULE" FOR PROTECTIVE DEVICE, FEEDER AND RACEWAY REQUIREMENTS OF UNIT. VERIFY WITH MECHANICAL CONTRACTOR EXACT REQUIREMENTS PRIOR TO ROUGH-IN.
2. PROVIDE WALL WHIP TO FURNITURE CUBICLE SYSTEM. COORDINATE EXACT CONNECTION REQUIREMENTS AND LOCATION WITH FURNITURE VENDOR.



SEAL 08.16.2018

**CDH  
PARTNERS  
INC**

675 TOWER RD  
MARIETTA, GA 30060-6958  
TEL (770) 423-0016  
WWW.CDHPARTNERS.COM

ARCHITECT

**COOK  
GENERAL  
CONTRACTING**

3120 FRONTAGE ROAD  
GAINESVILLE, GA 30504  
678.207.1509  
GREGG  
COOKGENERALCONTRACTING.COM

CONTRACTOR

**TRINITY  
ENGINEERING  
GROUP**

1081 THOMPSON BRIDGE RD  
GAINESVILLE, GA 30501  
TEL (770) 535-1044  
FAX: (770) 535-0037

ENGINEER

OWNERSHIP OF DOCUMENTS:  
DRAWINGS AND SPECIFICATIONS AS  
INSTRUMENTS OF SERVICE ARE  
EXCLUSIVE PROPERTY OF TRINITY  
ENGINEERING GROUP. WHETHER  
THE PROJECT FOR WHICH THEY  
WERE PREPARED IS EXECUTED &  
CONSTRUCTED OR NOT, THESE  
DOCUMENTS ARE NOT TO BE  
REPRODUCED IN ANY FORM AND  
ARE NOT TO BE USED BY THE  
PROJECT OWNER NOR ANY OTHER  
ENTITY ON OTHER PROJECTS OR  
FOR ANY EXTENSIONS OR  
ADDITIONS OR ALTERATIONS TO  
THE ORIGINAL PROJECT EXCEPT BY  
WRITTEN AUTHORIZATION &  
PERMISSION FROM AND  
AGREEMENT WITH TRINITY  
ENGINEERING GROUP.

RENOVATION AND ADDITION TO:

ELM STREET CULTURAL ARTS VILLAGE

OFFICES

734 REEVES STREET  
WOODSTOCK, GA 30188

ELECTRICAL POWER PLAN- ROOF / MEZZANINE

REVISION / ISSUE

JOB NUMBER

2018-058

DRAWN

DATE

08.16.2018

SHEET

E-1.2

ISSUED FOR CONSTRUCTION