

# CORNER RECORD

Agency Index

BOOK 131 PAGE 64

Document Number

CR 14155

City of BERKELEYCounty of ALAMEDA, California

Brief Legal Description

CITY OF BERKELEY (C.O.B.) MONUMENT B2117 AS SHOWN UPON THE PARK HILLS ANNOTATED CITY MONUMENT MAP (FILE No. 21126-9) AT 1149 HILLVIEW ROAD (APN 63-3150-15-2)

## CORNER TYPE

## COORDINATES (Optional)

RANCHO  
EL  
SOBRANTEGovernment Corner ☐

Control

☒ ElevationMeander ☐

Property

Units Metric ☐ U.S. Survey Foot ☒Rancho ☐

Other

☐ Horizontal Datum

Zone Epoch Date

Date of Survey 2/4/2020

Vertical Datum

☐ Complies with Public Resources Code §§8801-8819☐ Complies with Public Resources Code §§8890-8902PLS Act Ref: ☐ 8765(d)☒ 8771☐ 8773☐ Other:Corner/  
Monument: ☒ Left as found☐ Established☐ Rebuilt☒ Pre-Construction☐ Found and tagged☐ Reestablished☒ Referenced☐ Post-Construction

Narrative of corner identified and monument as found, set, reset, replaced, or removed:

☒ See sheet #2 for description(s):

FOUND MONUMENT THAT COULD BE DAMAGED OR DESTROYED BY A PROPOSED UNDERGROUND UTILITY CONSTRUCTION PROJECT. MONUMENT WAS REFERENCED AS SHOWN ON PAGE 2 OF 2.

THE PURPOSE OF THIS CORNER RECORD IS TO PRESERVE THE LOCATION OF THE MONUMENT PRIOR TO CONSTRUCTION. NO ATTEMPT WAS MADE TO DETERMINE THE RELATIONSHIP BETWEEN THE MONUMENT AND BOUNDARY LINES OR OTHER MONUMENTS.

## SURVEYOR'S STATEMENT

This Corner Record was prepared by me or under my direction in conformance with the Professional Land Surveyors' Act on MARCH 9, 2020Signed E.P.K. P.L.S. or R.C.E. No. 8911

## COUNTY SURVEYOR'S STATEMENT

This Corner Record was received MAR 11 2020

and examined and filed

Signed D. Ian Wilson P.L.S. or R.C.E. No. 7010Title ALAMEDA COUNTY SURVEYOR

County Surveyor's Comment

CC-19103\_13



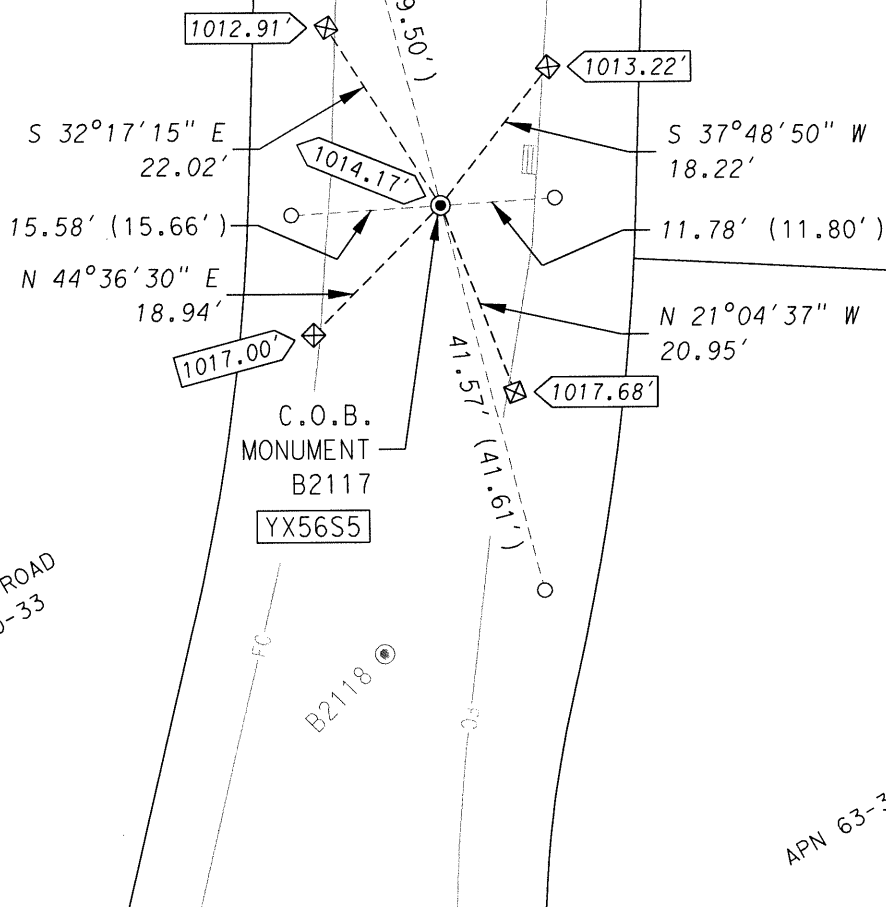
PARK HILLS  
23-M-688  
CONTRA COSTA  
CO. RECORDS

HILLVIEW  
ROAD

1149 HILLVIEW ROAD  
APN 63-3150-15-2

1155 WOODSIDE ROAD  
APN 63-3150-33

APN 63-3150-16



### BASIS OF BEARING:

BEARING BASIS IS ASSUMED

### LEGEND:

- FOUND 1/4" PIN MONUMENT IN WELL
- ⊠ SET CUT CROSS ON TOP OF CONCRETE CURB
- × FOUND CUT CROSS FROM CR 4959
- FOUND 5/8" REBAR WITH PLASTIC CAP FROM CR 4959

- 1014.17' MONUMENT ELEVATION FROM CR 4959
- XXXX.XX' REFERENCE POINT ELEVATION (ESTABLISHED WITH DIGITAL LEVEL)
- ( ) RECORD INFORMATION FROM CR 4959 (BK 45 PG 7) A.C.R.
- YX56S5 ALAMEDA COUNTY MONUMENT IDENTIFICATION NUMBER

SCALE: 1" = 20'