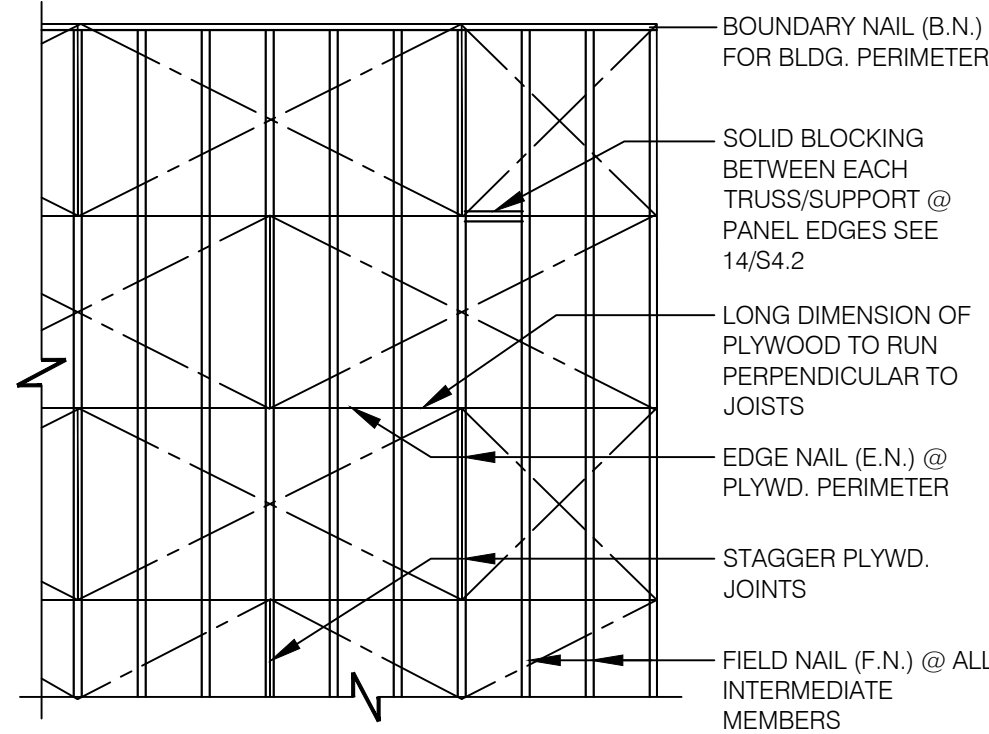


CONNECTION TYPE:

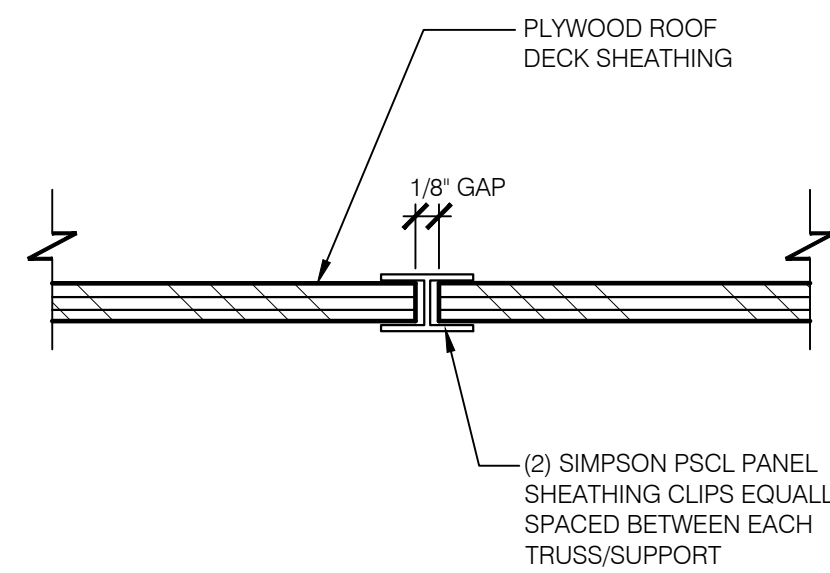
- | | |
|---|---|
| 1. JOIST TO SILL OR GIRDER, TOENAIL | (3-8d) |
| 2. BRIDGING TO JOIST, TOENAIL EACH END | (2-8d) |
| 3. 1"x6" (25MMx152MM) SUBFLOOR OR LESS TO JOIST, FACE NAIL | (2-8d) |
| 4. WIDER THAN 1" X 6" (25MMx152MM) SUBFLOOR TO JOIST, FACE NAIL | (3-8d) |
| 5. 2" (52MM) SUBFLOOR TO GIRDER, BLIND AND FACE NAIL | (2-16d) |
| 6. SOLE PLATE TO JOIST OR BLOCKING, TYPICAL FACE NAIL | (16d @ 16" O.C.) |
| 7. SOLE PLATE TO JOIST OR BLOCKING, AT BRACED W. PANELS | (3-16d PER 16') |
| 8. TOP PLATE TO STUD, END NAIL | (2-16d) |
| 9. STUD TO SOLE PLATE | (2-16d END NAIL) |
| 10. DOUBLE STUDS, FACE NAIL | (16d @ 24" O.C.) |
| 11. DOUBLE TOP PLATES, TYPICAL FACE NAIL | (16d @ 16" O.C.) |
| 12. DOUBLE TOP PLATES, LAP SPLICE | (8-16d) |
| 13. BLOCKING BETWEEN JOISTS OR RAFTERS TO TOP PLATE, TOENAIL | (3-8d) |
| 14. RIM JOIST TO TOP PLATE, TOENAIL | (8d @ 6" O.C.) |
| 15. TOP PLATES, LAPS AND INTERSECTIONS, FACE NAIL | (2-16d) |
| 16. CONTINUOUS HEADER, TWO PIECES | (16d @ 16" O.C. ALONG EDGE) |
| 17. CEILING JOISTS TO PLATE, TOENAIL | (3-8d) |
| 18. CONTINUOUS HEADER TO STUD, TOENAIL | (4-8d) |
| 19. CEILING JOISTS, LAP OVER PARTITIONS, FACE NAIL | (3-16d) |
| 20. CEILING JOISTS TO PARALLEL RAFTERS, FACE NAIL | (3-16d) |
| 21. RAFTER TO PLATE, TOENAIL | (3-8d) |
| 22. 1" (25MM) BRACE TO EACH STUD AND PLATE, FACE NAIL | (2-8d) |
| 23. 1"x8" SHEATHING OR LESS TO EACH BEARING, FACE NAIL | (2-8d) |
| 24. WIDER THAN 1"x8" SHEATHING TO EACH BEARING, FACE NAIL | (3-8d) |
| 25. BUILT-UP CORNER STUDS | (16d @ 24" O.C.) |
| 26. 2" PLANKS | (2-16d AT EACH SPLICE) |
| 27. 2x6 BOX BEAM / HEADER | (12d @ 12" O.C.) |
| 28. BUILT-UP GIRDER AND BEAMS | (20d @ 32" O.C. AT TOP & BOTTOM AND STAGGERED 2-20d AT ENDS AND AT EACH SPLICE) |

NAILING:



- NOTES:
1. MIN. PLYWD. SHT. SIZE SHALL BE 2'-0" X 4'-0".
 2. MIN. 3/8" NAILING EDGE DISTANCE.
 3. EDGE NAIL (E.N.) O/ BEAMS AND AROUND ALL OPENINGS.
 4. 19/32" ROOF SHEATHING w/ 10d BNDY NAILING @ 6"oc w/ BLKG

ROOF NAILING PLAN N.T.S. 13

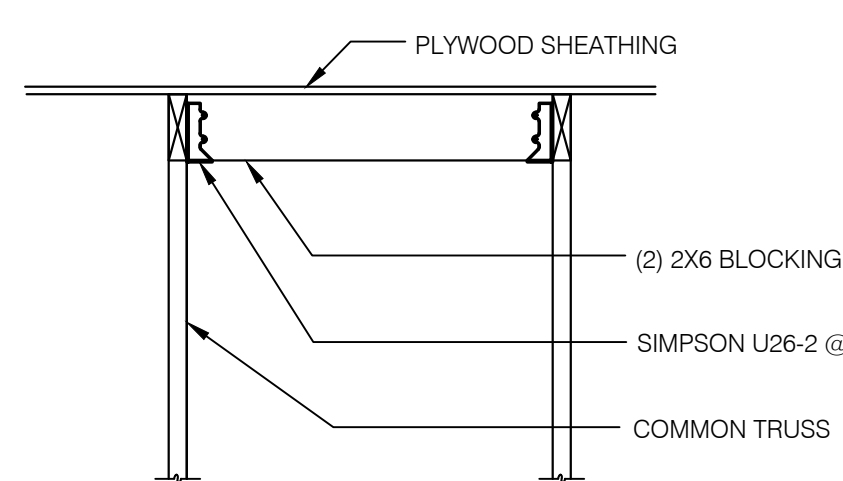


PLYWOOD EDGE BLOCKING N.T.S. 14

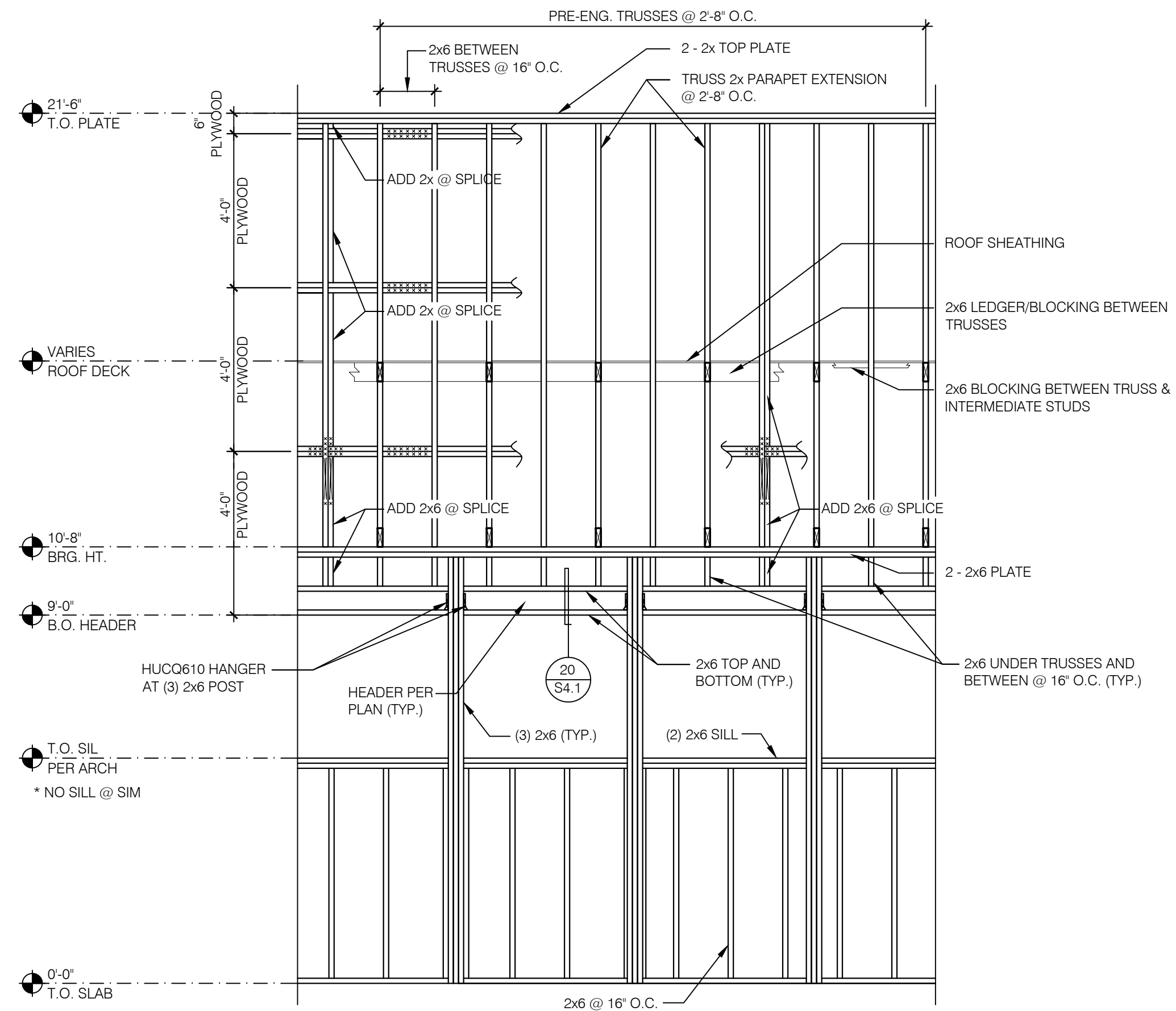
EQUIPMENT	DESIGN WEIGHT
HVAC UNIT - RTU-1	★ 1700 lbs.
HVAC UNIT - RTU-2	★ 2800 lbs.
HVAC UNIT - RTU-1 (ALT)	★ 1750 lbs.
HVAC UNIT - RTU-2 (ALT)	★ 1900 lbs.
EXHAUST FAN - EF-1	★ 200 lbs.
EXHAUST FAN - EF-2	★ 70 lbs.
HOOD #1 - TACO BELL	400 lbs.
ICE CONDENSERS	200 lbs.
FREEZER CONDENSER	300 lbs.
COOLER CONDENSER	300 lbs.
MUZAK DISH, SLED & BALLAST - ALLOW FOR LOCATION ANYWHERE ON ROOF.	1,087 lbs.

- ★ A. ALL DESIGN WEIGHTS INCLUDE CURB.
B. COORDINATE WEIGHTS WITH HVAC UNIT SCHEDULE 1/M1.0.

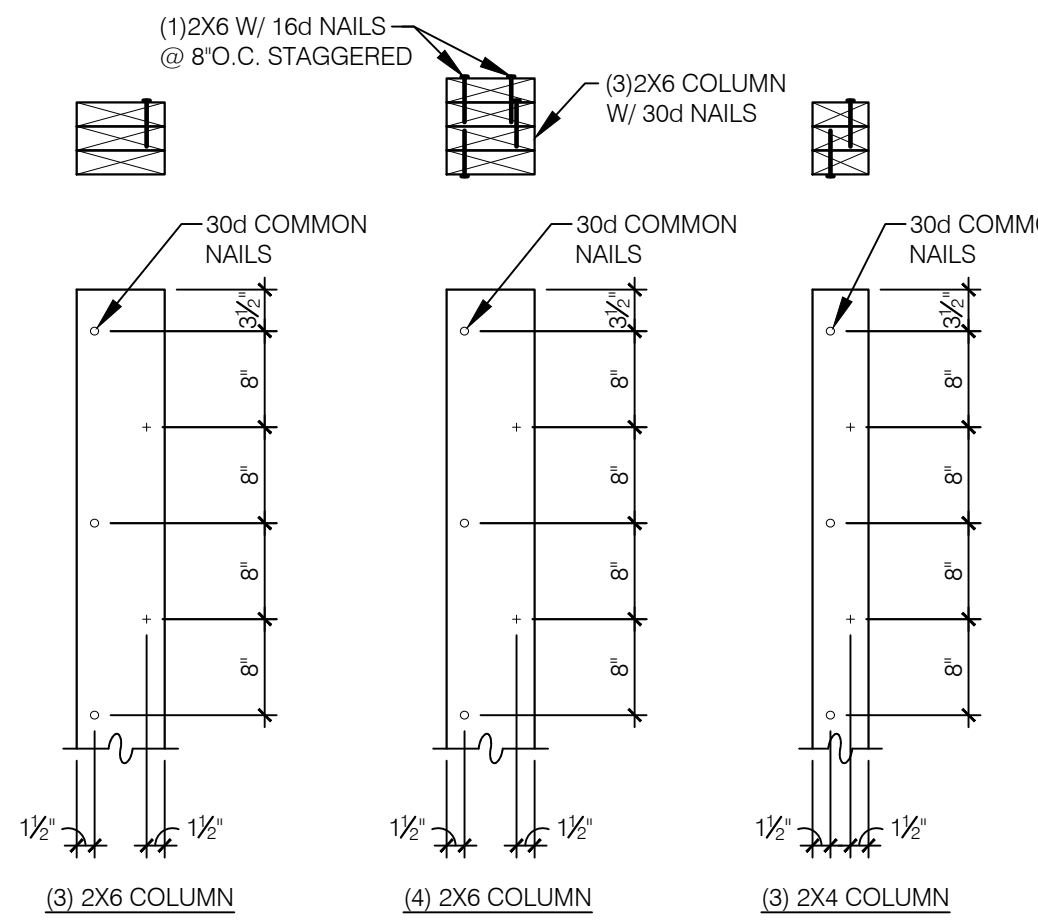
ROOF TOP EQUIPMENT WEIGHTS N.T.S. 9



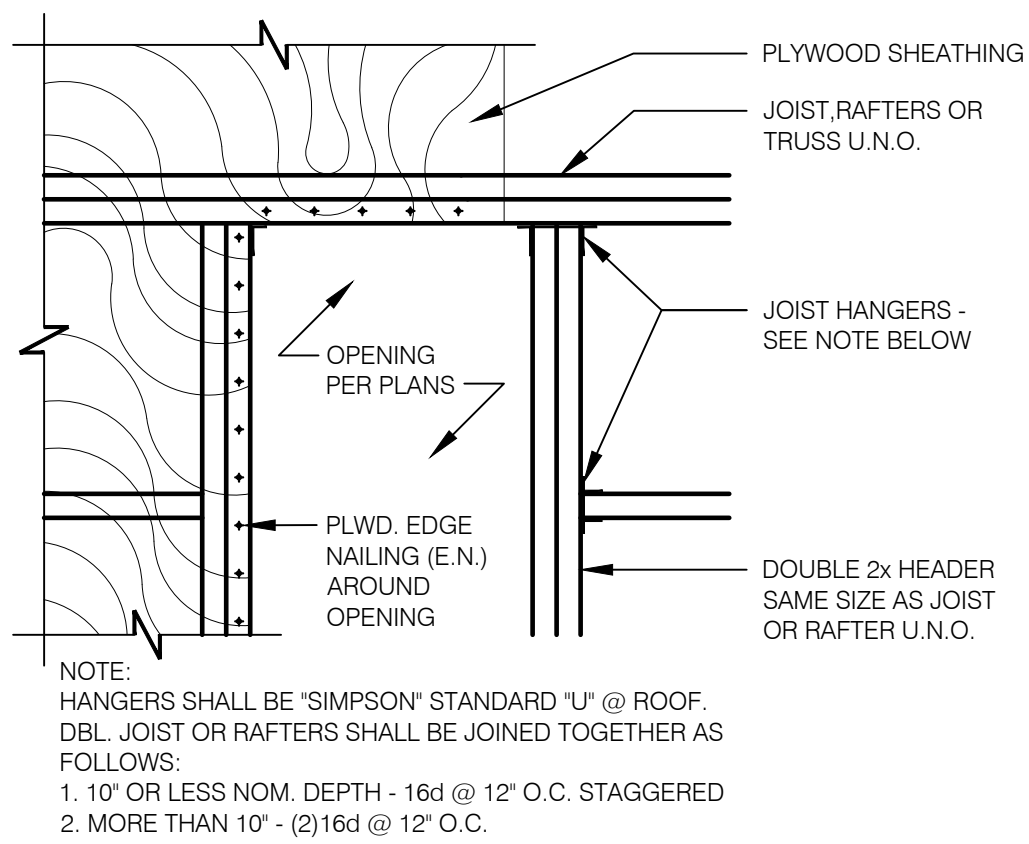
ROOF OPENING DETAIL N.T.S. 10



WALL FRAMING DETAIL 3/8" = 1'-0" 2



BUILT-UP 2X COLUMNS N.T.S. 19

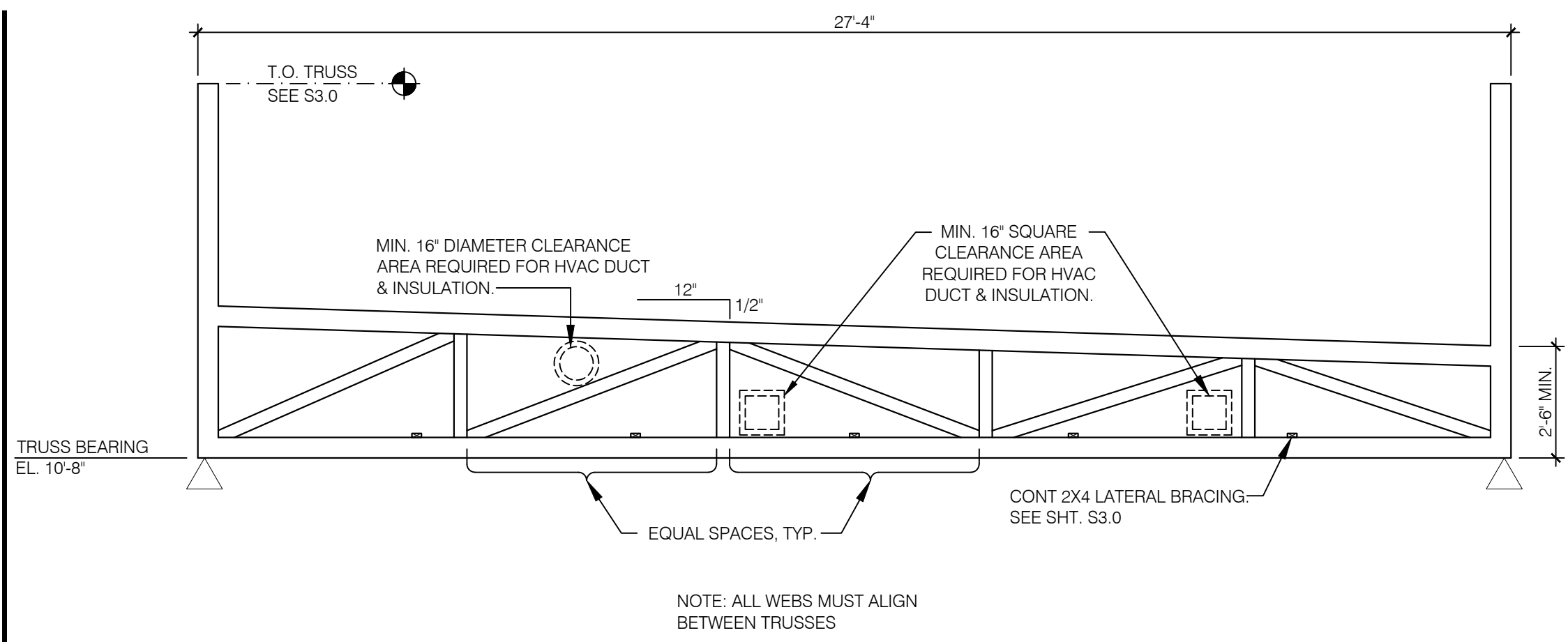


TYPICAL ROOF OPENING 1" = 1'-0" 15

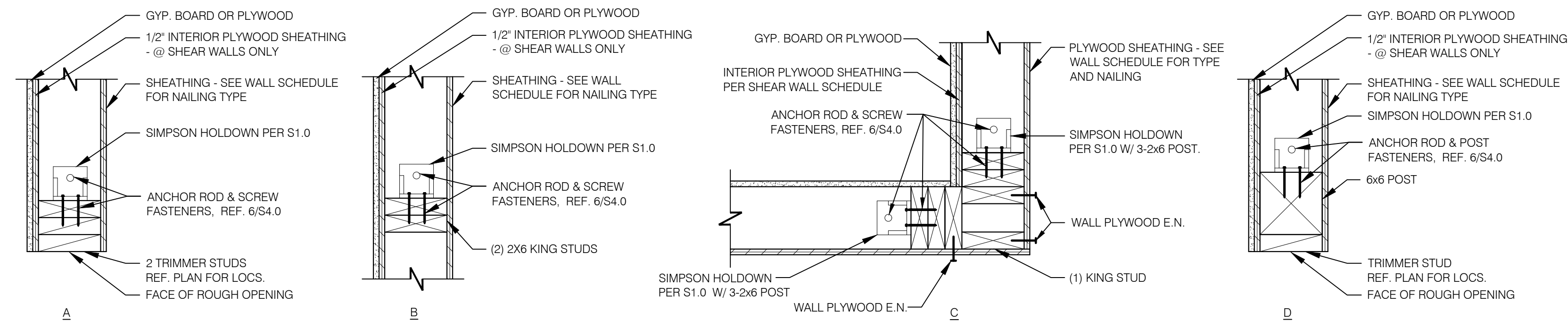
TRUSS TYPES	SINGLE TRUSS DESIGNATION	DOUBLE TRUSS DESIGNATION	BEARING POINT	COMMENTS
T1 - T27	X	XX		SEE NOTE 1.

- NOTES:
1. HOLDOWN CONNECTORS SHALL BE SPECIFIED BY SITE SPECIFIC ARCHITECT/ ENGINEER BASED UPON LOADING DATA PROVIDED BY TRUSS DESIGNER.
 2. PROVIDE SHOP DRAWINGS PRIOR TO FABRICATION.
 3. TRUSS MEMBER SIZES ARE FOR REFERENCE ONLY. ACTUAL SIZE SHALL BE DETERMINED BY TRUSS MANUFACTURER BASED ON ACTUAL LOAD CONDITIONS AND CODES.

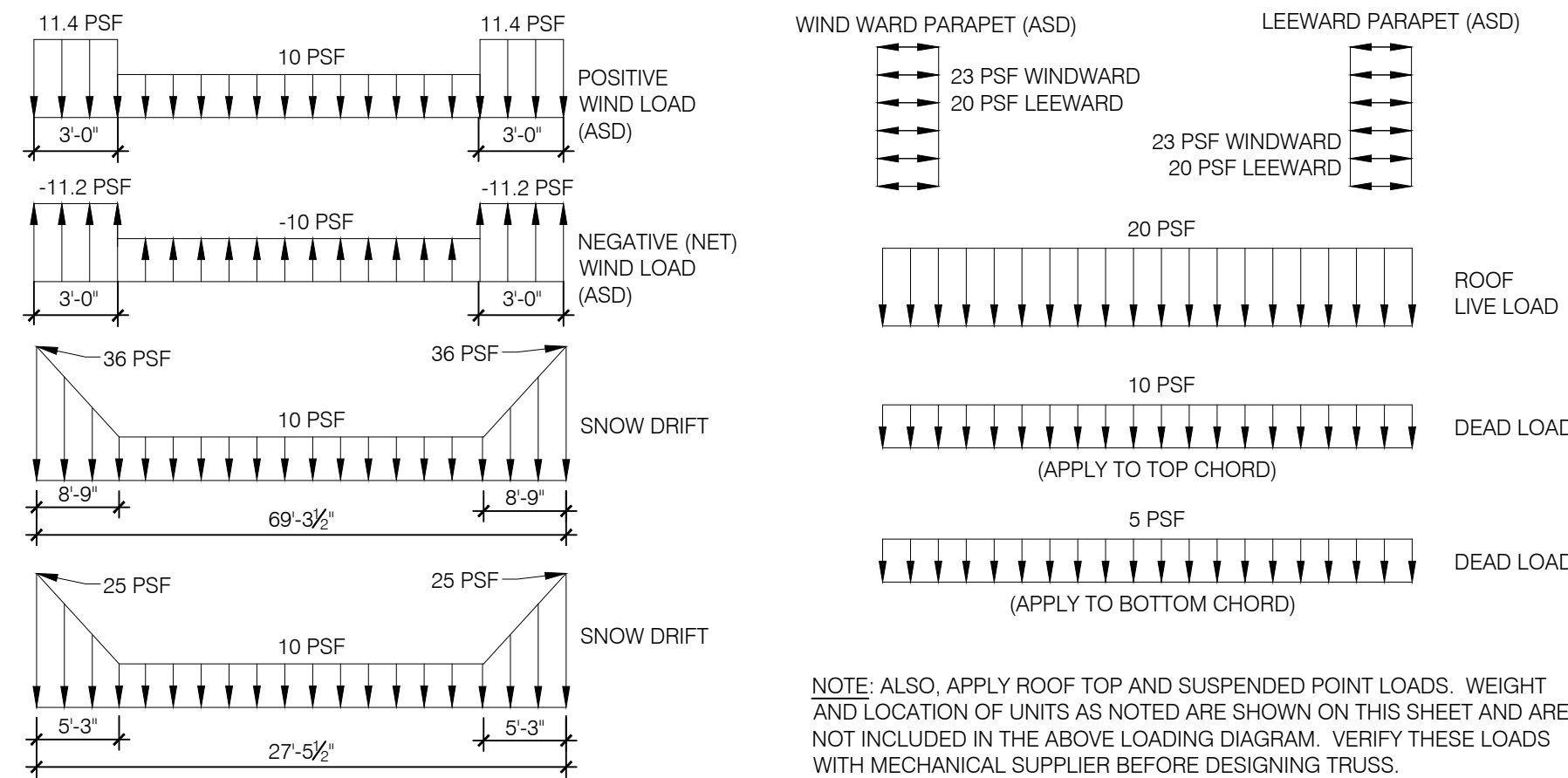
TRUSS SCHEDULE N.T.S. 11



TRUSS ELEVATION 1/4" = 1'-0" 3



HOLDOWN DETAILS 1 1/2" = 1'-0" 8



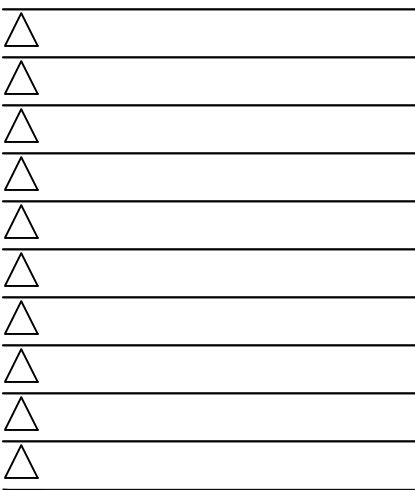
TRUSS DESIGN CRITERIA N.T.S. 4



1232 washington ave.
suite 310
st. louis, mo 63103
p: 314.241.6262
f: 314.241.6263
www.m2astudio.com



PERMIT/CONSTRUCTION SET
DATE: APRIL 23, 2018



CONTRACT DATE: XX.XX.XX
BUILDING TYPE: EXPLORER 40
PLAN VERSION: DECEMBER 2017
SITE NUMBER: XXX-XXX
STORE NUMBER: XXXXX

TACO BELL

20 W. FRANKLIN STREET
HARTWELL, GA 30643



EXPLORER
MEDIUM40

STRUCTURAL
DETAILS
ROOF

S4.2

PLOT DATE: