

LAKEVIEW VILLAS UNIT 1

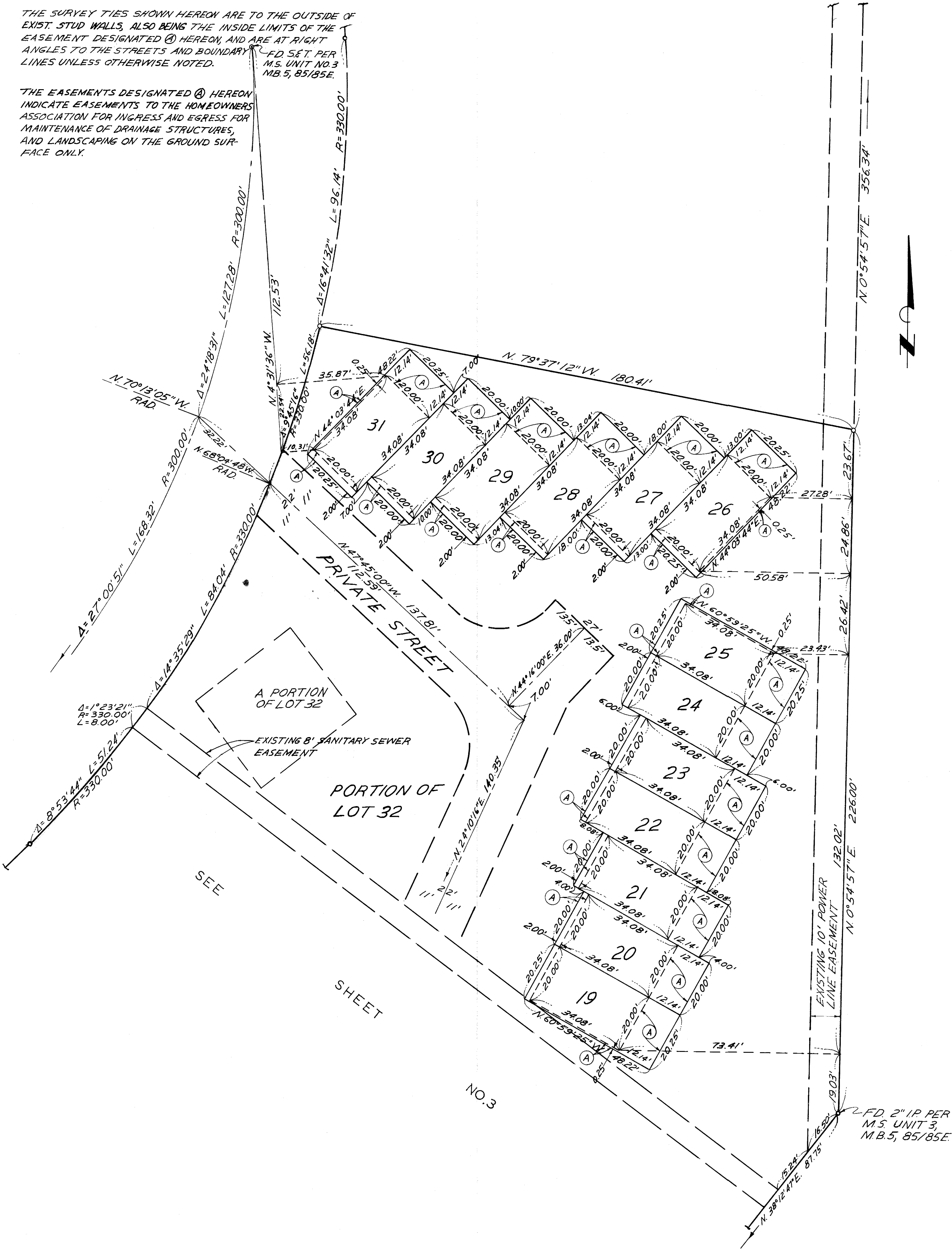
IN THE UNINCORPORATED TERRITORY OF MONO COUNTY, CALIF.

NOTES

LOT 32 IS THE LAND AND REAL PROPERTY INCLUDED WITHIN THE BLUE BORDER OF THIS SUBDIVISION EXCEPT THEREFROM THOSE PORTIONS INCLUDED WITHIN LOTS 1 THRU 31 INCLUSIVE.

THE SURVEY TIES SHOWN HEREON ARE TO THE OUTSIDE OF EXIST. STUD WALLS, ALSO BEING THE INSIDE LIMITS OF THE EASEMENT DESIGNATED (A) HEREON, AND ARE AT RIGHT ANGLES TO THE STREETS AND BOUNDARY LINES UNLESS OTHERWISE NOTED.

THE EASEMENTS DESIGNATED (A) HEREON INDICATE EASEMENTS TO THE HOMEOWNERS ASSOCIATION FOR INGRESS AND EGRESS FOR MAINTENANCE OF DRAINAGE STRUCTURES, AND LANDSCAPING ON THE GROUND SURFACE ONLY.



107-Page 15-C