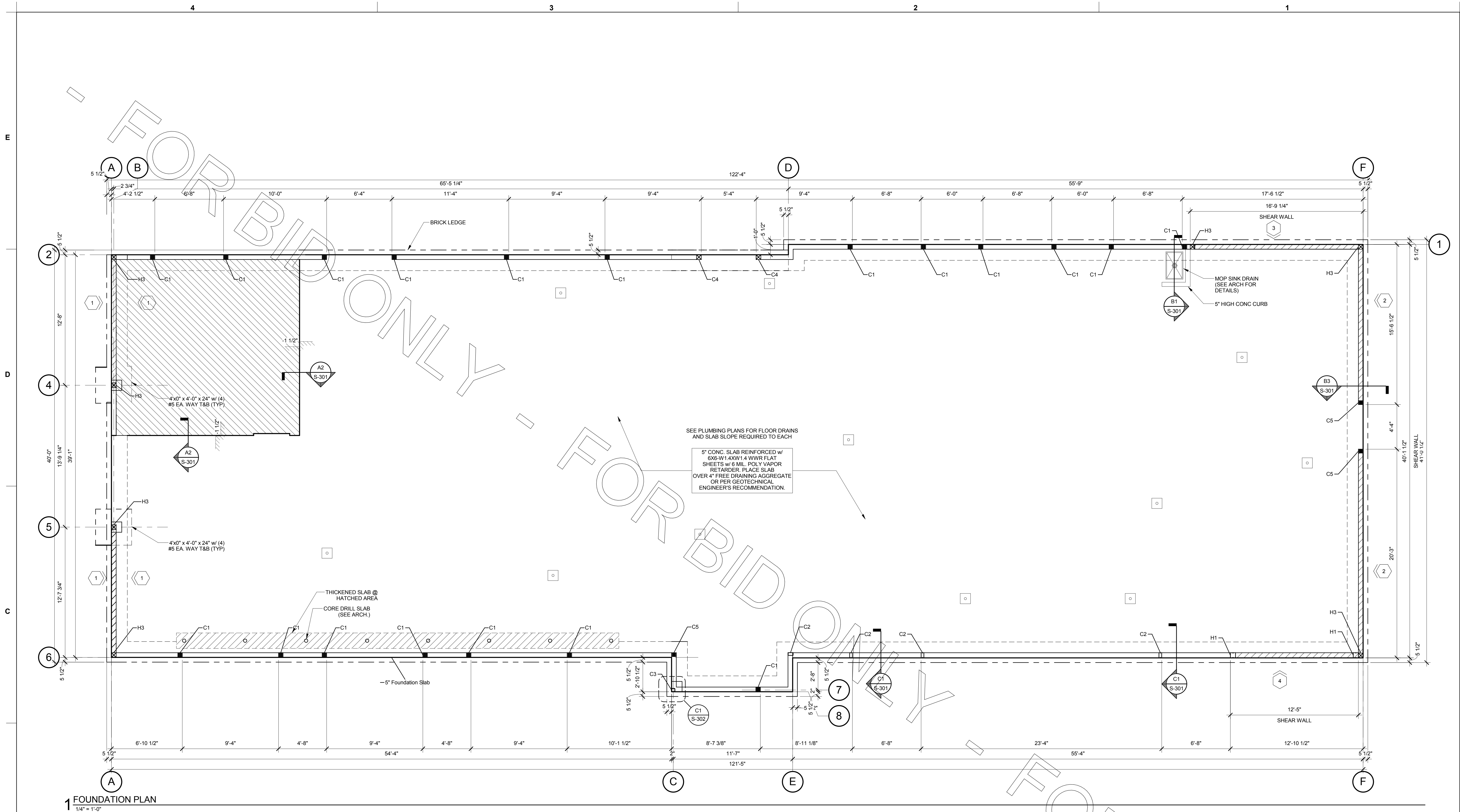


5/8/2018 3:15:52 PM



COLUMN SCHEDULE - LARGE				
MARK	TYPE	SIZE	COLUMN BASE	
C1	LVL	5 1/4x5 1/2 POSTS	HDU4-SDS2.5	
C2	METAL - LIGHT GAUGE	(2)600S162.54 (BOXED)	SHDU9	
C3	A500	HSS4x4x3/8	8\"/>	
C4	SYP	6x6 SYP POST	HDU4-SDS2.5	
C5	SYP	(3) 2x6 BUILT UP COLUMN	HDU8-SDS2.5	

2 COLUMN SCHEDULE  
N.T.S.

SHEAR WALL SCHEDULE						
SYMBOL	PLYWOOD	FASTENER	MINIMUM PENETRATION OF FASTENER	FASTENER SPACING		REFERENCE DETAIL
				PANEL EDGES	FIELD	
1	1/2\"/>	10d NAIL	1 1/2\"/>	4\"/>	12\"/>	C4/S-302
2	1/2\"/>	10d NAIL	1 1/2\"/>	4\"/>	12\"/>	D4/S-302
3	1/2\"/>	10d NAIL	1 1/2\"/>	6\"/>	12\"/>	D4/S-302
4	1/2\"/>	#10-16 SCREW	N/A	6\"/>	12\"/>	D4/S-302

NOTES:  
1. PROVIDE 1/4x4 1/2x4 1/2 STEEL PLATE WASHER & CUT WASHERS AT ANCHOR BOLTS.  
2. PROVIDE CUT WASHERS AT ANCHOR BOLTS.  
3. PROVIDE 3x6 BLOCKING @ ALL 3x6 WALLS @ PLYWOOD SEAMS TO PREVENT SPLITTING.  
4. 3x6 FRAMING REQUIRED WHEN 10d NAILS USED @ 3\"/>

3 SHEAR WALL SCHEDULE  
N.T.S.

SHEARWALL HOLDOWN SCHEDULE - LARGE		
MARK	POST	HOLDOWN
H1	(2)600S200-68 (BOXED)	SHDU9
H3	6x6 SYP POST	HDU8-SDS2.5

4 HOLDOWN SCHEDULE  
N.T.S.

LEGEND:	
1	INDICATES SHEAR WALL. SEE SHEAR WALL SCHEDULE
	SHEAR WALL #. SEE SHEAR WALL SCHEDULE
	INDICATES FLOOR DRAIN (FOR REFERENCE ONLY). SEE P-221 FOR EXACT LOCATIONS. SLOPE SLAB TO DRAIN FROM DRAIN PERIMETER PER PLUMBING GUIDELINES. SEE A1/S-301 FOR DETAIL.
	PLUMBING & EQUIPMENT DRAINS (FOR REFERENCE ONLY). SEE P-221 FOR EXACT LOCATIONS.
	CLEANOUT (FOR REFERENCE ONLY). SEE PLUMBING DRAWINGS.

5 LEGEND  
N.T.S.

FOUNDATION NOTES:  
1. BOTTOM OF EXTERIOR FTG. = 1'-6" BELOW FINISH GRADE ELEV. MIN. U.N.O.  
2. SEE ARCH. DWG FOR ANY WALL LOCATIONS AND/OR DIMENSIONS NOT SHOWN.  
3. SEE DETAIL D4/S-301 FOR SLAB CONTROL JOINTS AND 1/S-211 FOR CONTROL JOINT LAYOUT.  
4. SEE WALL STUD PLAN ON 2/S-231 FOR STUD SPACING.  
5. ALL SAW CUT CONTROL JOINTS SHALL BE COMPLETED WITHIN 12 HOURS AFTER FINISHING SLAB WITHOUT DISLODGING AGGREGATE.  
6. ALL ANCHORS, CLIPS, STRAPS, ETC. WHICH ARE IN CONTACT WITH COPPER BASED TREATED WOOD, SUCH AS ACO, CBA OR SBX, AND ARE LESS THAN 3/8" THICK, SHALL BE SIMPSON ZMAX (G185), STAINLESS STEEL OR AN ENGINEERED APPROVED EQUAL.  
7. ALL FASTENERS WHICH ARE IN CONTACT WITH COPPER BASED TREATED WOOD, SUCH AS ACO, CBA OR SBX, AND ARE LESS THAN 3/8" DIAMETER SHALL BE G185 (A HEAVY COATED GALVANIZED) STAINLESS OR AN ENGINEERED APPROVED EQUAL.  
8. FOUNDATION DESIGN IS BASED ON THE FOLLOWING ASSUMPTIONS: A GEOTECHNICAL ENGINEER SHALL BE EMPLOYED PRIOR TO THE START OF CONSTRUCTION TO INVESTIGATE SUBSURFACE CONDITIONS. IF THE GEOTECHNICAL REPORT INDICATES THAT THESE ASSUMPTIONS LISTED BELOW ARE INCORRECT PLEASE NOTIFY ENGINEER IMMEDIATELY.  
9. INDIVIDUAL FOOTINGS ARE DESIGNED TO BEAR ON UNIFORM SOIL CAPABLE OF SUPPORTING 2,000 PSF. CONTINUOUS FOOTINGS ARE DESIGNED TO BEAR ON SOIL CAPABLE OF SUPPORTING 2,000 PSF. DESIGN ASSUMES DIFFERENTIAL AND TOTAL SETTLEMENT ARE WITHIN ACCEPTED TOLERANCES FOR THE TYPE OF CONSTRUCTION USED. LIGHT POLE FOOTINGS ARE DESIGNED BASED ON A MINIMUM OF xxx PSF/FT SOIL PASSIVE PRESSURE.  
10. THE SOIL BEARING CAPACITY AND CONSISTENCY SHALL BE VERIFIED FOR THE BUILDING LIMITS BY A REGISTERED GEOTECHNICAL ENGINEER WHEN FOUNDATION EXCAVATIONS HAVE BEEN CARRIED DOWN TO THE PROPOSED ELEVATIONS. THE BOTTOM OF ALL EXTERIOR FOOTINGS SHALL BE 1'-6" MINIMUM BELOW FINISHED GRADE.  
11. WHERE FOOTING EXCAVATIONS ARE TO REMAIN OPEN AND MAY BE EXPOSED TO RAINFALL, THE EXCAVATIONS SHALL BE UNDERCUT AND A 4 INCH THICK MUD MAT OF 2000 PSI CONCRETE SHALL BE PLACED IN THE BOTTOM TO PROTECT THE BEARING SOILS PER GEOTECHNICAL ENGINEER RECOMMENDATIONS.

6 FOUNDATION NOTES  
N.T.S.



Chick-fil-A

Chick-fil-A  
5200 Buffington Road  
Atlanta, Georgia 30349-2998

INTERPLAN

ARCHITECTURE  
ENGINEERING  
INTERIOR DESIGN  
PROJECT MANAGEMENT

604 COURTLAND STREET  
SUITE 100  
ORLANDO, FLORIDA 32804  
PH 407.645.5008  
FX 407.629.9124



BRITT, PETERS  
AND ASSOCIATES  
INC.  
consulting engineers

999 WATERSIDE DRIVE  
SUITE 2202  
NORFOLK, VA 23510  
PH 757.955.5710  
BPA# 170624

SEAL:  
THIS DOCUMENT IS NOT FOR CONSTRUCTION  
UNLESS THE ARCHITECT'S OR ENGINEER'S  
SIGNATURE AND SEAL APPEAR BELOW

CHICK-FIL-A  
Woodlawn Square FSR  
1201 Johnson Ferry Road, Marietta, GA 30068

FSR# 00802

REVISION SCHEDULE

NO. DATE DESCRIPTION

CONSULTANT PROJECT # 2016.0430

PRINTED FOR BID

DATE 2017/12/19

DRAWN BY JNJ

Information contained on this drawing and in all digital files produced for above named project may not be reproduced in any manner without express written or verbal consent from authorized project representatives.

SHEET FOUNDATION PLAN

SHEET NUMBER

S-201L