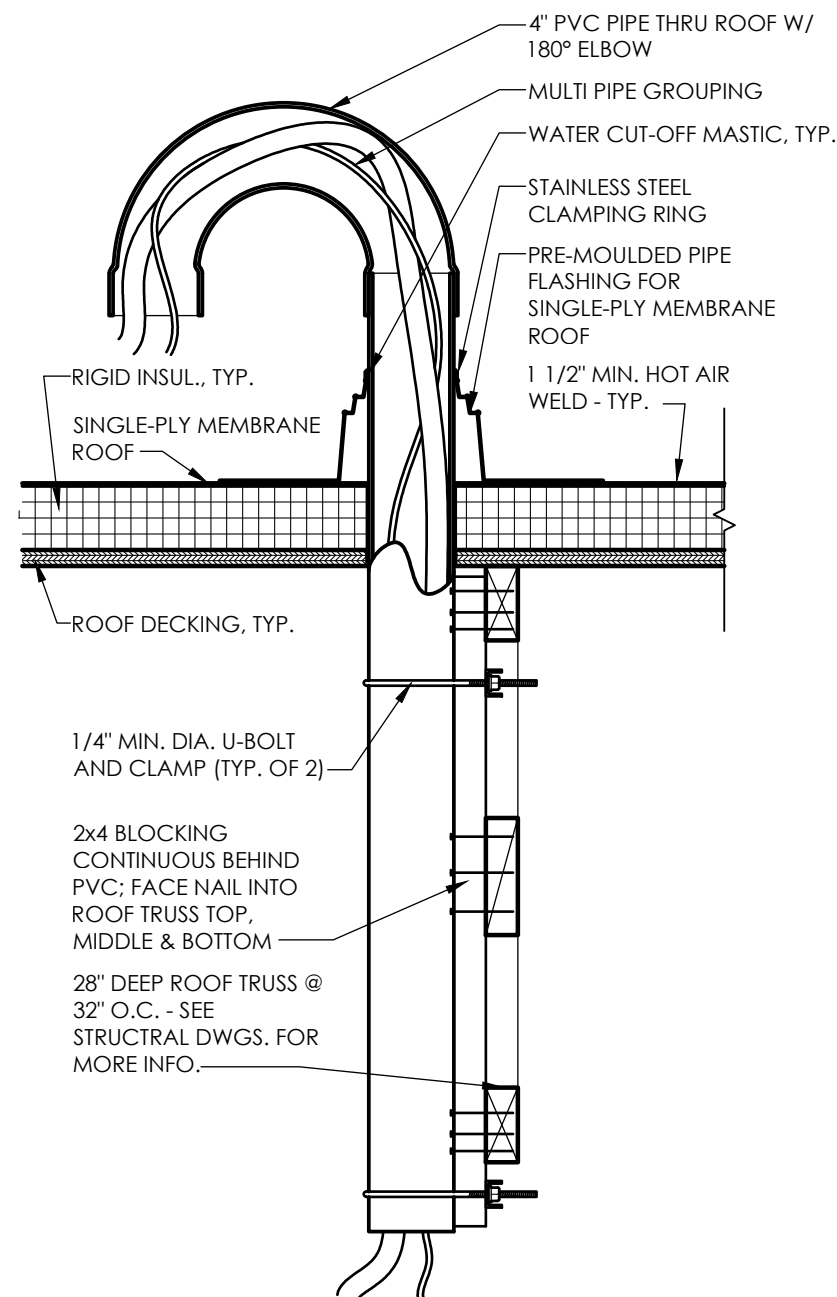
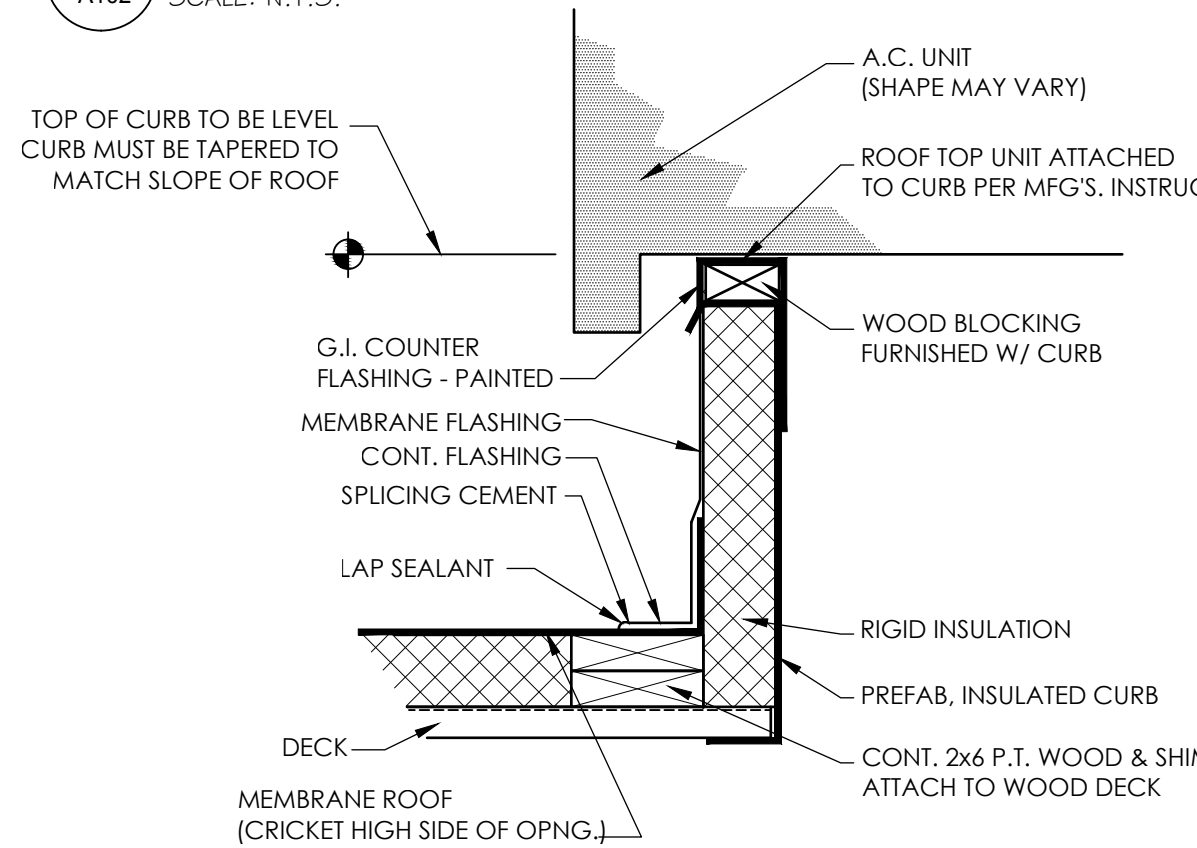


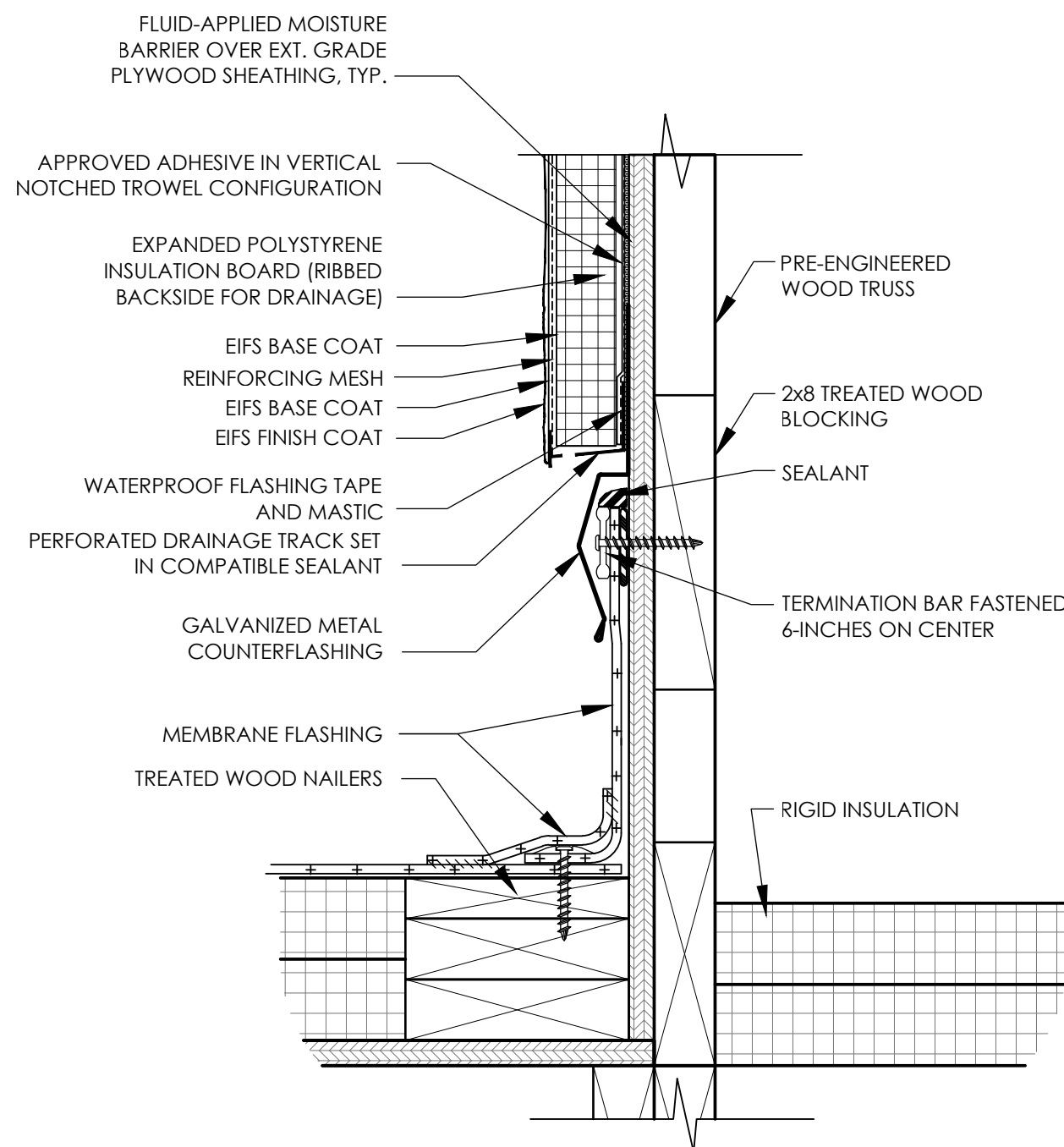
THESE PLANS ARE THE PROPERTY OF MRP DESIGN GROUP, INC. AND ARE SUBJECT TO FEDERAL COPYRIGHT LAWS. ANY USE OF SAME WITHOUT THE EXPRESS WRITTEN PERMISSION OF MRP DESIGN GROUP, INC. IS STRICTLY PROHIBITED.



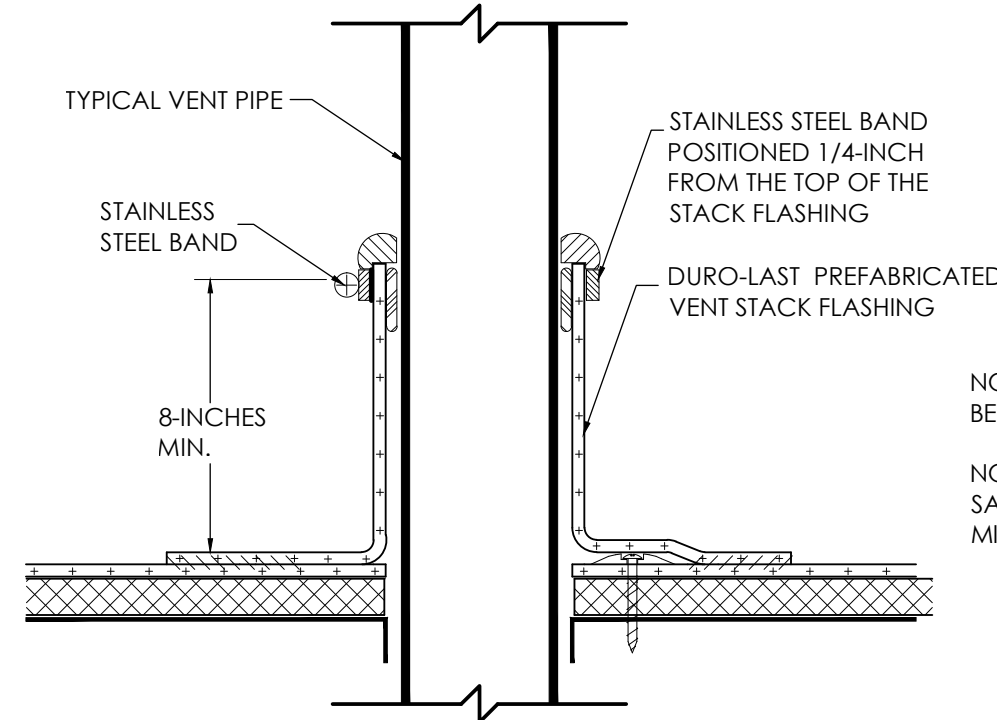
6 CONDUIT PENETRATION DETAIL
A102 SCALE: N.T.S.



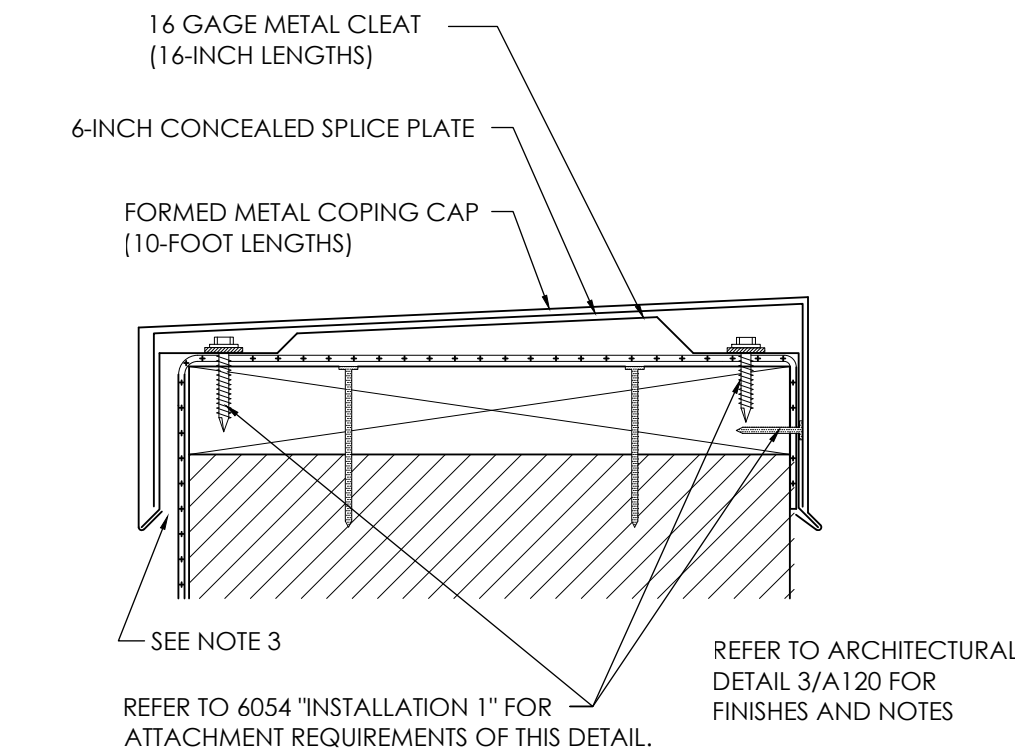
7 MECHANICAL CURB DETAIL
A102 SCALE: N.T.S.



8 ROOFING TRANSITION AT EIFS WALL
A102 SCALE: 3" = 1'-0"



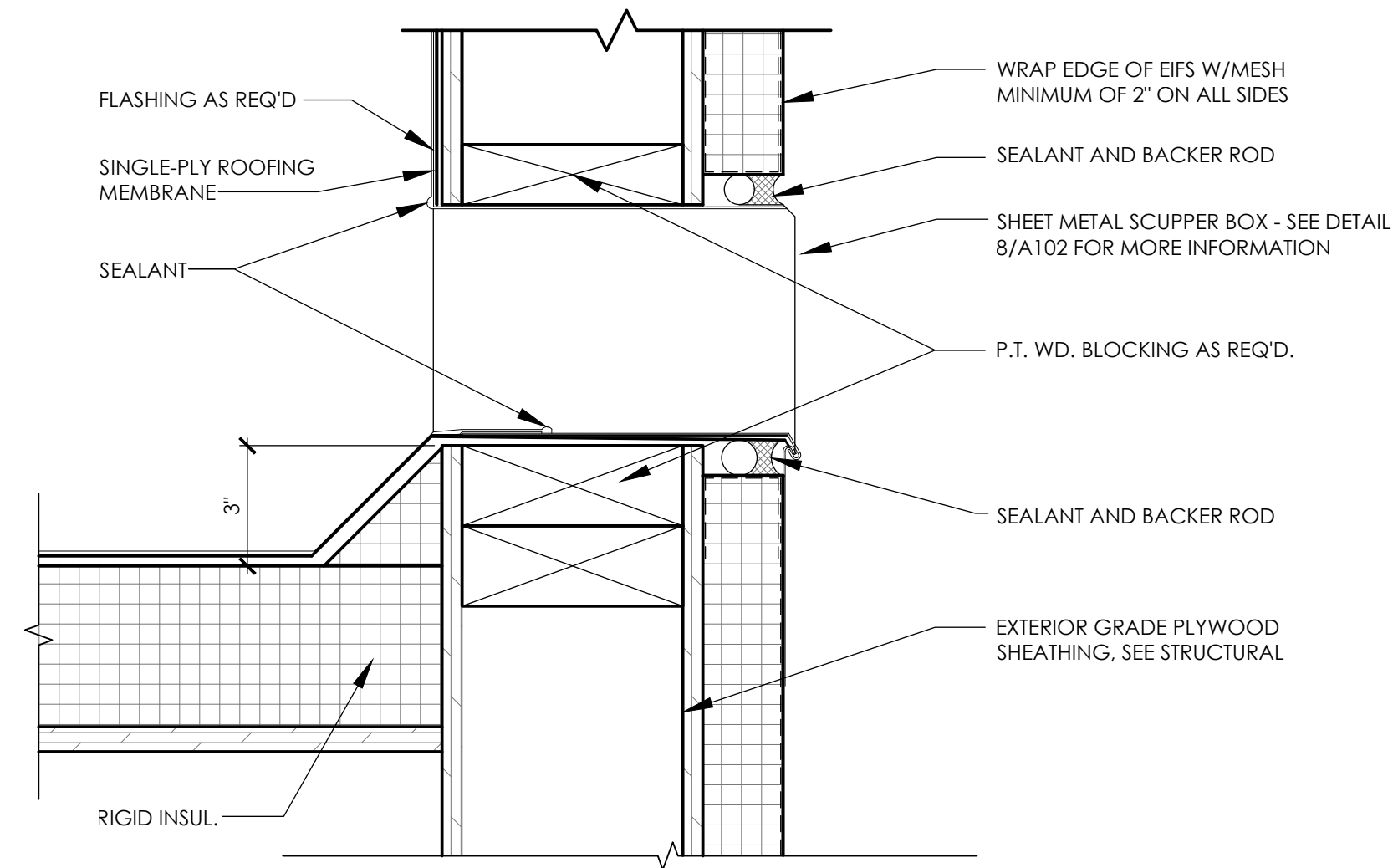
4 PIPE PENETRATION DETAIL
A102 SCALE: N.T.S.



- NOTE 1: ALL COPING CAP JOINTS MUST UTILIZE A 6-INCH CONCEALED SPLICE PLATE.
- NOTE 2: ALL JOINTS ARE TO BE SEALED WITH AN APPROVED DURO-LAST SEALANT ON TOP OF THE SPLICE PLATE, ON BOTH SIDES OF THE JOINT. ALLOW A 1/4-INCH GAP BETWEEN COPING SECTIONS.
- NOTE 3: ON THE INSIDE EDGE OF THE COPING CAP BASE CLEAT, LEAVE A 3/8-INCH GAP BETWEEN THE CLEAT AND THE WALL TO ALLOW THE COPING CAP TO SNAP INTO PLACE.
- NOTE 4: ALL FASTENERS MUST PENETRATE INTO THE WOOD NAILER A MINIMUM OF 1 1/2-INCHES.

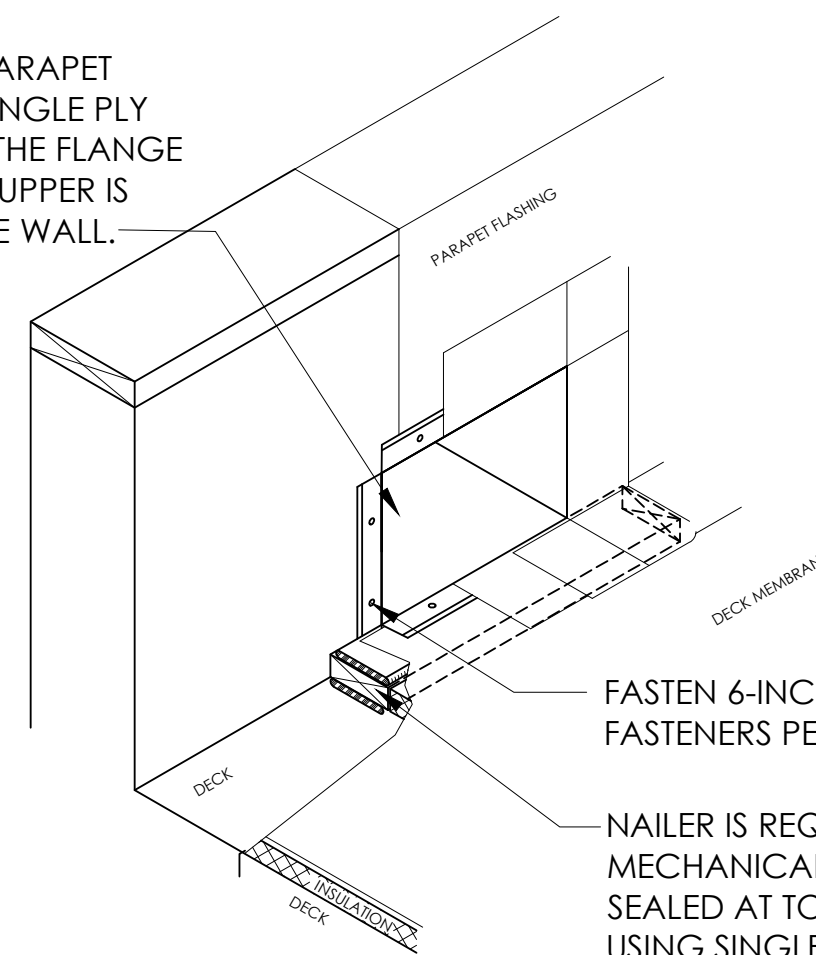
5 METAL COPING CAP DETAIL
A102 SCALE: N.T.S.

- NOTE 1: IF A LEAD FLASHING IS PRESENT ON THE PIPE, IT MUST BE REMOVED BEFORE A DURO-LAST STACK FLASHING IS INSTALLED.
- NOTE 2: MEMBRANE ATTACHMENT AROUND THE PENETRATION WILL BE THE SAME AS THE DECK MEMBRANE, MAX. 18-INCHES ON CENTER, AND A MINIMUM ONE PLATE/FASTENER PER FLASHING.

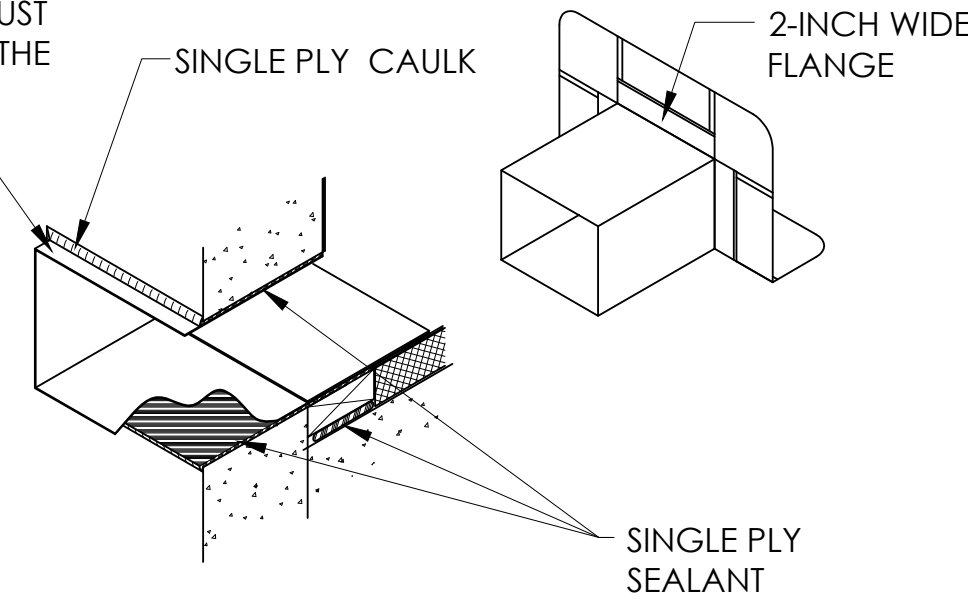


3 SCUPPER DETAIL - OVERFLOW - 14" W. X 8" H.
A102 SCALE: 3" = 1'-0"

BACK-SEAL THE PARAPET FLASHING WITH SINGLE PLY SEALANT WHERE THE FLANGE OF THE METAL SCUPPER IS ATTACHED TO THE WALL.

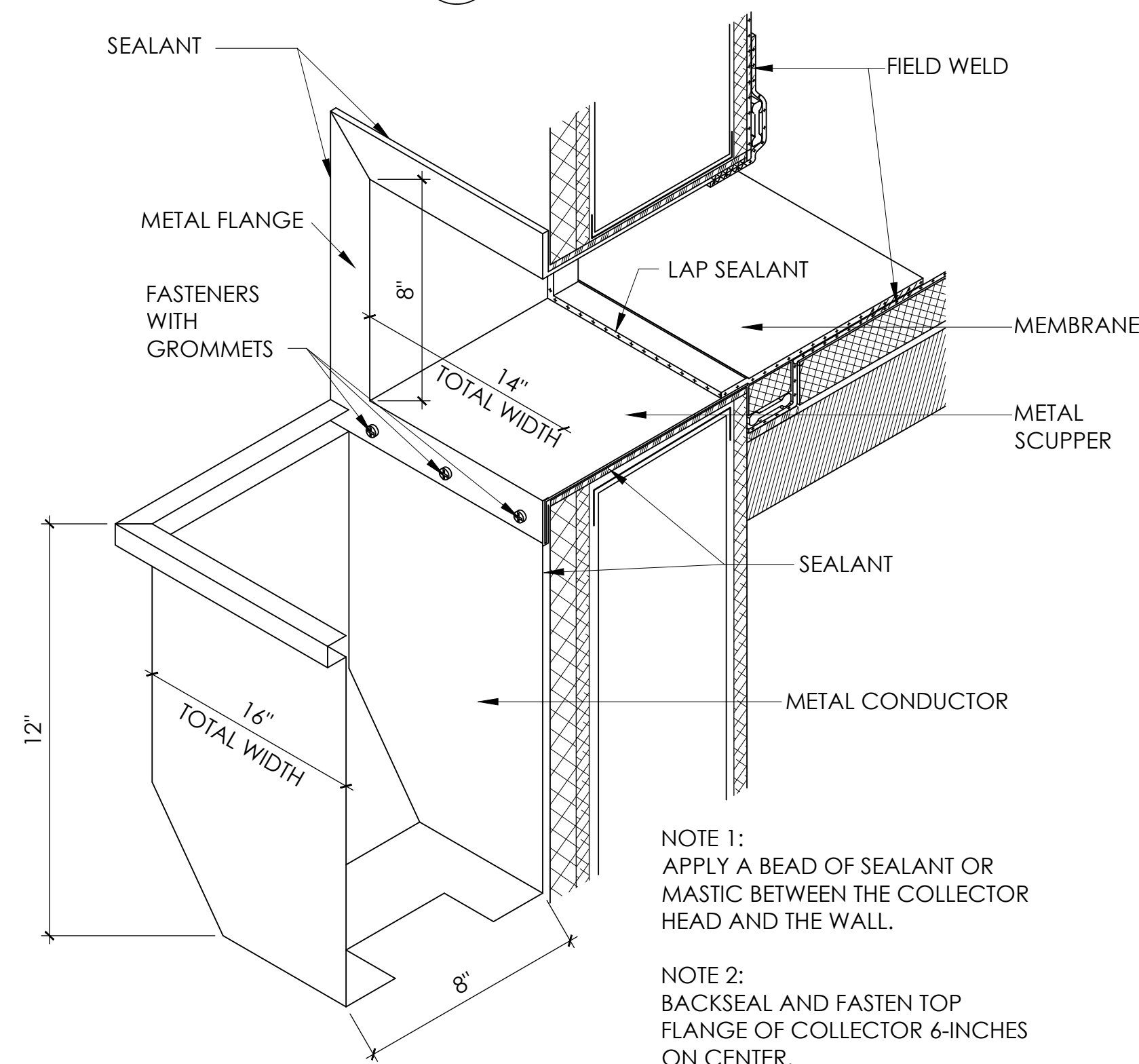


- NOTE 1: SINGLE SKIRT SCUPPER MUST EXTEND 1-INCH BEYOND THE WALL OPENING.



NOTE: BOTTOM OF ROOF OVERFLOW SCUPPER AT 3' ABOVE ROOF LINE.

2 SCUPPER DETAILS
A102 SCALE: 3" = 1'-0"



- NOTE 1: APPLY A BEAD OF SEALANT OR MASTIC BETWEEN THE COLLECTOR HEAD AND THE WALL.
- NOTE 2: BACKSEAL AND FASTEN TOP FLANGE OF COLLECTOR 6-INCHES ON CENTER.

1 CONDUCTOR HEAD DETAILS - ROOF DRAINAGE
A102 SCALE: 3" = 1'-0"

ARCHITECT OF RECORD:

THOMAS E. MORGAN, JR.
ARCHITECT

423 FISCHER TRAIL
ELLIJAY, GEORGIA 30540

SEAL:



MRP
DESIGN GROUP

3450 Acworth Due West Road
Building 100, Suite 120
Kennesaw, Georgia 30144
P. 770-917-9172
F. 770-917-9470
www.mrpdesign.com

RELEASED FOR
CONSTRUCTION

ISSUES / REVISIONS:

DATE	DESCRIPTION
03.12.18	FOR PERMIT / CONSTRUCTION

DRAWN BY:

CHKD BY:

PROJECT DESCRIPTION:

NEW MULTI-TENANT RETAIL
BUILDING

PROJECT TITLE:

RETAIL BUILDING
CORNELIA, GEORGIA
FOR:
JETS ASSOCIATES, LTD

SHEET TITLE:

ROOF DETAILS

PROJECT NO: 17061

A102