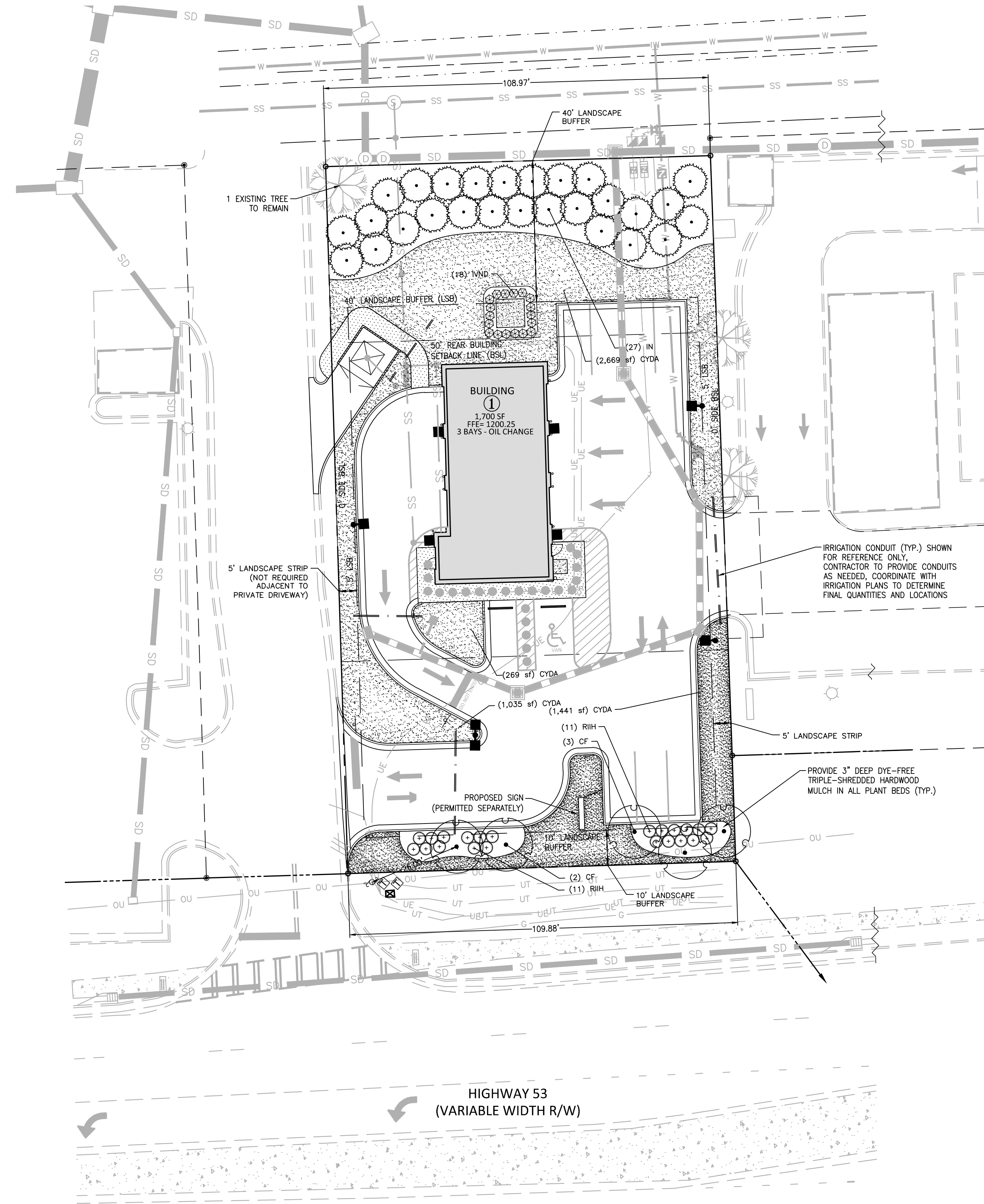


I:\Projects\NTR21002\04-Production\Engineering\Construction Documents\Current Drawings\NTR21002X-LANDSCAPE.dwg, 12/14/2021, 3:38:25 PM, Lauren McCall

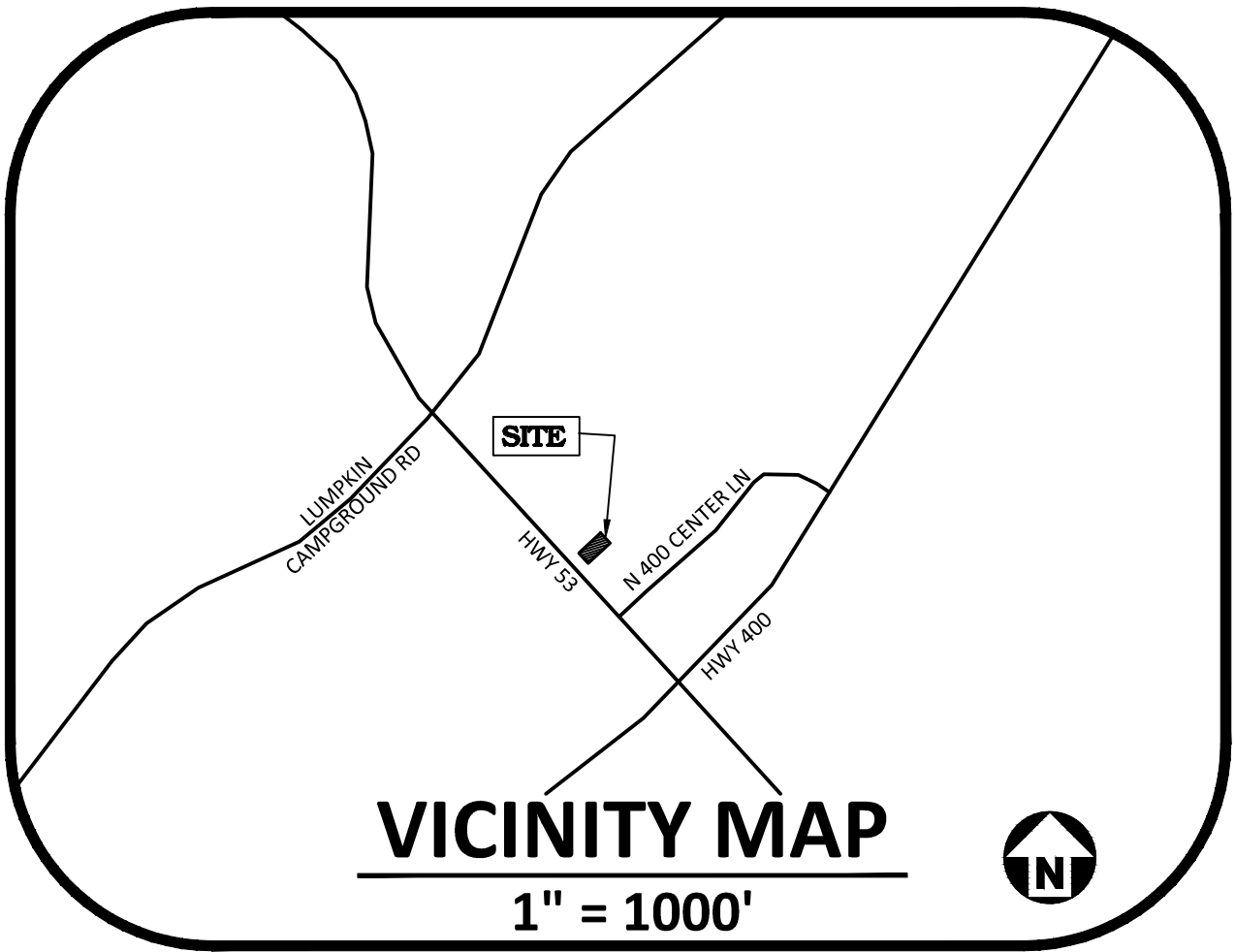


PLANT SCHEDULE

TREES	CODE	QTY	COMMON NAME	BOTANICAL NAME	CAL	HEIGHT	REMARKS
	CF	5	Flame Eastern Redbud	Cercis canadensis 'Flame'	3"	min	
	IN	27	Nellie R. Stevens Holly	Ilex x 'Nellie R. Stevens'	-	6' min	
EVERGREEN SHRUBS	CODE	QTY	COMMON NAME	BOTANICAL NAME	HEIGHT	SPACING	REMARKS
	IVND	18	Dwarf Yaupon	Ilex vomitoria 'Nana'	12"		
	RIIH	22	Indian Hawthorn	Rhaphiolepis indica	18"		
GROUND COVERS	CODE	QTY	COMMON NAME	BOTANICAL NAME	CQNT	HEIGHT	REMARKS
	CYDA	5,414 sf	Bermuda 419	Cynodon dactylon	Sod		

LANDSCAPE NOTES

- ALL MATERIALS AND METHODS OF CONSTRUCTION SHALL BE IN ACCORDANCE WITH DAWSON COUNTY AND THE STATE OF GEORGIA STANDARDS AND SPECIFICATIONS.
- CONTRACTOR IS RESPONSIBLE FOR THE SITE INSPECTION BEFORE LANDSCAPE CONSTRUCTION AND INSTALLATION IN ORDER TO BECOME FAMILIAR WITH THE EXISTING CONDITIONS.
- LANDSCAPE CONTRACTOR IS RESPONSIBLE FOR LOCATING ALL UNDERGROUND UTILITIES BEFORE BEGINNING DEMOLITION OR INSTALLATION.
- CONTRACTOR SHALL NOTIFY LANDSCAPE ARCHITECT OF ANY DISCREPANCIES BETWEEN THE NOTES, SPECIFICATIONS, DRAWINGS OR SITE CONDITIONS FOR RESOLUTION PRIOR TO INSTALLATION.
- ANY DAMAGE TO UTILITIES SHALL BE REPAIRED AT THE CONTRACTOR'S EXPENSE.
- THIS PLAN IS FOR PLANTING PURPOSES ONLY. FOR INFORMATION REGARDING BUILDINGS, GRADING, WALLS, ETC., REFER TO ARCHITECTURE, SITE AND GRADING PLANS.
- VERIFICATION OF TOTAL PLANT QUANTITIES AS SHOWN IN THE PLANT SCHEDULE SHALL BE THE RESPONSIBILITY OF THE LANDSCAPE CONTRACTOR. ANY DISCREPANCIES SHALL BE BROUGHT TO THE ATTENTION OF THE LANDSCAPE ARCHITECT.
- CONTRACTOR TO ENSURE PROPER STABILIZATION AND SEEDING OF THE SITE IN ACCORDANCE WITH APPLICABLE REGULATIONS.
- LANDSCAPE MATERIAL SHALL BE WELL FORMED, VIGOROUS, GROWING SPECIMENS WITH GROWTH TYPICAL OF VARIETIES SPECIFIED AND SHALL BE FREE FROM DAMAGE, INSECTS AND DISEASES. MATERIAL SHALL EQUAL OR SURPASS #1 QUALITY AS DEFINED IN THE CURRENT ISSUE OF "AMERICAN STANDARD FOR NURSERY STOCK" AS PUBLISHED BY THE AMERICAN NURSERY & LANDSCAPE ASSOCIATION.
- ALL PLANT MATERIAL IS TO BE CAREFULLY HANDLED BY THE ROOT BALL, NOT THE TRUNK, BRANCHES AND/OR FOLIAGE OF THE PLANT. MISHANDLED PLANT MATERIAL MAY BE REJECTED BY THE LANDSCAPE ARCHITECT.
- ALL PLANT MATERIAL IS TO BE WELL ROOTED, NOT ROOT BOUND, SUCH THAT THE ROOT BALL REMAINS INTACT THROUGHOUT THE PLANTING PROCESS. DEFICIENT PLANT MATERIAL MAY BE REJECTED BY THE LANDSCAPE ARCHITECT OR OWNER.
- ALL PLANTS TO BE A MINIMUM OF WHAT IS SPECIFIED IN THE PLANT SCHEDULE. ANY CHANGES OR SUBSTITUTIONS SHALL BE APPROVED BY THE LANDSCAPE ARCHITECT AND GOVERNING JURISDICTION PRIOR TO ANY HOLE BEING DUG.
- CONTRACTOR TO COORDINATE WITH OWNER'S REPRESENTATIVE AND LANDSCAPE ARCHITECT TO ESTABLISH THE EXTENTS OF MULCH/SEED/SOD IF NOT SPECIFICALLY SHOWN ON PLANS.
- CONTRACTOR SHALL PROVIDE POSITIVE DRAINAGE IN ALL PLANTING AREAS.
- PROPOSED TREES TO BE PLANTED A MINIMUM 10 FEET FROM ANY LIGHT POLE AS MEASURED FROM TRUNK OF THE TREE TO THE POLE.
- PROPOSED TREES TO BE PLANTED A MINIMUM 5 FEET FROM ANY FIRE HYDRANT AS MEASURED FROM TRUNK OF THE TREE TO THE HYDRANT.
- CONTRACTOR SHALL COMPLETE SOIL TEST IN ALL PLANTING AREAS TO DETERMINE SOIL AMENDMENT REQUIREMENTS UNLESS WAIVED BY OWNER'S REPRESENTATIVE. CONTRACTOR SHALL ADJUST PH AND FERTILITY BASED UPON THE SOIL TEST RESULTS.
- TOPSOIL SHALL BE FREE OF MATERIAL LARGER THAN 1.0 INCH IN DIAMETER OR LENGTH AND SHALL NOT CONTAIN SLAG, CINDERS, STONES, LUMPS OF SOIL, STICKS, ROOTS, TRASH, OR OTHER EXTRANEOUS MATERIAL.
- LOOSEN SUBGRADE / SURFACE SOIL TO A MINIMUM DEPTH OF 6 INCHES. APPLY SOIL AMENDMENTS AND FERTILIZERS AS REQUIRED BY THE SOIL TEST RESULTS TO ACHIEVE A HEALTHY GROWING MEDIA AND MIX THOROUGHLY INTO TOP 4 INCHES OF SOIL. SPREAD PLANTING SOIL MIX TO A DEPTH OF 6 INCHES BUT NOT LESS THAN REQUIRED TO MEET FINISH GRADES AFTER NATURAL SETTLEMENT. DO NOT SPREAD IF PLANTING SOIL OR SUBGRADE IS FROZEN, MUDDY, OR EXCESSIVELY WET.
- IF IMPORTED TOPSOIL IS REQUIRED, THE SUBGRADE SHALL BE SCARIFIED OR TILLED TO A DEPTH OF AT LEAST 6 INCHES PRIOR TO INSTALLATION OF IMPORTED TOPSOIL. FOLLOWING INSTALLATION OF IMPORTED TOPSOIL, THE TOPSOIL SHALL BE TILLED TO INTEGRATE THE SOIL PROFILES.
- PLANT MATERIALS ARE TO BE GUARANTEED FOR A PERIOD OF 12 MONTHS. PLANT MATERIALS WHICH REMAIN UNHEALTHY WILL BE REPLACED BY THE LANDSCAPE CONTRACTOR BEFORE THE EXPIRATION OF THE GUARANTEE PERIOD OR IMMEDIATELY IF SO DIRECTED BY THE OWNER'S REPRESENTATIVE OR LANDSCAPE ARCHITECT.
- DO NOT PRUNE TREES AND SHRUBS BEFORE DELIVERY. PROTECT BARK, BRANCHES, AND ROOT SYSTEMS FROM SUN SCALD, DRYING, SWEATING, WHIPPING, AND OTHER HANDLING AND TYING DAMAGE. DO NOT BEND OR BIND-TIE TREES OR SHRUBS IN SUCH A MANNER AS TO DESTROY THEIR NATURAL SHAPE. PROVIDE PROTECTIVE COVERING OF EXTERIOR PLANTS DURING DELIVERY. DO NOT DROP EXTERIOR PLANTS DURING DELIVERY AND HANDLING.
- DELIVER EXTERIOR PLANTS AFTER PREPARATIONS FOR PLANTING HAVE BEEN COMPLETED AND INSTALL IMMEDIATELY. IMMEDIATELY AFTER UNLOADING, STAND THE TREES UP TO REDUCE THE RISK OF SUN SCALD. PROPERLY STAGED TREES ARE STANDING, UNITS ARE SPACED, UNLESS IMMEDIATELY INSTALLED, SET EXTERIOR PLANTS AND TREES IN SHADE, PROTECT FROM WEATHER AND MECHANICAL DAMAGE, AND KEEP ROOTS MOIST.
- SEE LANDSCAPE DETAILS FOR TREE STAKING REQUIREMENTS.
- EXCAVATE EDGES OF ALL PLANTING BEDS TO 2 INCH DEPTH TO FORM A NEAT AND CRISP DEFINITION.
- CONTRACTOR SHALL REMOVE DEBRIS AND FINE GRADE ALL PLANTING AREAS PRIOR TO INSTALLATION.
- REMOVE GUY WIRES AND STAKES AT END OF WARRANTY PERIOD OR ESTABLISHMENT.
- FINISH GRADING: GRADE PLANTING AREAS TO A SMOOTH, UNIFORM SURFACE PLANE WITH LOOSE, UNIFORMLY FINE TEXTURE. GRADE TO WITHIN PLUS OR MINUS 1/2 INCH OF FINISH ELEVATION. ROLL AND RAKE, REMOVE RIDGES, AND FILL DEPRESSIONS TO MEET FINISH GRADES. LIMIT FINISHED GRADING TO AREAS THAT CAN BE PLANTED IN THE IMMEDIATE FUTURE.



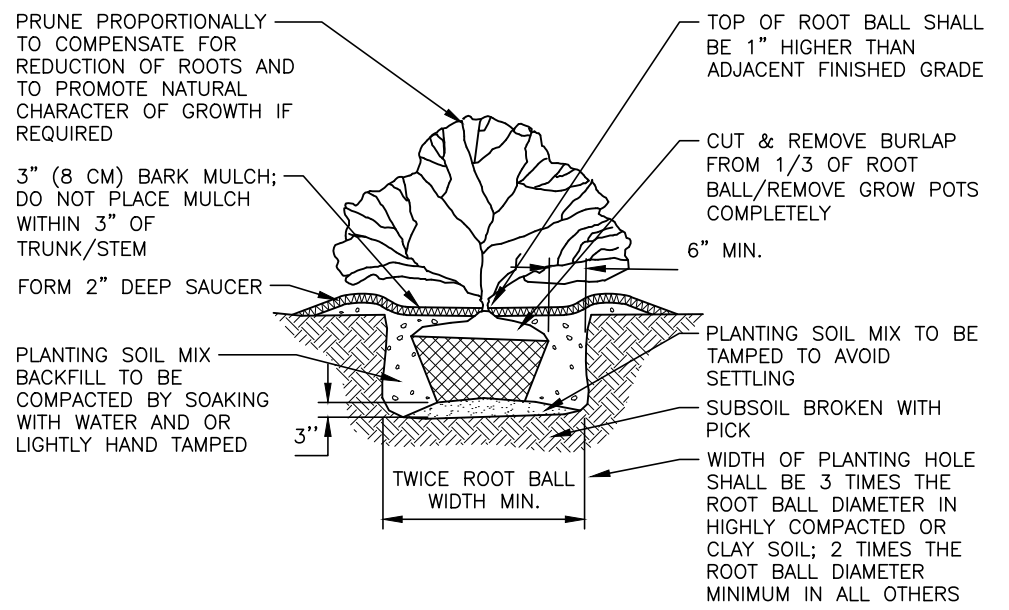
LANDSCAPING REQUIREMENTS:

LANDSCAPE STRIP WIDTHS REQUIRED:
FROM: 10'
SIDE: 5' (0' WHEN ADJACENT TO PRIVATE DRIVEWAY)
REAR: 40'

HIGHWAY 53 FRONTAGE 110 LF
TREES PROVIDED: 5 TREES (1 PER 25 LF)
TREES PROVIDED: 5 TREES
SHRUBS REQUIRED: 22 SHRUBS (1 PER 5 LF)
SHRUBS PROVIDED: 22 SHRUBS

SOUTHEAST SIDE LANDSCAPE STRIP (5' WIDTH) 170 LF
TREES REQUIRED: 0 TREES (1 PER 25 LF) (FOR BUFFERS 10' WIDE AND GREATER)
TREES PROVIDED: 0 TREES
SHRUBS REQUIRED: 0 SHRUBS (1 PER 5 LF)
SHRUBS PROVIDED: 0 SHRUBS

NORTHWEST SIDE LANDSCAPE STRIP (40' WIDTH) 110 LF
TREES REQUIRED: 2 ROWS OF TREES 6-8' APART
TREES PROVIDED: 2 ROWS OF TREES 6-8' APART
SHRUBS REQUIRED: 0 SHRUBS
SHRUBS PROVIDED: 0 SHRUBS

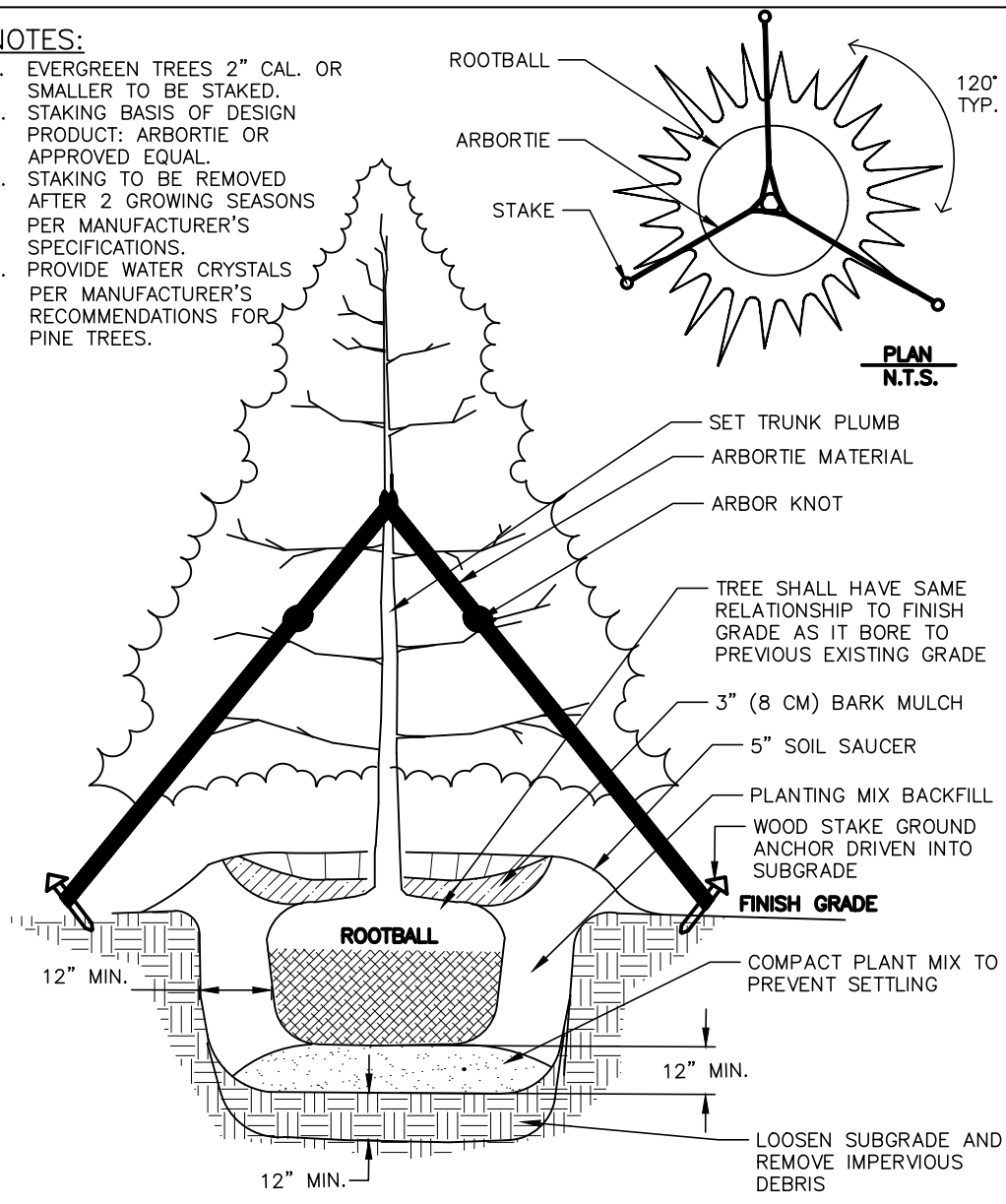


SHRUB INSTALLATION DETAIL

N.T.S.

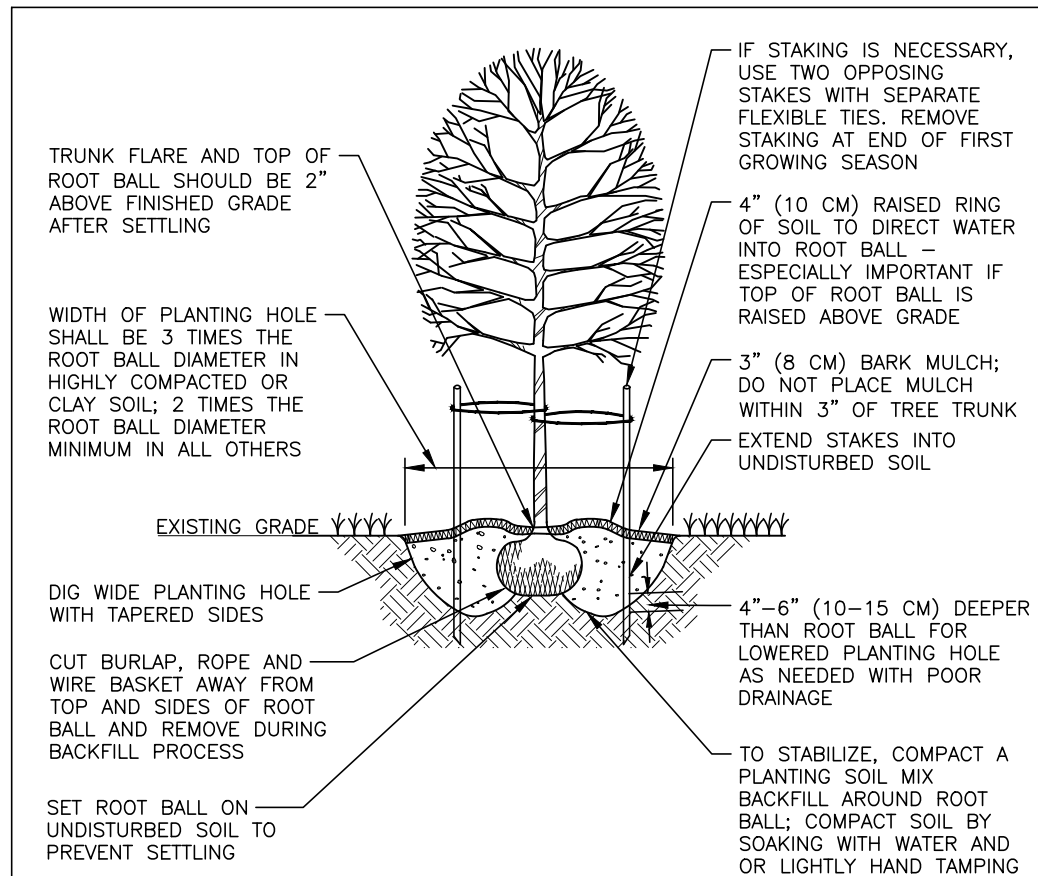
NOTES:

- EVERGREEN TREES 2" CAL. OR SMALLER TO BE STAKED
- STAKING BASIS OF DESIGN PRODUCT: ARBORITE OR APPROVED EQUAL
- STAKING TO BE REMOVED AFTER 2 GROWING SEASONS PER MANUFACTURER'S SPECIFICATIONS
- PROVIDE WATER CRYSTALS PER MANUFACTURER'S RECOMMENDATIONS FOR PINE TREES



EVERGREEN TREE PLANTING DETAIL

N.T.S.



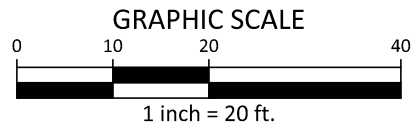
TREE INSTALLATION DETAIL

N.T.S.

- NOTES:
- SELECT TREES THAT HAVE: STRONG CENTRAL LEADER; CROWN WITH FULL FOLIAGE; ARE GROWN IN HEAVY CLAY SOIL WITH DRIP IRRIGATION
 - BEFORE INSTALLING PLANTING SOIL MIX BACKFILL AROUND ROOT BALL, BE SURE TO SOAK HOLE TO CONFIRM WATER FILTERS THROUGH UNDISTURBED SOIL. DESIGN ALTERNATIVE DRAINAGE SYSTEM IF REQUIRED.
 - A SOIL EXPERT CAN BE CONSULTED TO HELP MODIFY AND FERTILIZE TOPSOIL TO CREATE AN ACCEPTABLE PLANTING SOIL MIX FOR THE SITE CONDITIONS AND SPECIFIC TREE SPECIES.
 - IF USING CONTAINER GROWN TREES, USE FINGERS OR SMALL HAND TOOLS TO PULL ROOTS OUT OF THE OUTER LAYER OF POTTING SOIL; THEN CUT OR PULL APART ANY ROOTS CIRCLING THE PERIMETER OF THE CONTAINER.
 - THOROUGHLY SOAK THE TREE ROOT BALL AND ADJACENT PREPARED SOIL SEVERAL TIMES DURING THE FIRST MONTH AFTER PLANTING AND DURING DRY PERIODS.



ALL CONSTRUCTION SHALL BE IN ACCORDANCE WITH THE CURRENT DAWSON COUNTY ENGINEERING DESIGN AND CONSTRUCTION STANDARDS



PRELIMINARY DRAWING - NOT RELEASED FOR CONSTRUCTION

McADAMS
The John R. McAdams Company, Inc.
2905 Meridian Parkway
Durham, NC 27713
phone 919. 361. 5000
fax 919. 361. 2269
GA license number: PEF007872
www.mcadamsco.com

CLIENT

N3 REAL ESTATE
1240 N KIMBALL AVE
SOUTHLAKE, TX
PHONE: 817.348.8748



**STRICKLAND BROTHERS OIL
CHANGE - DAWSONVILLE**
SITE PLAN SUBMITTAL
HIGHWAY 53, NORTHWEST OF ITS
INTERSECTION WITH CENTER LANE
DAWSONVILLE, GA 30534



REVISIONS

NO.	DATE	DESCRIPTION
1	-	-
2	-	-
3	-	-
4	-	-
5	-	-
6	-	-

PLAN INFORMATION

PROJECT NO. NTR21002
FILENAME NTR21002X-LANDSCAPE
CHECKED BY LAM
DRAWN BY AP
SCALE 1" = 20'
DATE 12.15.2021

SHEET

LANDSCAPE PLAN

L5.00